



Lanehead Walk | Etching Hill, Rugeley | WS15 2XD

Offers In The Region Of £200,000



Summary

**** NO CHAIN ** POPULAR LOCATION ** OUTSTANDING POTENTIAL ** THREE BEDROOMS ** SHOWER ROOM ** LOUNGE ** KITCHEN DINER ** FRONT & REAR GARDENS ** DRIVEWAY ** CAR PORT ****

WEBBS ESTATE AGENTS are pleased to offer with NO UPWARD CHAIN, this three-bedroom family home is ideally suited for first-time buyers and young families. It is perfect for anyone wanting to put their mark on a property. Lanehead Walk is conveniently situated close to local amenities, reputable schools, and excellent transport links. The property is also within easy reach of the beautiful Cannock Chase, providing a perfect blend of convenience and natural beauty. Briefly comprising: Lounge, Kitchen Diner, First Floor Landing, Three Bedrooms and Shower Room. Externally, there are Gardens to front and rear Driveway Covered Carport.

Key Features

- NO UPWARD CHAIN
- IDEAL FOR FIRST TIME BUYERS
- LOUNGE
- OFF ROAD PARKING
- POPULAR LOCATION
- THREE BEDROOMS
- KITCHEN DINER
- VIEWING ADVISED

Rooms and Dimensions

ENTRANCE HALLWAY

LOUNGE

14'9" x 13'7" (4.52m x 4.15m)

KITCHEN DINER

9'10" x 14'9" (3.00m x 4.50m)

LANDING

BEDROOM ONE

10'11" x 8'9" (3.35m x 2.69m)

BEDROOM TWO

10'10" x 8'4" (3.30m x 2.54m)

BEDROOM THREE

6'5" x 5'8" (1.96m x 1.73m)

SHOWER ROOM

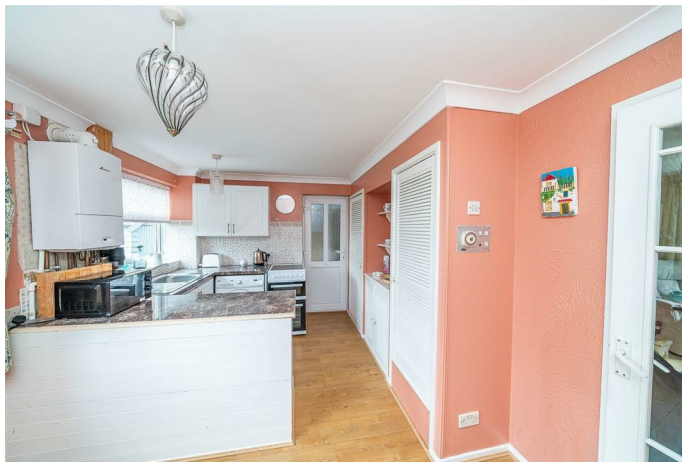
FRONT & REAR GARDENS

CAR PORT

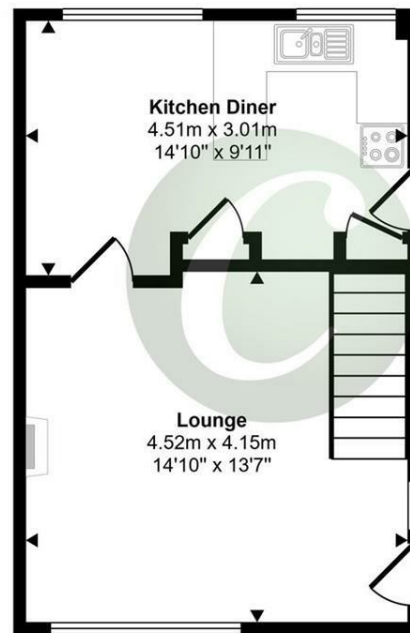
DRIVEWAY

Identification Checks (R)

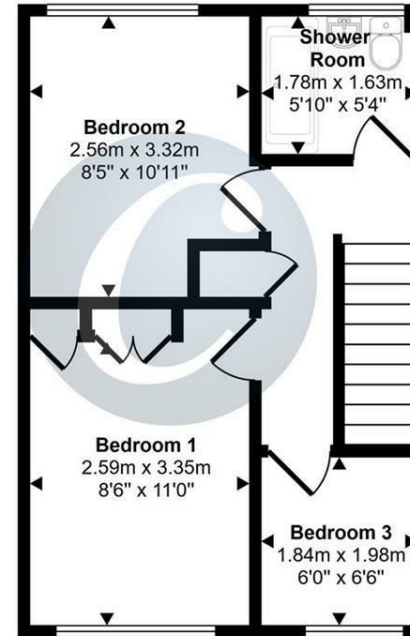




Approx Gross Internal Area
65 sq m / 698 sq ft



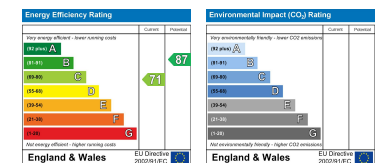
Ground Floor
Approx 32 sq m / 346 sq ft



First Floor
Approx 33 sq m / 352 sq ft

This floorplan is only for illustrative purposes and is not to scale. Measurements of rooms, doors, windows, and any items are approximate and no responsibility is taken for any error, omission or mis-statement. Icons of items such as bathroom suites are representations only and may not look like the real items. Made with Made Snappy 360.

Webbs Estate Agents - endeavour to maintain accurate depictions of properties in Virtual Tours, Floor Plans and descriptions, however, these are intended only as a guide and purchasers must satisfy themselves by personal inspection.



Globe House Upper Brook Street, Rugeley, Staffordshire, WS15 2DN

Tel: 01889 583377 | Email: rugeley@webbsea.co.uk | www.webbestateagents.co.uk

Webbs
estate agents