



Tremadoc Road, SW4

£2,800 Per calendar month

Recently refurbished throughout and set on the first floor. This attractive property offers an open plan reception room with a stylish kitchen, a modern bathroom with underfloor heating, two double bedrooms with built-in storage and double glazing throughout.

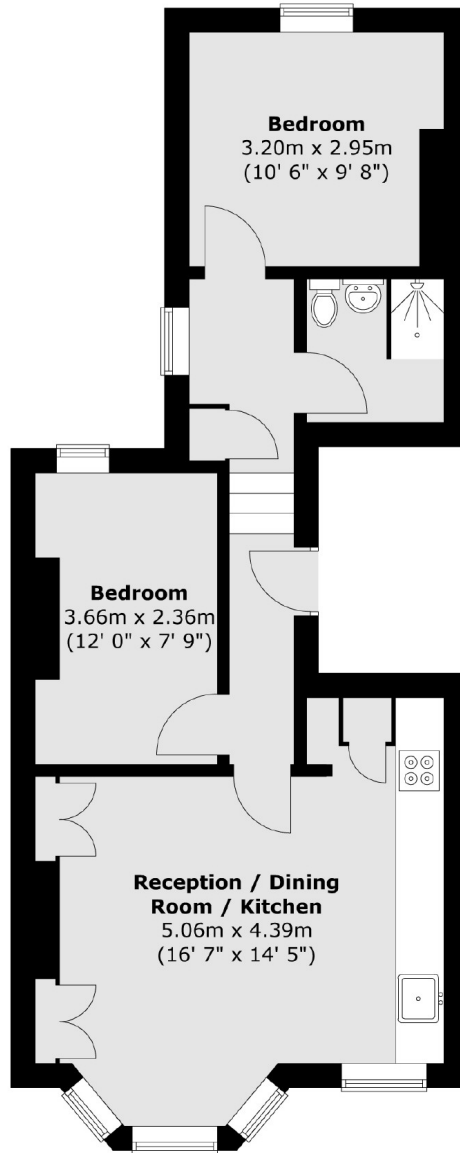
Tremadoc Road has always been a firm favourite of young professionals, as it has easy access to the bars, restaurants and shops of Clapham High Street, along with Clapham Common and both overground and underground links nearby.

Features

- Two Double Bedrooms
- Recently Refurbished
- Modern Reception Room
- Open Plan Kitchen
- Underfloor Heating
- Ideal Location

Tremadoc Road, London, SW4

First Floor



Total area (approx.) : 51 sq. m (549 sq. ft)