

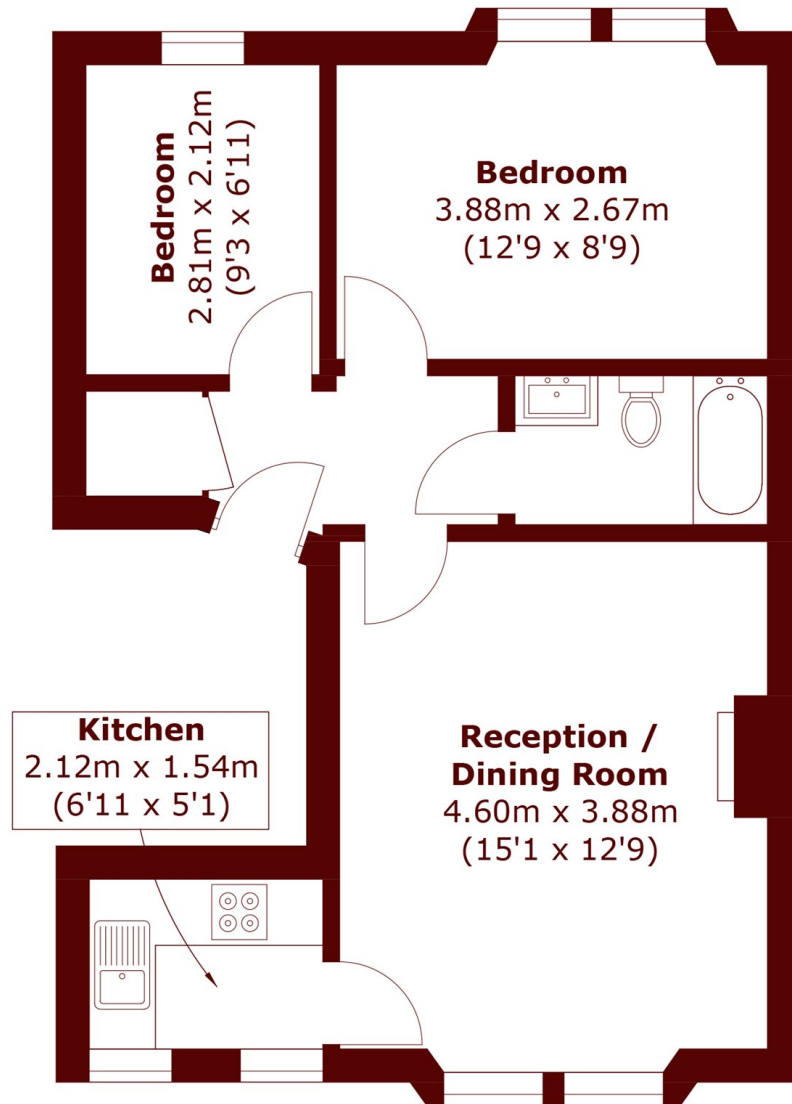


## Mornington Avenue, W14

£499,950



- Two Bedrooms
- Open Plan Living
- No Onwards Chain
- Second Floor
- Red Brick Building
- Quiet Location



Total area (approx.): 48.3 sq. m (519.9 sq. ft)

**Marsh & Parsons Brook Green**

107-109 Shepherds Bush  
Road, London, W6 7LP  
020 7605 7765