

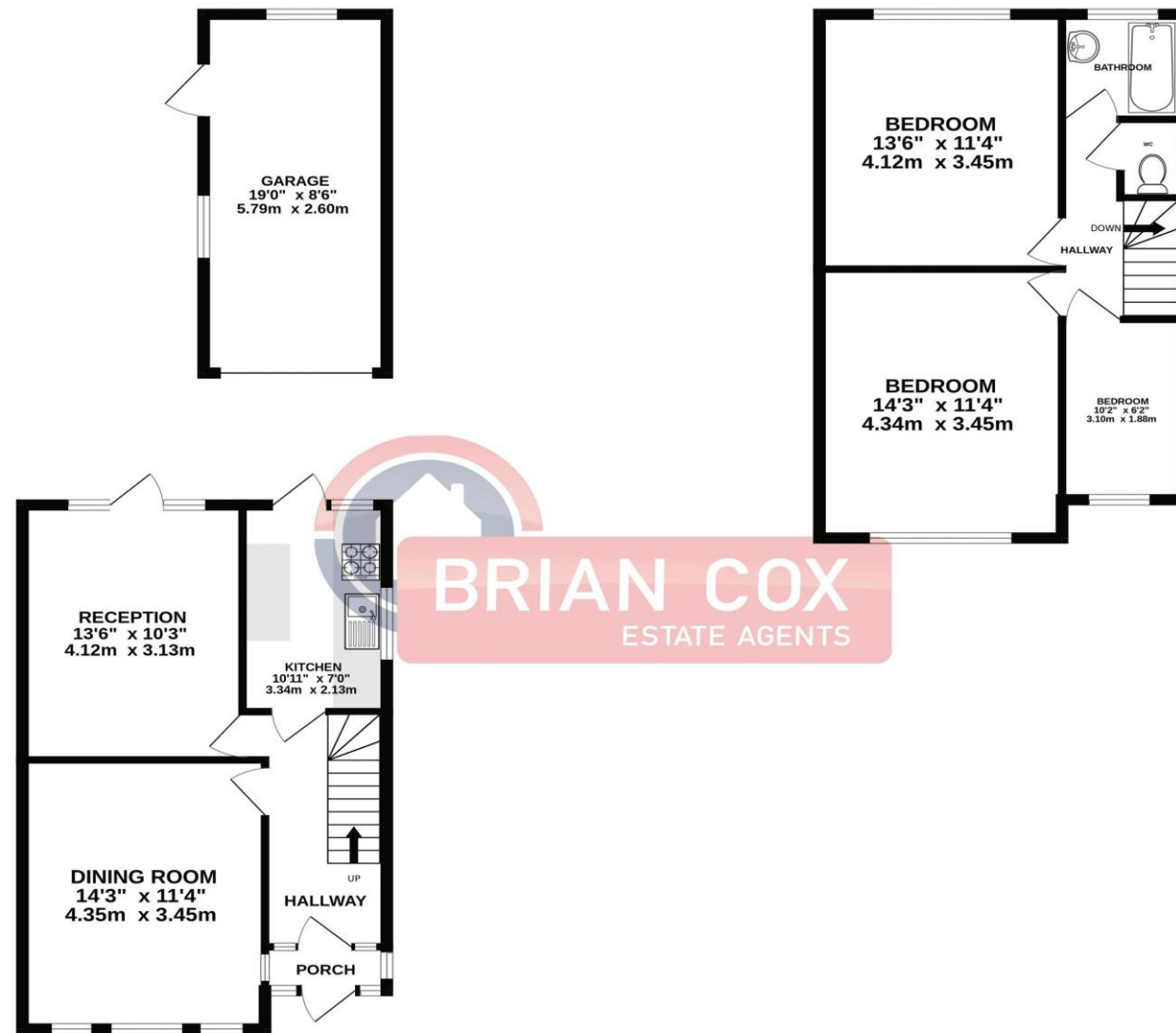
# the floorplan...



0208 578 1004  
brian-cox.co.uk

GROUND FLOOR  
622 sq.ft. (57.8 sq.m.) approx.

1ST FLOOR  
460 sq.ft. (42.7 sq.m.) approx.



TOTAL FLOOR AREA : 1082 sq.ft. (100.6 sq.m.) approx.

Whilst every attempt has been made to ensure the accuracy of the floorplan contained here, measurements of doors, windows, rooms and any other items are approximate and no responsibility is taken for any error, omission or mis-statement. This plan is for illustrative purposes only and should be used as such by any prospective purchaser. The services, systems and appliances shown have not been tested and no guarantee as to their operability or efficiency can be given.  
Made with Metropix ©2026



THREE BEDROOM - SEMI-DETACHED - FRONT AND REAR GARDENS - GARAGE - CHAIN FREE. Brian Cox and Company are delighted to bring to the market this three-bedroom semi-detached family home in Greenford. The property briefly comprises an entrance hall, two reception rooms, fitted kitchen, three good sized bedrooms and a family bathroom with separate w/c. Further benefits include a garage via shared driver, front and rear gardens, potential to extend (stpp), double glazing, gas central heating and is being offered with no onward chain. Call now to arrange your chance to view and avoid disappointment!!



## more details from...

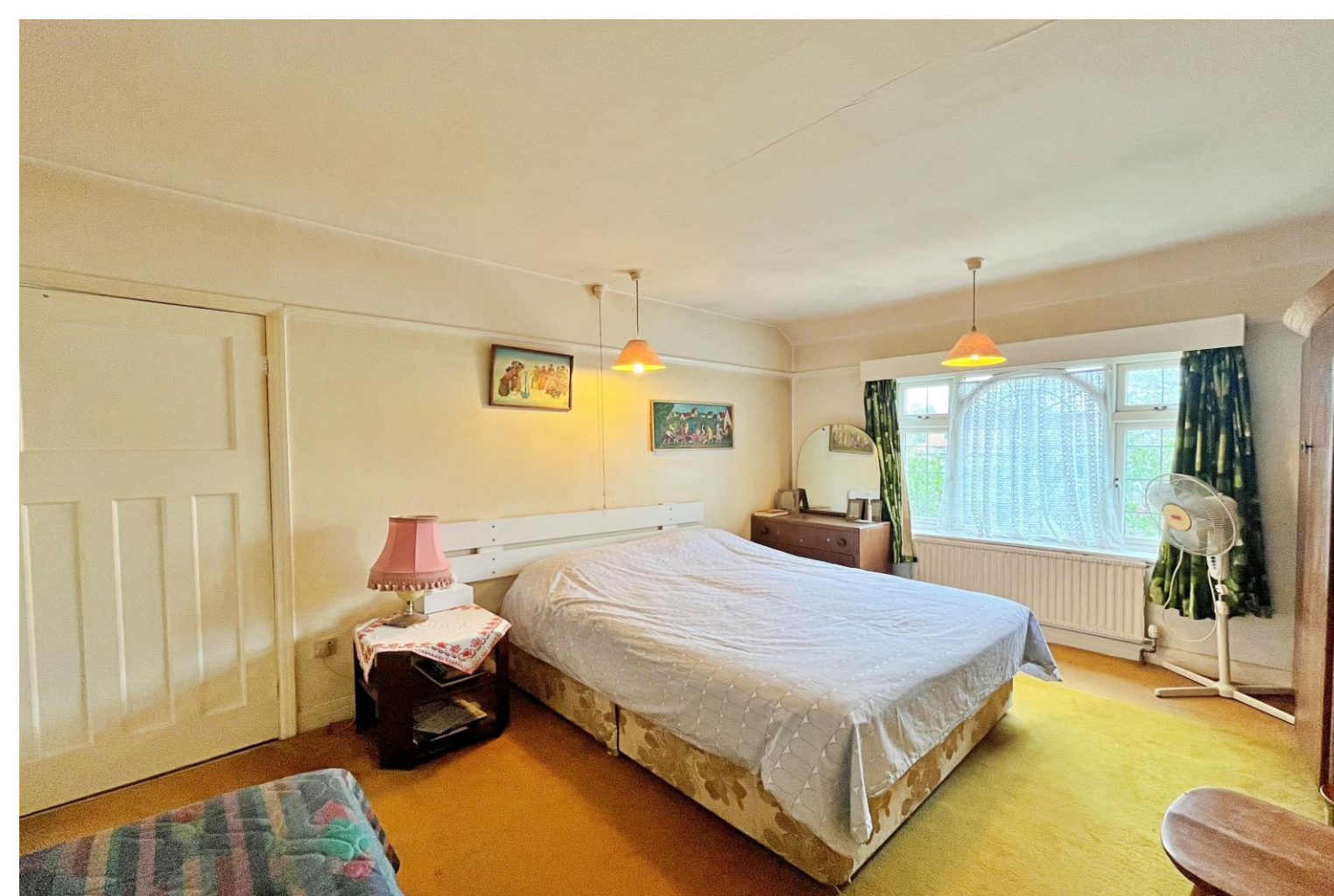
call: **Brian Cox Greenford: 0208 578 1004**  
email: [emma-gerald@brian-cox.co.uk](mailto:emma-gerald@brian-cox.co.uk)  
web: [www.brian-cox.co.uk](http://www.brian-cox.co.uk)



Offers in the Region Of  
**£540,000**

Hicks Avenue, Greenford UB6 8EX

Consumer Protection from Unfair Trading Regulations 2008 We have not tested any apparatus, equipment, fixtures, fittings or services and so cannot verify that they are in working order or fit for purpose. You are advised to obtain verification from your solicitor or surveyor. References to the tenure of a property are based on information supplied by the seller. We have not had sight of the title documents and a buyer is advised to obtain verification from their solicitor. Items shown in photographs are not included unless specifically mentioned within the sales particulars, but may be available by separate negotiation. We advise you to book an appointment to view before embarking on any journey to see a property, and check its availability.



## in brief...

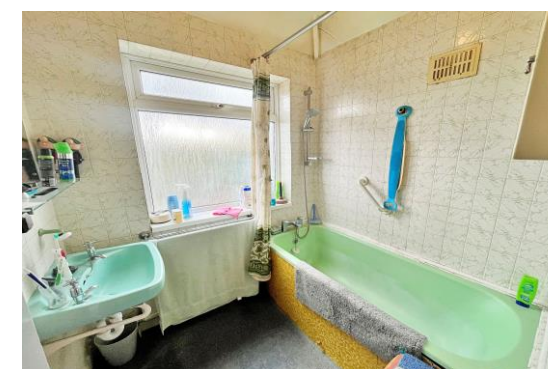
- Three Bedroom
- Semi-Detached
- Chain Free
- Potential to Extend (STPP)
- Front and Rear Gardens
- Garage



## the location...

### nearest stations ...

South Greenford Station (0.3 miles)  
Greenford Station (0.8 miles)  
Perivale Station (1.1 miles)



Greenford is a large suburb in the London Borough of Ealing in West London, UK. It was an ancient parish in the historic county of Middlesex.

There are several local primary schools in the area which include Coston Primary School, Oldfield Primary School, Edward Betham CofE Primary School and Selborne Primary School.

If you have older children there are also local secondary schools nearby, some of these include William Perkin Church of England High School, Brentside High School and The Cardinal Wiseman Catholic School.

