



Guide Price
£500,000

Freehold

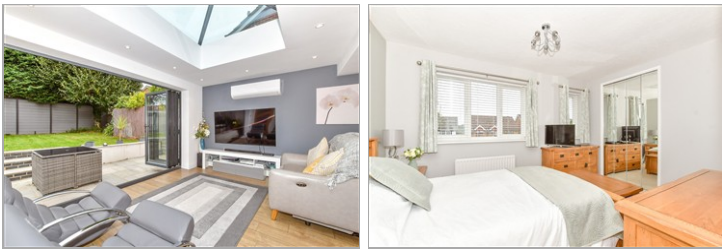
4x  2x  2x 

**Harrier Close,
Waterlooville,
Hampshire, PO8**

OVER 60?

Secure this property
for up to **59% less!**

cubitt & west
Helping you move forwards



Main features

- Beautiful open plan kitchen/dining area with bi-fold doors
- Immaculate finish throughout
- Air conditioning
- Sought-after Horndean location
- Close to local amenities and travel links

Accommodation

GROUND FLOOR

- Entrance Hall
- Cloakroom
- Lounge: 16'3 x 13'1 (4.96m x 3.99m)
- Kitchen/Dining/Family Area: 20'3 x 18'6 (6.18m x 5.64m)
- Utility Room: 6'4 x 5'7 (1.93m x 1.70m)

FIRST FLOOR

- Landing
- Bedroom 1: 13'1 x 9'9 (3.99m x 2.97m)
- En-Suite Shower Room
- Bedroom 2: 9'5 x 9'3 (2.87m x 2.82m)
- Bedroom 3: 9'1 x 7'10 (2.77m x 2.39m)
- Bedroom 4: 7'3 x 7'3 (2.21m x 2.21m)
- Bathroom

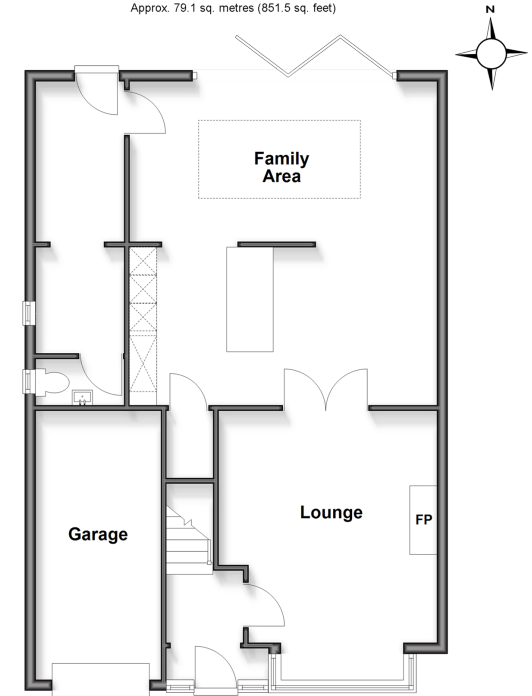
OUTSIDE

- Rear Garden
- Garage and Off Road Parking

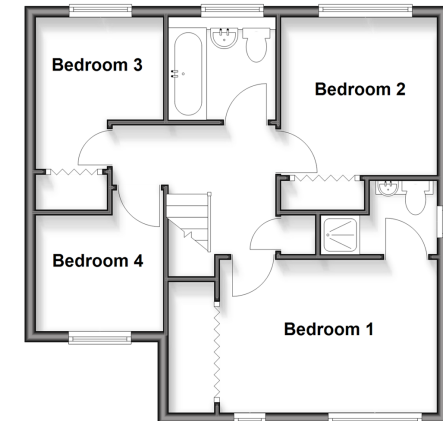
Call Waterloo - 02392 267244 ■ cubittandwest.co.uk

- Legal advice should be taken to verify fixtures/fittings, planning, alterations and/or lease details
- Appliances & services are untested, dimensions are approximate and floor plans are not to scale
- Through a Homewise Home For Life Plan people aged 60+ can secure this property for up to 59% less, by purchasing a Lifetime Lease

Ground Floor
Approx. 79.1 sq. metres (851.5 sq. feet)



First Floor
Approx. 49.6 sq. metres (533.4 sq. feet)



42410902/20260203/EH/EC