



# Quattuor

Four bedroom home | Plot 2

*Contemporary elegance across three beautifully designed light-filled levels*

*Bath stone contrast with the dark timber effect gable surrounds and slate roofing*

*Bright living space with concealed pocket doors to kitchen/diner and bi-fold doors to rear garden*

*Beautiful countryside views over the River Avon valley from the first floor bedroom balcony*

*Solar panels, 5.2kW battery storage and EV charger*

*Efficient air source heat pump plus triple glazing for excellent thermal and acoustic insulation*

1,971 sq ft

Quattuor is an elegantly crafted home, marrying contemporary, adaptable design with premium living.

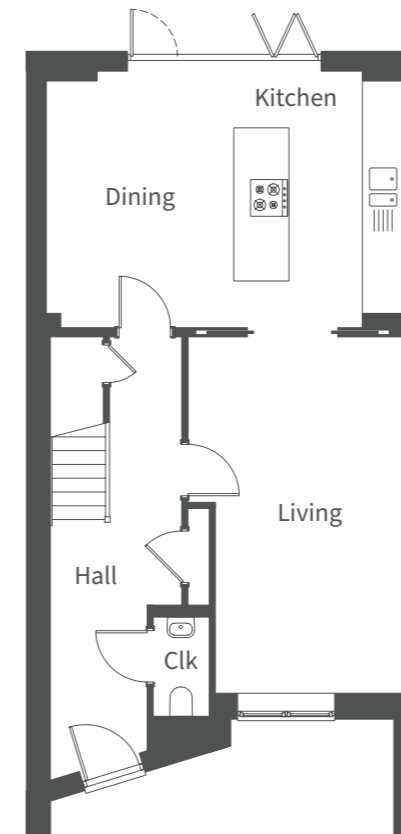
Externally the light textured Bath stone and timber-style finish contrasts with dark framed glazing, and sharp, geometric forms defining a bold, contemporary aesthetic.

The entrance hall with understair storage and cloakroom leads to the spacious kitchen and dining area, with a central island, quality worktops, and integrated appliances. Bi-folds open onto the rear garden. The relaxed, bright living room is linked to the kitchen by concealed sliding doors.

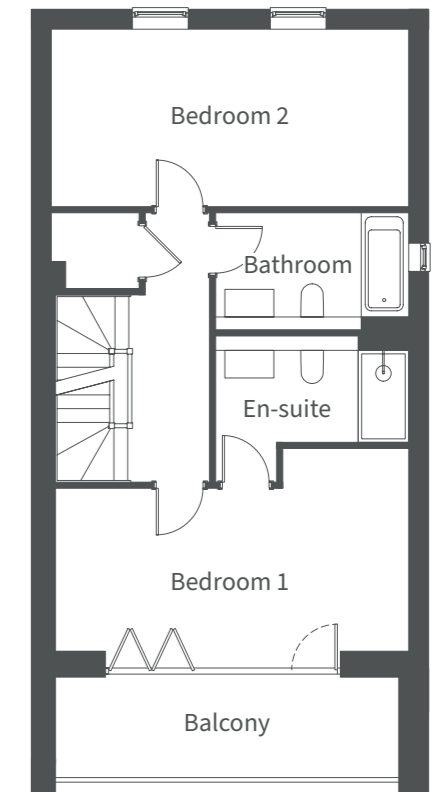
The first floor hosts a main bedroom and en-suite, a second bedroom and bathroom plus storage. Two further bedrooms, a modern shower room and additional storage complete the second floor. Roof lights further enhance the bright, welcoming atmosphere.

Quattuor is designed for refined riverside living, balancing comfort, style, and practicality. Three parking spaces are also provided, with an EV charger conveniently located under the first floor balcony area.

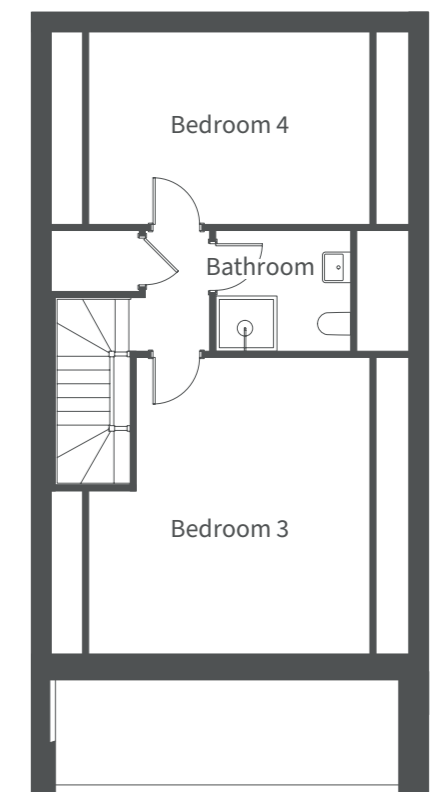
NOTE: Plot 2 is featured in the centre of the above CGI



Ground Floor	Millimetres	Feet / inches
Living	5815 x 3500	19'1" x 11'6"
Kitchen / Dining	5810 x 4160	19'1" x 13'8"



First Floor	Millimetres	Feet / inches
Bedroom 1	5810 x 3305	19'1" x 10'10"
En-suite	3125 x 2145	10'3" x 7'0"
Bedroom 2	3810 x 2870	12'6" x 9'5"
Bathroom	3215 x 1700	10'7" x 5'7"



Second Floor	Millimetres	Feet / inches
Bedroom 3	4915 x 4565	16'2" x 14'12"
Bedroom 4	4565 x 3150	14'12" x 10'4"
Shower room	2200 x 1955	7'3" x 6'5"

NOTE: Other floor plans and elevations for each property are available. Sizes are maximums. As each house is built individually, dimensions shown may vary +/- 50mm and the internal finishes may not always be the same. External finishes, materials, landscaping, positions and colours of windows and garages (where applicable) may also vary. Properties can also be constructed as mirror images of that shown. Please ask if you require further details or clarification.