

## Ron Leighton Way, E6

£325,000

Set within the sought after Cornwell House development, this stylish one bedroom apartment offers modern living with a west-facing open plan reception room and kitchen leading onto a private balcony.

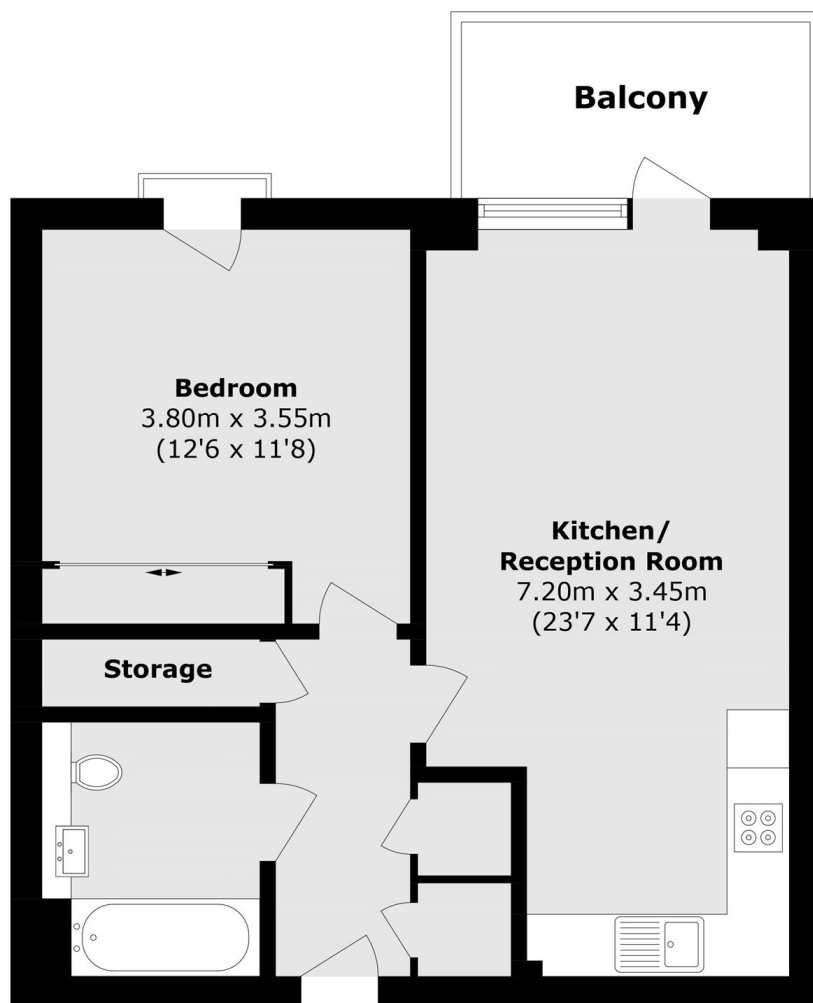
The property features a spacious double bedroom, a contemporary bathroom, excellent energy efficiency and the remainder of the NHBC warranty.

Cornwell House is conveniently located close to East Ham station, providing access to the District and Hammersmith and City lines. A wide selection of shops, cafés, restaurants and local amenities are also nearby.

### Features

- Spacious Double Bedroom
- Private West-Facing Balcony
- Natural Sunlight
- Open Plan Kitchen
- Ample Storage
- Modern Build

# Ron Leighton Way, London, E6



Total area (approx.): 51.8 sq. m (557.5 sq. ft)

Balcony Total (approx.): 5.7 sq. m (61.3 sq. ft)