



MISTORIA
ESTATE AGENTS

hydro.



Bridgewater Road

£450 PCM

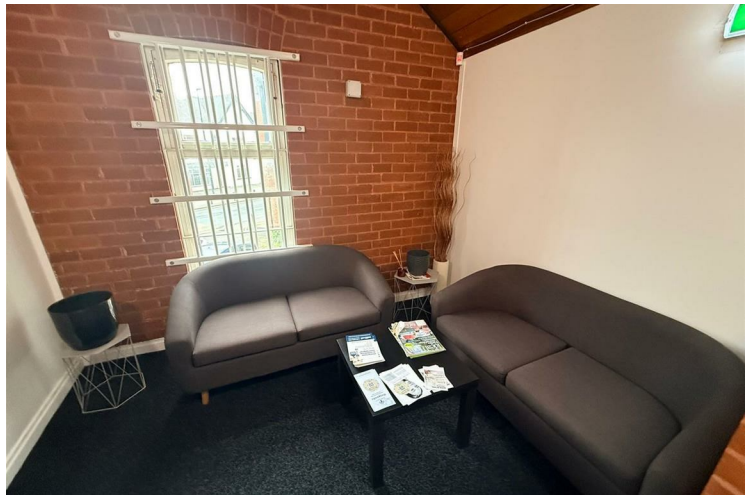
Manchester

Located on Bridgewater Road in the lively area of Walkden, this contemporary office space offers an ideal setting for businesses seeking a professional and well-connected environment. The property features a welcoming reception area, perfect for greeting clients and holding meetings, along with two generously sized rooms that can be used as private offices or flexible workspaces.

Tenants also benefit from access to a communal kitchen, providing a convenient space for breaks and informal collaboration. Situated close to a range of local amenities, the location supports both convenience and accessibility for staff and visitors alike.


With all bills included, this office space offers a straightforward, hassle-free solution for businesses looking to manage costs efficiently while operating in a modern and supportive setting.









Energy Efficiency Rating		
	Current	Potential
<i>Very energy efficient - lower running costs</i>		
(92 plus) A		
(81-91) B		
(69-80) C		
(55-68) D	62	62
(39-54) E		
(21-38) F		
(1-20) G		
<i>Not energy efficient - higher running costs</i>		
England & Wales	EU Directive 2002/91/EC 	

Agents Note: Whilst every care has been taken to prepare these particulars, they are for guidance purposes only. All measurements are approximate and are for general guidance purposes only and whilst every care has been taken to ensure their accuracy, they should not be relied upon and potential buyers/tenants are advised to recheck the measurements

Bolton Mistoria
108-110 Deansgate
Bolton
BL1 1BD

01204 800766
info@mistoria.co.uk
mistoria.co.uk

