



9

Greenfield Way, Garelochhead, Helensburgh, Argyll And Bute. G84 0BN





9

Greenfield Way, Garelochhead, Helensburgh, Argyll And Bute. G84 0BN



Located within an elevated position within the picturesque village of Garelochhead, 9 Greenfield Way is a superb, beautifully presented three-bedroom mid-terrace villa offering around 900 square feet of living space.

The property has been extensively upgraded internally and has lovely easily maintained private front and rear gardens. The upper level enjoys views over the village with the Gareloch in the distance. On entering there is a welcoming hallway which has a useful utility room. The lounge is a superb size with dual aspects and plenty of space for a dining table and chairs. A door from the lounge leads to the beautiful kitchen which has recently been re-fitted and has a range of integral appliances and a courtesy door accessing the rear garden.

Upstairs the property has three spacious bedrooms, two excellent sized doubles and the third is a large single. One of the bedrooms has built-in wardrobes and there is a modern shower room. The property is double glazed throughout and has gas central heating.

Externally 9 Greenfield Way has private front and rear gardens which have been designed with ease of maintenance in mind. The rear garden also has the addition of a large outbuilding currently utilised as a home gym/bar area. On-street parking is available a short walk from the property.

EPC Band C
Council Tax Band C



9

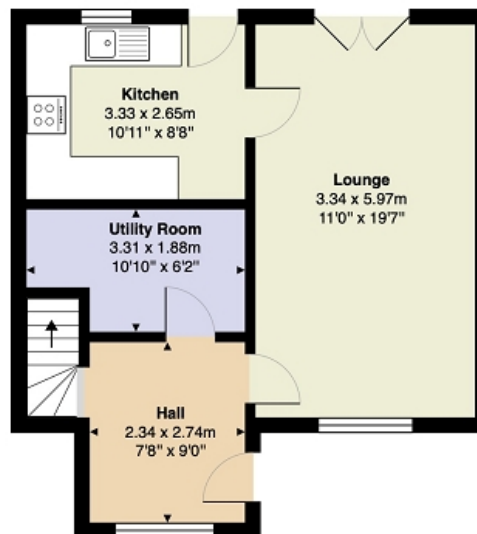
Greenfield Way, Garelochhead, Helensburgh, Argyll And Bute. G84 0BN



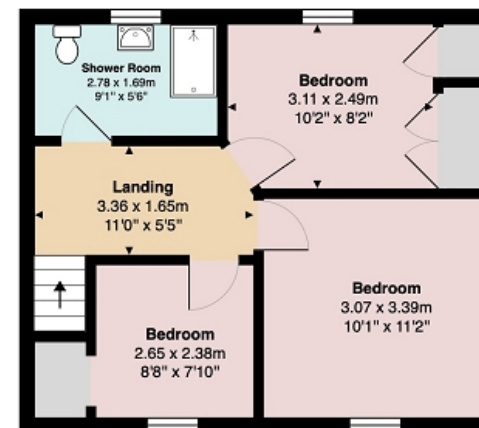


Measurements

Hallway	9' 0" x 7' 08" or 2.74m x 2.34m
Utility Room	10' 10" Max x 6' 02" Max or 3.30m Max x 1.88m Max
Lounge	19' 07" x 11' 0" or 5.97m x 3.35m
Kitchen	10' 11" x 8' 08" or 3.33m x 2.64m
Landing	11' 0" Max x 5' 05" Max or 3.35m Max x 1.65m Max
Bedroom 1	11' 02" x 10' 01" or 3.40m x 3.07m
Bedroom 2	10' 02" Max x 8' 02" Max or 3.10m Max x 2.49m Max
Bedroom 3	8' 08" x 7' 10" or 2.64m x 2.39m
Shower Room	9' 01" x 5' 06" or 2.77m x 1.68m



Ground Floor



First Floor

All measurements are approximate and for display purposes only

Contact our office for further details



rightmove
find your happy

NOTE: These details have been prepared for guidance. If there is any point which you find misleading please contact McArthur Stanton where further information is available. Measurements have been taken from wall to wall, unless otherwise stated, and have been recorded by use of a sonic beam. Services and appliances not tested. Details have been prepared by April 2026. If required, we can arrange for a property market appraisal to be carried out on your existing property.

9

Greenfield Way, Garelochhead, Helensburgh, Argyll And Bute. G84 0BN

