



Nine Elms Lane  
London, SW8

CHESTERTONS





Step into luxury living with this stunning upper floor apartment boasting over 690 Sq. Ft. of space. This brand-new modern property features two bedrooms, a stunning open plan reception room and modern kitchen with integrated appliances and space for dining, a winter garden and two luxurious bathrooms, offering a sophisticated yet comfortable living experience. The apartment is beautifully designed with high-end finishes and stylish decor throughout.

Located on Nine Elms Lane, near Larkhall Park and close to the new Battersea Power Station development, Battersea Park and the river. The development enjoys an on-site porter.

- Brand new seventh floor apartment
- Beautifully designed with high-end finishes and stylish decor throughout
- Stunning open plan reception room and fully integrated kitchen
- Two double bedrooms

**£7,085 pcm**

Additional tenant charges apply (fees apply to non-AST tenancies only)

Tenancy Agreement Fee: £300

References per Tenant/Guarantor: £60

Inventory check (approx. £100 – £250 inc. VAT)

[chestertons.co.uk/property-to-rent/applicable-fees](http://chestertons.co.uk/property-to-rent/applicable-fees)

Energy Efficiency Rating		Current	Potential
100-109	A		
81-100	B	83	83
69-80	C		
55-68	D		
39-54	E		
21-38	F		
1-20	G		

Not energy efficient - higher running costs

England, Scotland & Wales EU Directive 2002/91/EC

**Minimum Term:** 6 months  
**Deposit Required:** £9,810.00  
**Local Authority:** London Borough of Wandsworth  
**Council Tax Band:** F  
**EPC Rating:** B  
**Furnished, Part Furnished, Unfurnished**

**Chestertons Battersea Park & Nine Elms Lettings**

62-64 Battersea Bridge Road

London

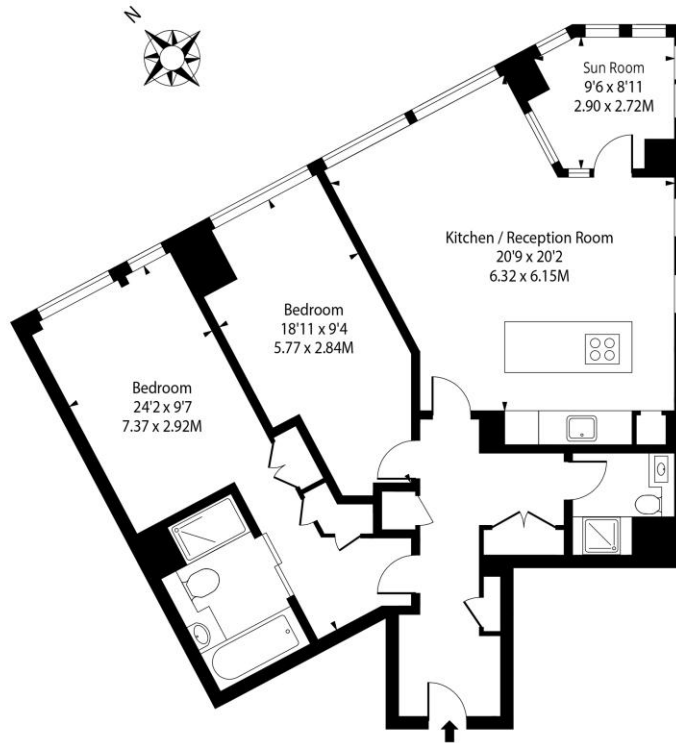
SW11 3AG

[batterseapark@chestertons.co.uk](mailto:batterseapark@chestertons.co.uk)

02030408269

[chestertons.co.uk](http://chestertons.co.uk)

## River Park Tower, SW8



Seventh Floor

Approx Gross Internal Area **964 Sq Ft - 89.5 Sq M**

Drawn in accordance with IPMS 3B: Residential

For Illustration Purposes Only - Not to Scale

Ref: No. 50386

