

BRENNAN

BESPOKE



£220,000

Denton Court

Burton Latimer, NN15 5SZ

A fantastic opportunity to secure a well-proportioned three-bedroom CHAIN FREE home on Denton Court, right in the heart of Burton Latimer. With parking to the rear, a private garage, and a low-maintenance garden, this property is perfect for first-time buyers, young families, or anyone seeking a smart move in a popular residential area. Step inside to a welcoming hallway, leading to the lounge, ideal for relaxing or entertaining. The modern kitchen offers ample workspace and direct access to the rear garden, making it perfect for summer dining or play. Upstairs, you'll find two comfortable double bedrooms and a versatile single, plus a stylish family bathroom and handy storage. Enjoy the benefit of a private garage and additional parking to the rear. The low-maintenance garden provides just the right amount of outdoor space without the upkeep with a fantastic seating area to soak up the sun. Denton Court is a peaceful cul-de-sac in the heart of Burton Latimer, offering easy access to shops, schools, parks, and commuter routes, making everyday life a breeze.

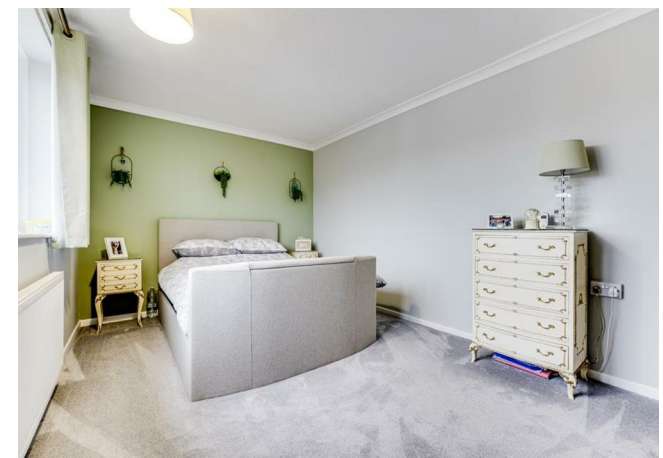
3



1



1







Ground Floor

First Floor

Internal Area Approx. : 71m²

For identification only not to scale

BRENNAN
BESPOKE

OFFICE ADDRESS
BRENNAN BESPOKE
2 The Tithe Barn Glendon Lodge Farm
Glendon
Kettering
Northamptonshire
NN14 1QF

OFFICE DETAILS
01536 904400
info@brennanbespoke.co.uk
<https://www.brennanbespoke.co.uk>

LOCAL AUTHORITY
North Northamptonshire

TENURE
Freehold

COUNCIL TAX BAND
B

VIEWINGS
By prior appointment only

Energy Efficiency Rating		
	Current	Potential
<i>Very energy efficient - lower running costs</i>		
(92 plus) A		
(81-91) B		
(69-80) C	71	77
(55-68) D		
(39-54) E		
(21-38) F		
(1-20) G		
<i>Not energy efficient - higher running costs</i>		
England & Wales	EU Directive 2002/91/EC	

Agents Note: Whilst every care has been taken to prepare these particulars, they are for guidance purposes only. All measurements are approximate and are for general guidance purposes only and whilst every care has been taken to ensure their accuracy, they should not be relied upon and potential buyers/tenants are advised to recheck the measurements