

16 Tomblin Mews, London

OIEO £600,000 Freehold



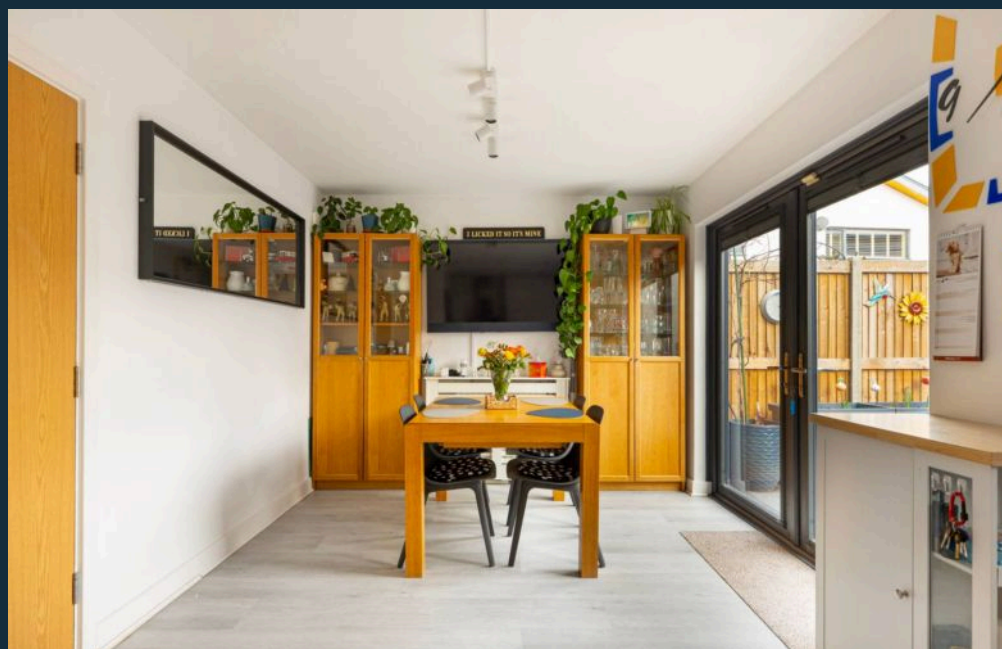
haboodle

Rowan Park Living at Its Best – Four Bedrooms, Two En-Suites & Parking for Two Cars

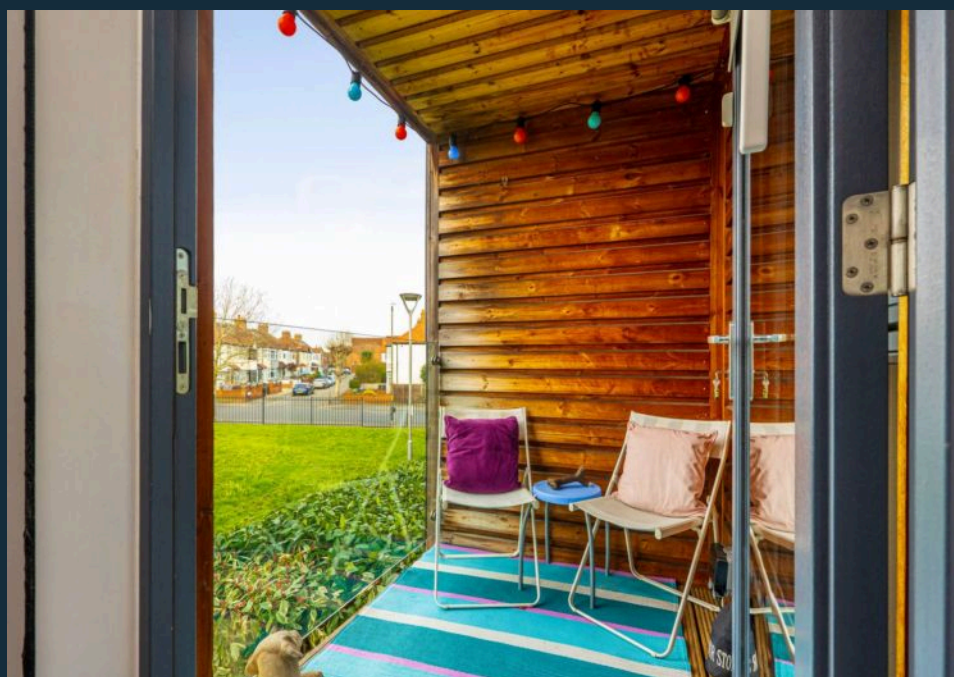
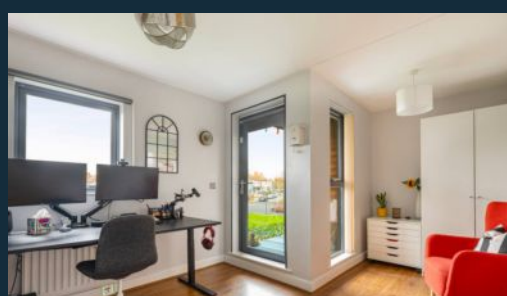
Set within the highly regarded Rowan Park development in the heart of Streatham Vale, this beautifully presented four-bedroom home offers something genuinely special; space, practicality and a true sense of community.

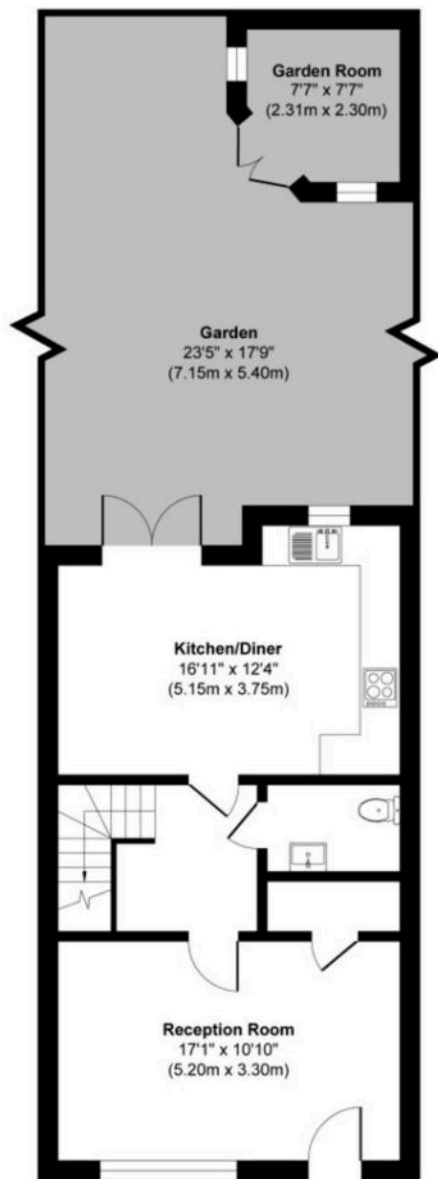
Rowan Park is known locally for its landscaped green spaces, tranquil ponds and neighbourly feel. It's the sort of place where families walk their dogs, children play in the open spaces, and people stop to say good morning. Peaceful, tucked away, yet incredibly well connected, it's easy to see why homes here are so well regarded.

The property itself stands out. Arranged over three floors, the layout is both generous and practical. The ground floor offers a bright, welcoming living space ideal for everyday family life and entertaining, along with a well-appointed kitchen and the all-important downstairs WC

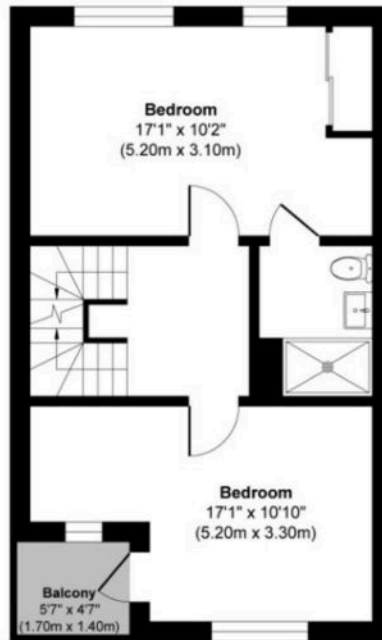


- › Four Double Bedrooms
- › Two En-Suite Bathrooms
- › Large Family Bathroom
- › Downstairs WC
- › Off-Street Parking For Two Cars + Electric Car Charger
- › Private Outdoor Space
- › Landscaped Green Spaces & Ponds
- › Excellent Transport Links & Schools
- › Private Sought-After Rowan Park Development
- › EPC Rating - B

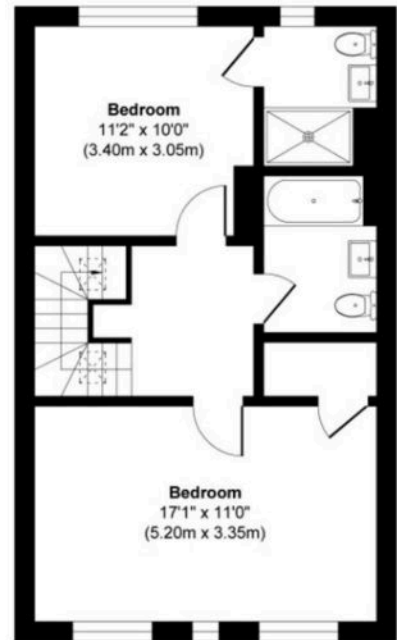




Ground Floor



First Floor



Second Floor



Tomblin Mews, London SW16

Approx. Gross Internal Area 1535sq ft / 142.59sq meters

Whilst every attempt has been made to ensure the accuracy of the floorplan shown, all measurements, positioning fixtures fittings and any other data shown are an approximate interpretation for illustrative purposes only and are not to scale. No responsibility is taken for any errors, omission, miss-statement or use of data show.

Plan produced by AR Net Media-www.arnetmedia.uk



haboodle