



# MARKET STREET

EDENFIELD

# WELCOME HOME

---

Set in the heart of the village, 85 Market Street greets visitors with a blend of modern style and cottage-inspired charm. Wrought iron gates open to a beautifully kept front garden, where a dwarf stone wall and iron fencing form a timeless frame around the home. Anti-slip porcelain tiles lead gracefully to the front door, bordered by neat shingle beds; low maintenance yet brimming with potential for potted blooms, fragrant herbs, or bursts of seasonal colour. Anthracite detailing across the stone façade adds definition, giving this young home a presence that feels both contemporary and quietly classic.

A pathway leads gently around the side of the property, guiding the way to the rear garden and hinting at the tranquillity waiting beyond.







## FIRST IMPRESSIONS

---

Step into the entrance hall, where light lingers lovingly from morning to moonrise, softening every corner as the day drifts by. Vinyl flooring flows underfoot in smooth, uninterrupted lines, while neutral walls create an inviting canvas for arrivals, departures, and the soft rhythm of daily life.

There is a soothing sense of ease here, lots of space for coats, boots, dog leads, and an opportunity for a quiet pause that marks the transition from village bustle to home comfort. To the left, the staircase rises softly towards the bedrooms, while straight ahead, the heart of the home unfurls in warm, welcoming layers.



## CULINARY DELIGHTS

.....

On the right, the kitchen offers a bright, uplifting place to begin each day, the flooring continuing seamlessly, linking the spaces with a gentle, rhythmic flow. A generous window frames views across the front, filling the room with bright, buoyant light from morning to noon.

Dove-grey cabinetry wraps around the walls with quiet elegance, while wooden worktops bring warmth and welcome. Every detail feels thoughtfully placed – from the sink set beneath the window to the modern appliances, including a Zanussi oven, a gas hob, an overhead extractor fan, a dishwasher, a washing machine, and a fridge freezer. It is a room where the simple act of making breakfast feels unhurried and content.

Flowing back through the hallway, a deep storage cupboard offers space for everyday essentials, an unsung hero that keeps life effortlessly ordered.

The cloakroom continues this sense of calm practicality, dressed in soft neutrals with a chrome radiator and vanity basin.





## LIGHT-FILLED LIVING

---

At the rear, the lounge and dining room open up beautifully, a space where mornings arrive gently and evenings glow quietly. Light glides across the room with an almost theatrical grace, welcomed in by broad patio doors that draw the garden close. A soft L-shaped sofa invites slow Sundays and laughter-filled evenings, while the dining nook is perfectly placed for dinners that drift long into the night. This is a room designed for togetherness, where weekends stretch a little longer, and every gathering feels like a cherished moment.





## UPSTAIRS HAVEN

---

Ascend to the first floor, where brightness breathes life into generous rooms. To the left, a spacious bedroom currently styled as a second lounge offers a sanctuary of tranquillity. A Juliet balcony invites breezes and sunlight to spill into the space, framing views that stretch across the village rooflines and towards the fields beyond. This is a room that feels lifted by light alone.

Directly ahead, the bathroom is a blissful bathing retreat where serenity flows like liquid silk. Grey tones and soft tiling create a calm rhythm, while the deep bathtub invites moments of pause beneath the hush of fragrant waters.

Across the landing, the third bedroom is light, gentle, and full of potential. The large window allows daylight to dance through the room, transforming its character from dawn's quiet promise to dusk's golden calm. Its peaceful palette and soft carpet make it ideal as a nursery, quiet study, or walk-in wardrobe.



## PRINCIPAL RETREAT

---

Climb once more to the upper floor and discover the principal suite, where vaulted ceilings rise like a quiet whisper of elegance. Soft grey carpet and neutral tones create a cocooning calm, while the apex window frames sweeping views of neighbouring fields. Here, mornings bloom in golden splendour and evenings settle in serene stillness.

Built-in storage, as well as discreet additional eaves storage, runs the length of the property and keeps the space beautifully uncluttered, perfect for seasonal treasures and cherished memories. While a deep walk-in wardrobe stretches out at the end of the room and into the eaves. The en-suite continues the harmony, with a modern walk-in shower and chrome accents completing this private retreat.



## GARDEN OASIS

---

Step through the patio doors and into a garden that feels like a living poem, written in sunlight and soft breezes. The recently landscaped spaces unfurl across tiers—porcelain patio for morning coffee, a second terrace for alfresco suppers, and a green patch perfect for play, potted planting, or peaceful afternoons. At the edge of the garden, a back gate opens to rolling fields and footpaths, ready for family adventures, dog walks, or moments of quiet amid nature's rhythm.







## OUT & ABOUT

---

Set at the heart of Edenfield village, 85 Market Street enjoys a wonderfully rich sense of community and village life that's increasingly hard to find. This is a place where neighbours know one another and traditions are cherished — with Christmas bringing brass bands and carols around the tree at the church directly opposite the front door, a much-loved annual highlight for locals.

Food and drink are a real draw. The Coach at Edenfield is right on the doorstep and enjoys an outstanding reputation for its food and welcoming atmosphere, making it a firm favourite with villagers. On warmer evenings, a stroll across the fields leads to Dearden Wood Campsite, where woodfired pizzas are served on Friday and Saturday nights — simply bring a picnic blanket and enjoy dining beneath the trees.

Walkers are exceptionally well catered for. Step out and follow East Street up to the back fields, where a network of footpaths opens out across the moors and into Dearden Woods, leading to the much-loved local beauty spot The Plunge — ideal for picnics, paddling and peaceful afternoons surrounded by nature.

Everyday amenities are all close at hand, reinforcing Edenfield's village appeal. Local butchers, bakers, a chemist, hairdressers, takeaways and an artisan café ensure daily life is easy and community-focused, with everything you need just a short stroll away.

Culture thrives here too. The refurbished co-operative building nearby is home to a music school, beauty salon and an arts and events space, while Edenfield proudly sits on the Rossendale Arts Trail. Stocks Cottage has previously opened its doors as a gallery during the Arts Trail weekend, adding to the village's creative spirit.

Beyond the village, there's plenty to explore. Ramsbottom is close by, famed for its steam railway and thriving foodie scene, while Rawtenstall is home to The Whitaker. The Met offers comedy, theatre and live music, and no visit to the area would be complete without a trip to the Bury Market.

Families are well supported, with Edenfield Primary School just moments away, and Haslingden High School and Sixth Form within easy reach. For those with an interest in riding, nearby livery stables with an indoor school and horse walker are within a ten-minute walk. Commuters benefit from excellent access to the tram network, offering swift and convenient links into Manchester plus a bus linking Edenfield with Deansgate in Manchester.

With its vibrant village spirit, countryside walks, cultural life and excellent connectivity, Market Street offers far more than an address — it's a place to feel part of a community, embrace the outdoors and enjoy everything Edenfield and the surrounding towns have to offer.



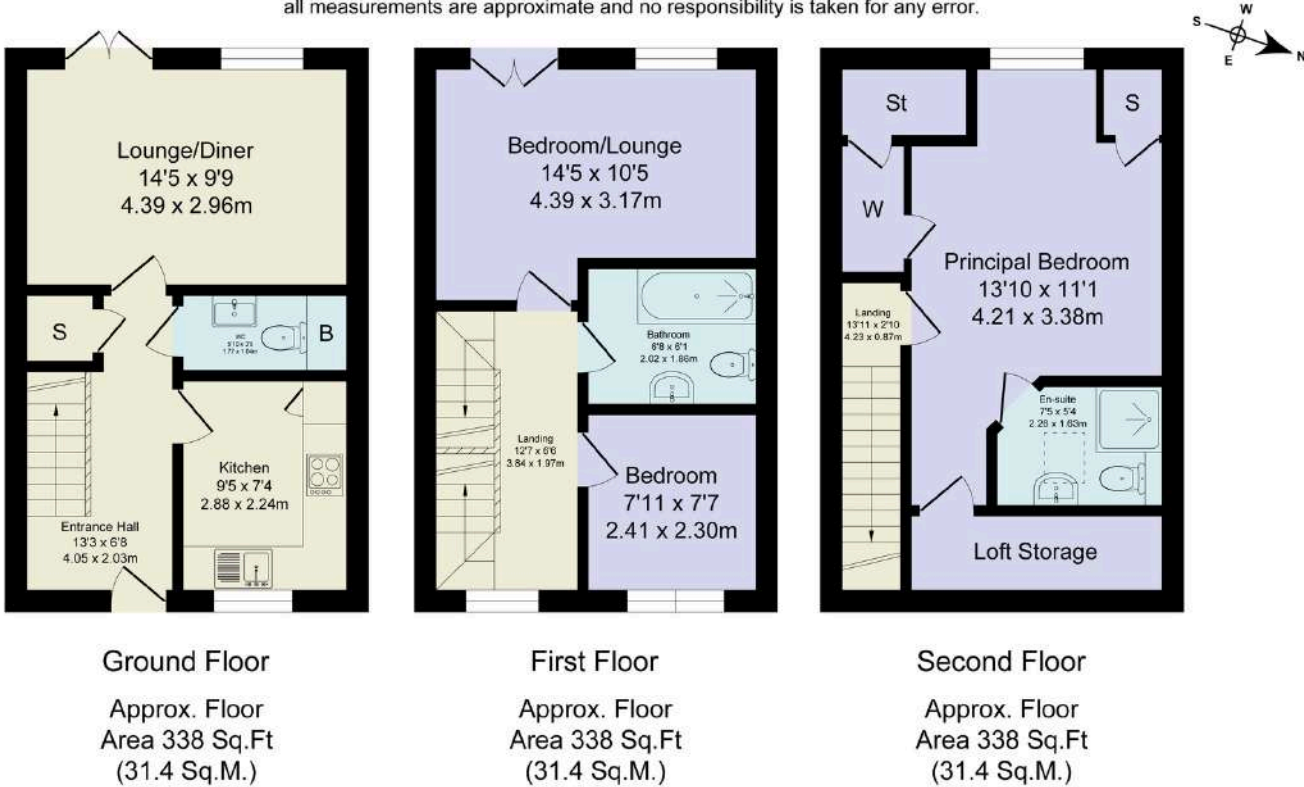
# THE FINER DETAILS

- Contemporary Three Bedroom Townhouse
- Lounge / Diner with Patio Doors to the Garden
- Modern Dove-Grey Kitchen with Wooden Worktops
- Principal Bedroom with Picture Window with Countryside Views and Ensuite
- Driveway for Two Vehicles
- Sun-Filled Landscaped Garden with Large Patio Area
- Freehold
- Rossendale Council Tax Band C

Score	Energy rating	Current	Potential
92+	A		95 A
81-91	B	84 B	
69-80	C		
55-68	D		
39-54	E		
21-38	F		
1-20	G		

Total Approx. Floor Area 1014 Sq.ft. (94.2 Sq.M.)

Surveyed and drawn by Lens Media for illustrative purposes only. Not to scale. Whilst every attempt was made to ensure the accuracy of the floor plan, all measurements are approximate and no responsibility is taken for any error.





# WAINWRIGHTS

ESTATE AGENTS

**To view Market Street,**  
Call 01204 773556 or email [sales@wainwrightshomes.com](mailto:sales@wainwrightshomes.com)