



DUCHESS OF BEDFORDS WALK, £2,000,000

Three bedrooms
Lateral space
Parking
Second Floor with Lift
Highly Desirable Location
Leasehold

ABOUT THE PROPERTY

Three bedroom lateral apartment in one of Kensington's most prestigious residential buildings.

Duchess of Bedford House is ideally positioned for the open spaces of Holland Park and the excellent facilities found along Kensington High Street (Circle and District Lines) and Notting Hill Gate (Central Line and Circle and District Lines).





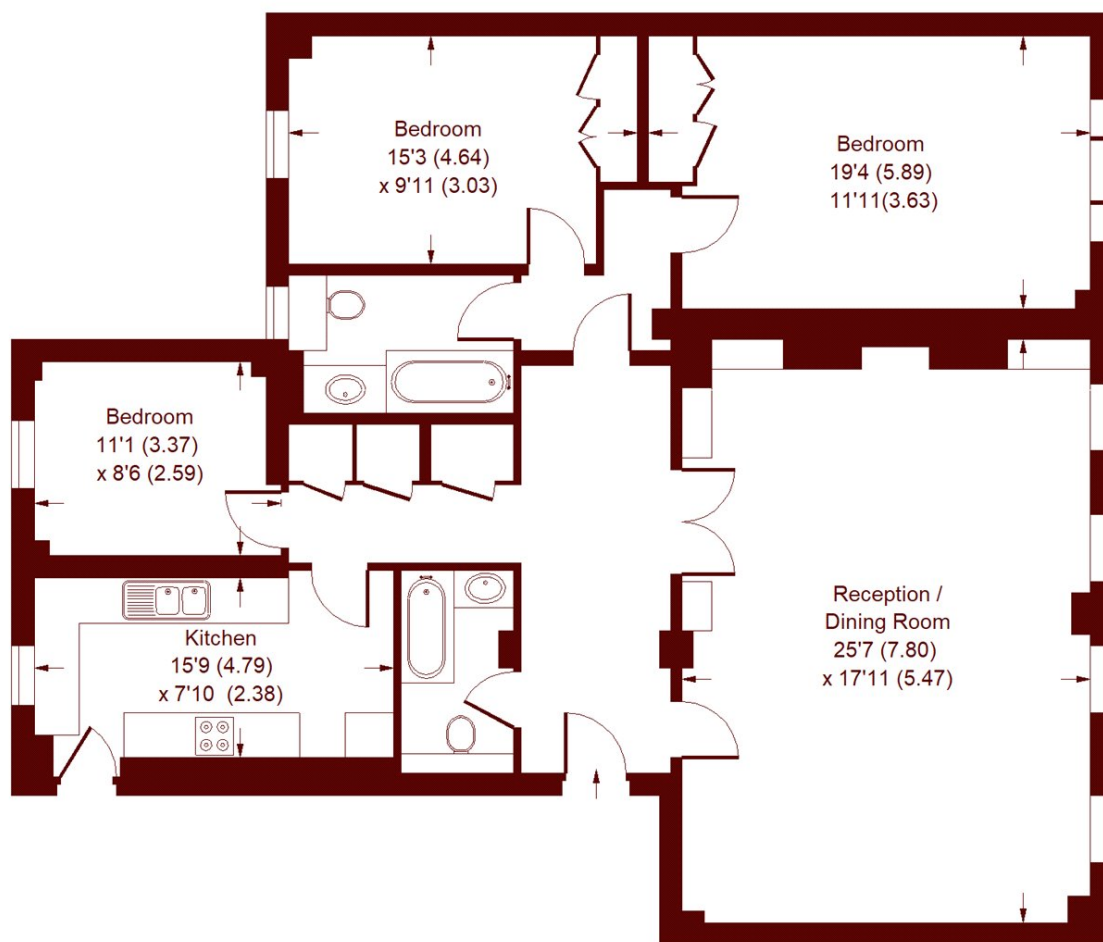




STEP INSIDE DUCHESS OF BEDFORDS WALK

Duchess Of Bedford House, W8

APPROX. GROSS INTERNAL FLOOR AREA
1453 SQFT / 135.0 SQM



SECOND FLOOR

Whilst every attempt has been made to ensure the accuracy of the floor plan, measurements are approximate and not to scale.
No guarantee is given on the total square footage of the property quoted on the plan. Figures given are for guidance.
Plan is for illustration purposes only, not to be used for valuations.

Kensington
020 7368 4450

Energy Rating: C We aim to make our particulars both accurate and reliable. However, they are not guaranteed; nor do they form part of an offer or contract. If you require clarification on any points then please contact us, especially if you're traveling some distance to view. Please note that appliances and heating systems have not been tested and therefore no warranties can be given as to their good working order

MARSH &
PARSONS