



GREENHILL



Turpins Close
Hertford, SG14 2EH

Offers in excess of £400,000



Turpins Close, Hertford, SG14 2EH

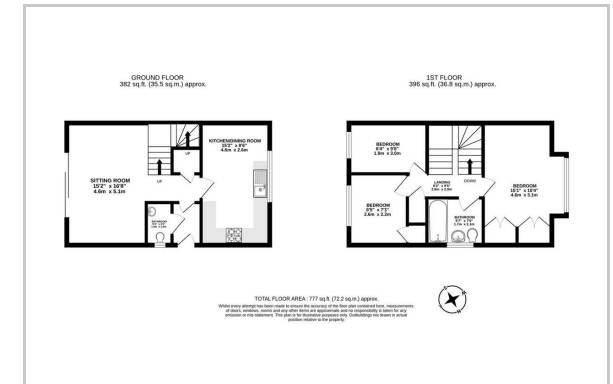
Situated on a popular residential street on the western side of Hertford, this beautifully presented end-of-terrace three-bedroom home has been thoughtfully modernised over the years by the current owners. Offering approximately 777 sq. ft. of well-balanced accommodation, the property combines contemporary finishes with practical living space, while also offering exciting potential to extend at the rear or add a conservatory (subject to the usual planning consents).



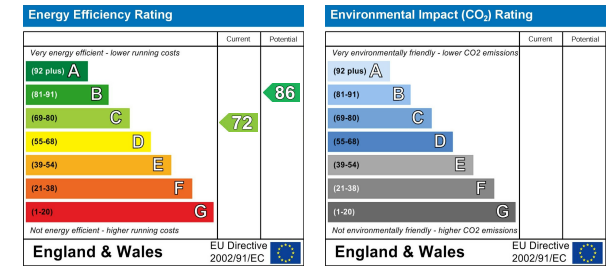
Area Map



Floor Plan



Energy Efficiency Graph



These particulars, whilst believed to be accurate are set out as a general outline only for guidance and do not constitute any part of an offer or contract. Intending purchasers should not rely on them as statements of representation of fact, but must satisfy themselves by inspection or otherwise as to their accuracy. No person in this firm's employment has the authority to make or give any representation or warranty in respect of the property.

Sopers House Sopers Road, Cuffley, EN6 4RY

Tel: 01707 802001 Email: sales@greenhillestates.co.uk <https://www.greenhillestates.co.uk>