



White Post Lane, E9

£575,000

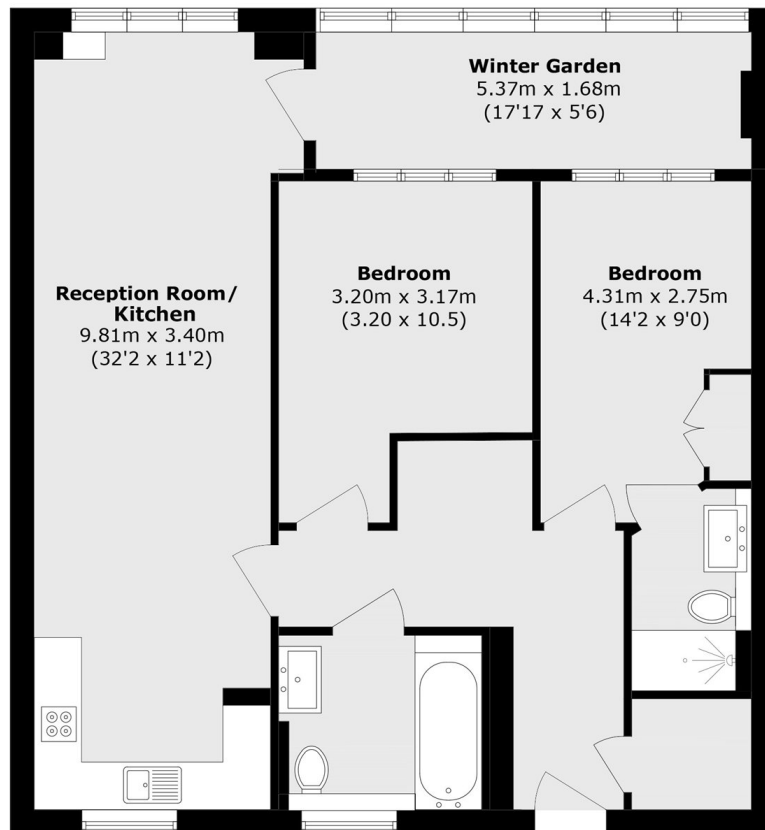
A Two Double Bedroom, Two Bathroom apartment located in the old Bagel Factory that measures in excess of 950 square feet. This property offers open plan living with dedicated space to dine, floor to ceiling windows with panoramic views from the winter terrace.

Perfectly located in the heart of the sought after Hackney Wick with its abundance of cafes, restaurants and bars. Stratford, Homerton and Hackney Wick Station are just a short walk away and provide access to the city and central London. The nearby canals also providing beautiful scenery and links to London Fields, Victoria Park and Queen Elizabeth Park

Features

- Two Double Bedrooms
- Over 950 square feet
- Winter Terrace
- Hackney Wick
- Two Bathrooms

White Post Lane, London, E9



Total area (approx.): 88.5 sq. m (952.6 sq. ft)