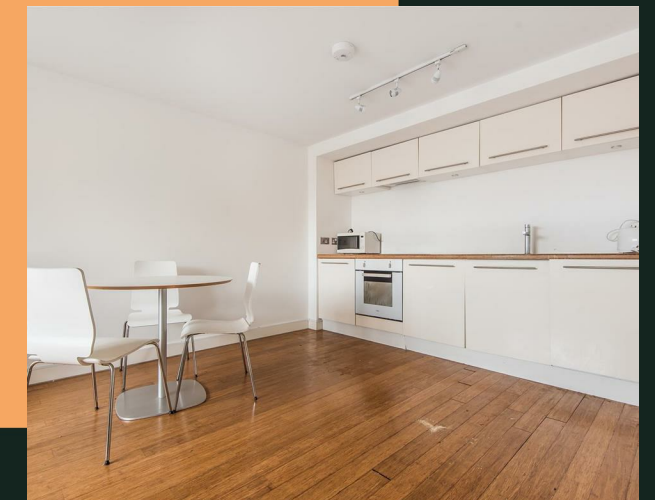
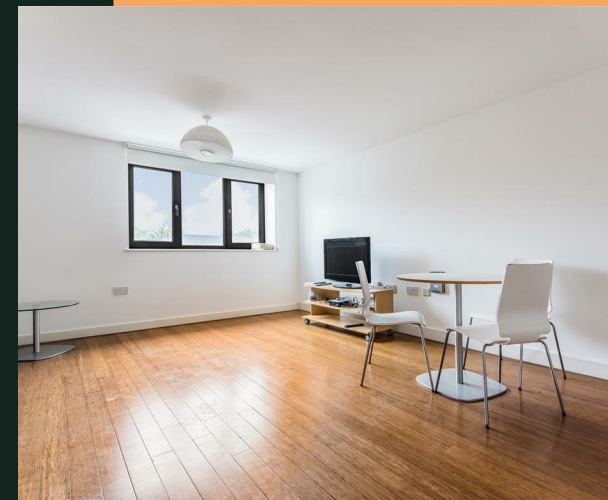


# Greenhouse, LS11

PROPERTY ADDRESS  
415 Greenhouse  
Leeds  
LS11 6AE

Energy Efficiency Rating		Current	Potential
<i>Very energy efficient - lower running costs</i>			
(92 plus) <b>A</b>			
(81-91) <b>B</b>			
(69-80) <b>C</b>		79	79
(55-68) <b>D</b>			
(39-54) <b>E</b>			
(21-38) <b>F</b>			
(1-20) <b>G</b>			
<i>Not energy efficient - higher running costs</i>			
<b>England &amp; Wales</b>	EU Directive 2002/91/EC		



- Total cost of first month: £1,561.53 (rent & deposit)
- Furnished
- On-site gym
- Available from 21 July
- Open plan

The furnished apartment briefly comprises of an open-plan living and kitchen area with integrated appliances, a double bedroom and a bathroom. There is an on-site gym for residents.

Situated in the regenerated Beeston Road area of Leeds, the building is located close to the M621 and is well connected to the M62 taking you East/West or the M1, taking you North/South, with great bus, cycle and walking links into the city centre.

Available from 21 July subject to acceptable references.

Rent: £725 per calendar month  
Deposit: £836.53  
Holding deposit: £167.30

Electricity, water and heating at the building are supplied by Greenhouse Utilities Limited. There is no option to change this to another provider due to the billing of on-site energy production.

The standard broadband is a free service to Tenants. Paid services can be purchased from Hyperoptic or Virgin Media only.

Please note that the photos are of a similar apartment. Viewing is essential.



Your Text Here

