







## 287 Carterknowle Road

Sheffield • South Yorkshire • S11 9FY

Guide Price £475,000 - £495,000

Tucked away on the upper section of the ever-popular Carterknowle Road, S11, this attractive three-bedroom semi-detached home has been lovingly owned by the same family for over 40 years, offering a rare opportunity to acquire a truly cherished property in a sought-after residential setting. The property welcomes you through a smart composite front door into a spacious and inviting hallway, setting the tone for the light and airy accommodation throughout. The main living space is particularly impressive, generous in size and thoughtfully arranged with a dual-aspect design. A charming bay window to the front and a large rear window overlooking the beautifully landscaped garden allow natural light to flood the room, enhancing the neutral décor and warm wood-effect flooring. A feature fireplace provides a cosy focal point, perfect for relaxing evenings. To the rear, the contemporary kitchen is fitted with sleek matte units complemented by elegant granite worktops. Integrated appliances include a Neff oven, electric hob, fridge, and dishwasher, creating a stylish yet highly functional space for modern family living. Steps lead down to a partially converted basement level, offering excellent flexibility. This space currently incorporates a utility area with sink, plumbing, and washing machine, alongside a separate WC. There is also direct access to the rear terrace, as well as a highly practical adjoining storage area—ideal for further development or everyday use. Upstairs, the property boasts three well-proportioned double bedrooms. Two benefit from bespoke, full-length fitted wardrobes providing excellent storage solutions, while the rear-facing bedrooms enjoy delightful views over the landscaped garden. The bathroom is beautifully appointed with a modern yet characterful suite, including a roll-top bath, floating hand basin, walk-in corner rainfall shower, and a smart Bluetooth-enabled mirror with integrated lighting. Externally, the property continues to impress. A block-paved driveway provides off-road parking, while steps lead down to a stunning landscaped rear garden. Thoughtfully designed, the garden features a decked terrace set alongside decorative grey slate, leading down to a level lawn bordered by an array of vibrant planting. This is a truly special outdoor space—perfect for entertaining, family time, or simply unwinding in a peaceful setting. Carterknowle Road is widely regarded as one of Sheffield's most desirable residential locations, particularly popular with families. Positioned close to Ecclesall Road, the area offers an excellent range of independent shops, cafés, and restaurants, alongside access to highly regarded local schools. With beautiful green spaces and parks nearby, this location perfectly balances urban convenience with outdoor lifestyle, making it an ideal place to call home.






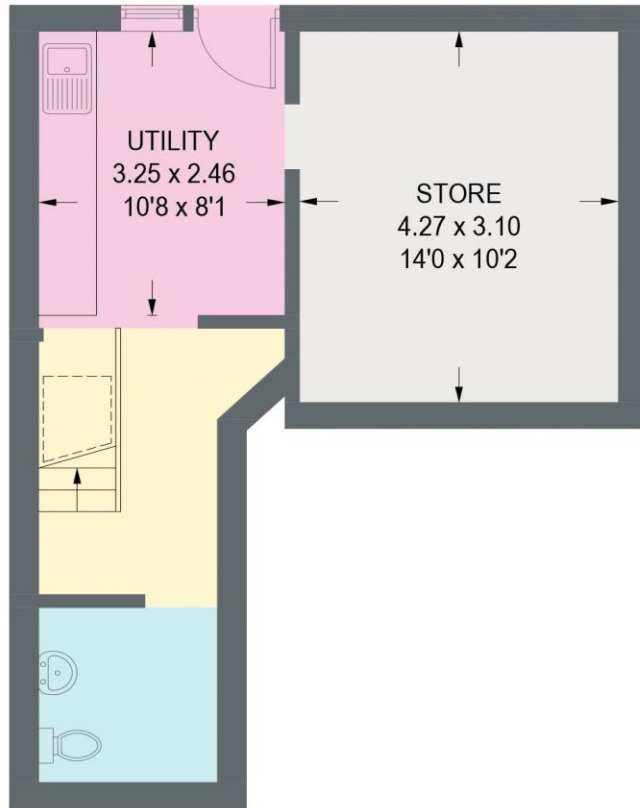
- Attractive Semi-Detached Family home
- 3 Double Bedrooms & Modern Bathroom
- Light & Airy Accommodation
- Spacious Open Plan Living / Dining
- Contemporary Kitchen Design
- Basement Level, Offering Excellent Flexibility
- Stunning Landscaped Rear Garden
- Off Street Parking
- Freehold
- Council Tax Band D, EPC Rating D



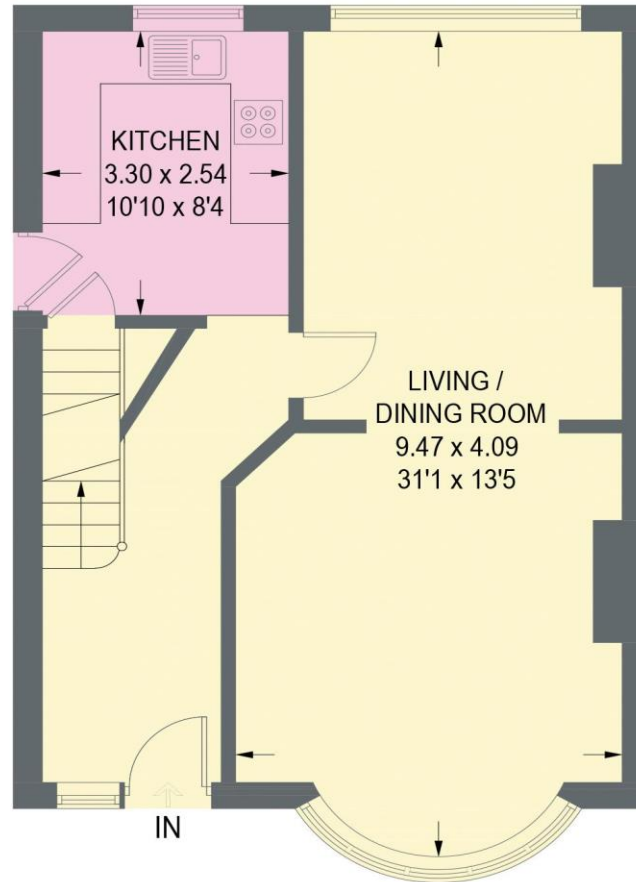
# 287 CARTERKNOWLE ROAD

APPROXIMATE GROSS INTERNAL AREA = 138.6 SQ M / 1491 SQ FT

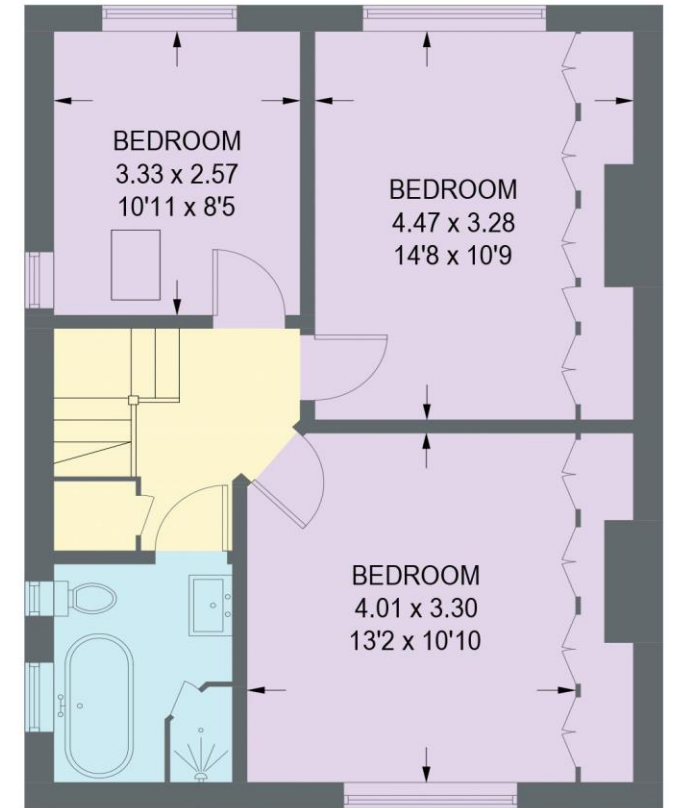
 = REDUCED HEADROOM BELOW 1.5m / 5'0"



**LOWER GROUND FLOOR**  
33.5 SQ M / 360 SQ FT



**GROUND FLOOR**  
53.5 SQ M / 576 SQ FT



**FIRST FLOOR**  
51.6 SQ M / 555 SQ FT

Illustration for identification purposes only,  
measurements are approximate, not to scale.



haus

West Bar House, 137 West Bar, Sheffield, S3 8PU  
hello@haushomes.co.uk haushomes.co.uk

0114 276 8868