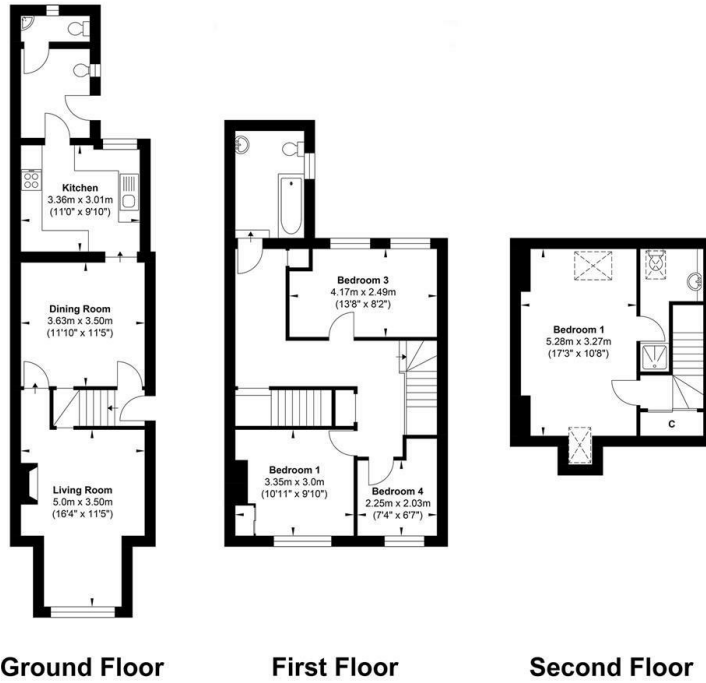




6 Lawns Cottages Lawns Road, Rudgwick, RH12 3AE

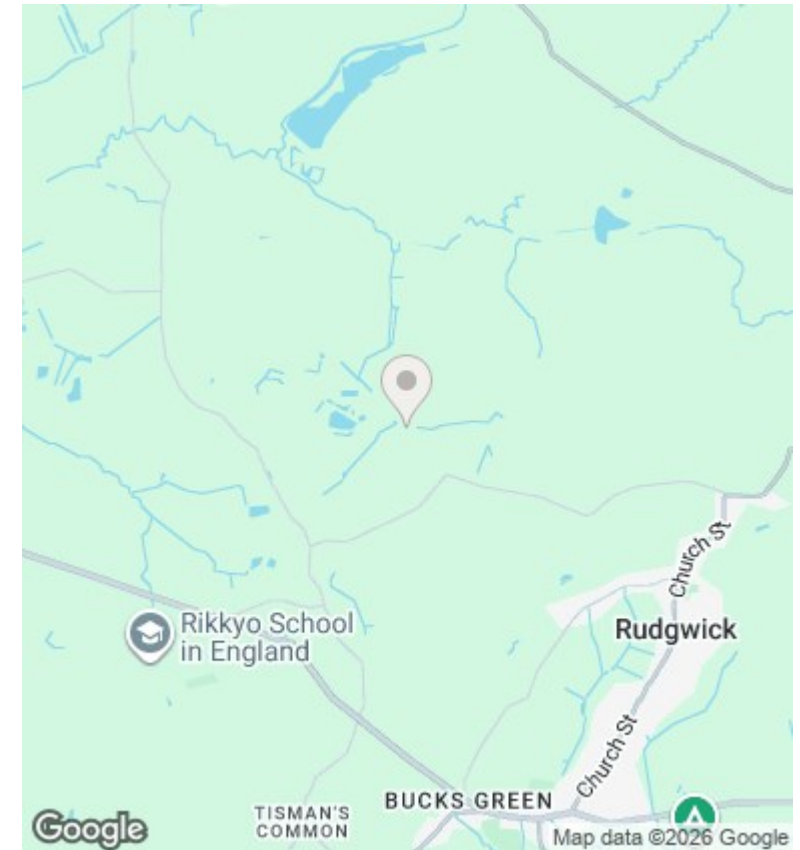
£2,250 Per Month

- 4 bedrooms
- Utility and Ground Floor WC
- Backing on to Downslink
- Full Fibre SuperFast Broadband available
- Family bathroom and ensuite
- Available now
- Rural Location
- 2 reception rooms
- Lots of space
- Garage and long drive



Gross Internal Floor Area : 129.89 m2 ... 1398.12 ft2

Whilst every attempt has been made to ensure the accuracy of the floor plan contained here, measurements of doors, windows, rooms and any other items are approximate and no responsibility is taken for any error, omission, or mis-statement. This plan is for illustrative purposes only and should be used as such by any prospective purchaser. The services, systems and appliances shown have not been tested and no guarantee as to their operability or efficiency can be given.



Directions

Viewings

Viewings by arrangement only. Call 01483 276565 to make an appointment.

Council Tax Band

E

EPC Rating:

E

Energy Efficiency Rating		Current	Potential
<i>Very energy efficient - lower running costs</i>			
(92 plus)	A		
(81-91)	B		
(69-80)	C		73
(55-68)	D		
(39-54)	E	46	
(21-38)	F		
(1-20)	G		
<i>Not energy efficient - higher running costs</i>			
England & Wales		EU Directive 2002/91/EC	