



Holdens
ESTATE AGENTS

47-49 Berry Lane, Longridge
£1,800 pcm

Holdens
ESTATE AGENTS



47-49 Berry Lane

47-49 Berry Lane, Preston

Prominent main street property with 1,775 sq ft flexible space. Features open-plan ground floor, three first-floor offices, extensive window frontage, and option to rent offices separately. Council Tax band: TBD

Tenure: Freehold



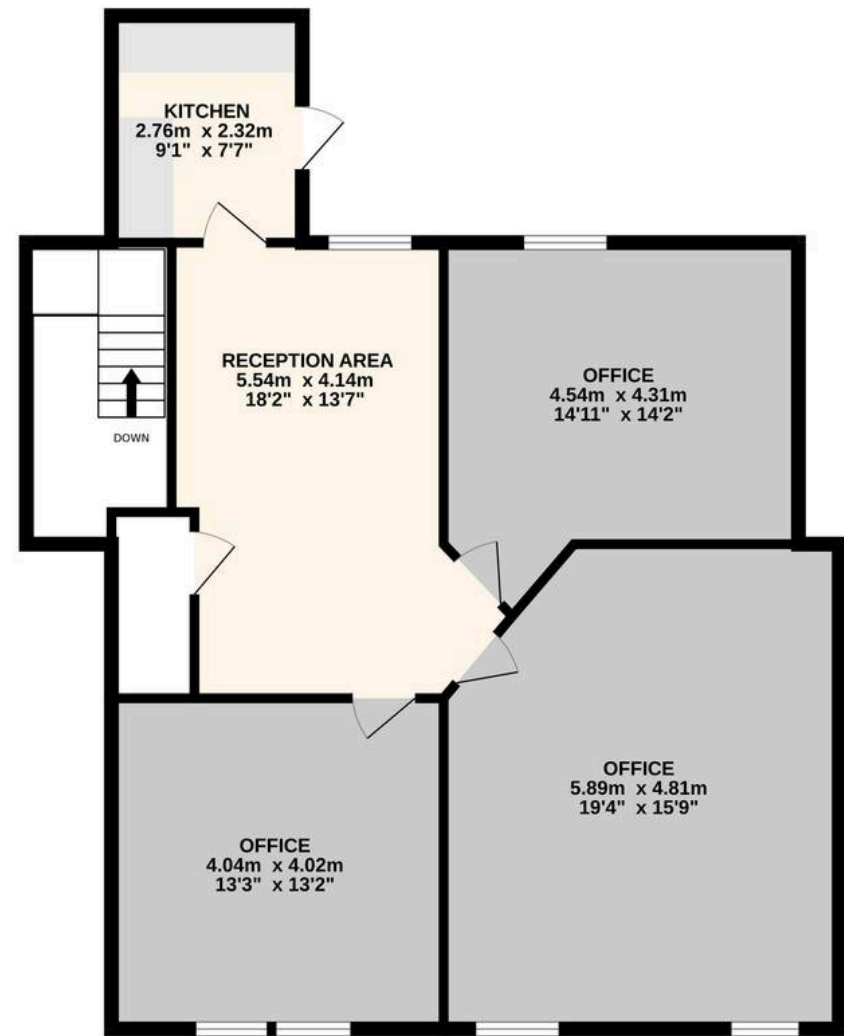




GROUND FLOOR
72.0 sq.m. (775 sq.ft.) approx.



1ST FLOOR
92.9 sq.m. (1000 sq.ft.) approx.



TOTAL FLOOR AREA : 164.9 sq.m. (1775 sq.ft.) approx.

Every attempt is made to ensure accuracy, however all measurements are approximate. This plan is for illustrative purposes only and is not to scale.
Made with Metropix ©2026



Holdens Longridge

66 Derby Road, Longridge – PR3 3FE

01772 233380

longridge@holdens.co.uk

www.holdens.co.uk/

Disclaimer: All information such as plans, dimensions, and details about the property's condition or suitability is provided in good faith and believed to be accurate, but should not be relied upon without independent verification. Buyers or tenants must carry out their own checks. Appliances and systems haven't been tested. It's strongly advised to get professional inspections before making any commitments. No employee or agent of Holdens Estate Agents is authorised to make promises or guarantees about the property. These details are for general guidance only and do not form part of any contract. All discussions with Holdens Estate Agents are subject to contract.