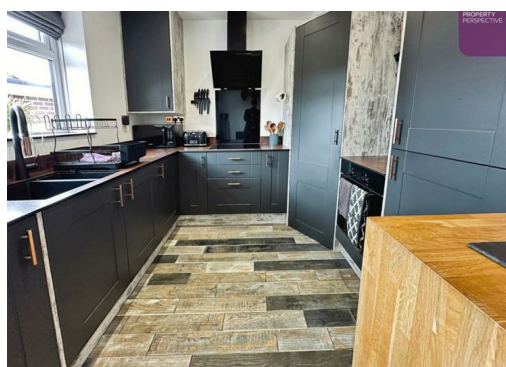




South View, Preston, PR4 2TT

£210,000

PERFECT FIRST TIME BUYER OPPORTUNITY!!! We are delighted to be able to present to you this beautifully presented and maintained 3 bedroom semi-detached house, situated in Kirkham!



28 South View, Kirkham, Preston, PR4 2TT

A well-presented three-bedroom semi-detached house situated in the popular market town of Kirkham. The property offers spacious and versatile accommodation comprising a welcoming entrance hall, comfortable open plan lounge/modern fitted kitchen/dining area, three well-proportioned bedrooms, and a family bathroom. Externally, there are gardens to the rear together with off-road parking to the front. Conveniently located for local amenities, schools, and transport links, this property is ideally suited to families, first-time buyers, and investors alike.

GROUND FLOOR

Lounge 10'4" x 12'1" (3.15m x 3.69m)

Tile flooring with open aspect through to the kitchen/diner

Kitchen/diner 8'11" x 16'1" (2.74m x 4.92m)

Tile flooring with patio doors leading to the rear garden, spotlighting and blind. A range of fitted kitchen units, worktops and integrated kitchen appliances, including oven, hob, hood and fridge-freezer

FIRST FLOOR

Bedroom 12'8" x 9'10" (3.87m x 3.00m)

Carpet flooring with bay fronted window and curtains

Bedroom 9'11" x 9'1" (3.03m x 2.79m)

Carpet flooring with window to the rear elevation and curtains

Bedroom 9'3" x 5'11" (2.83m x 1.82m)

Carpet flooring with window to the front elevation and curtains

Bathroom

High quality vinyl flooring with 2 piece bathroom suite in white, spotlighting and tiled decor

EXTERNAL

Spacious and private South-facing rear garden, enclosed by panel fencing with loose slate and laid to lawn. Large driveway to the front of the property, capable of accommodating 4 vehicles, leading to a detached single garage (converted to outbuilding with no garage door).





