



121 Hallwicks Road, Luton, LU2 9BH

Nova Estate Agents are delighted to offer to the market this beautifully presented three bedroom mid-terrace family home, situated on the ever popular Hallwicks in Luton.

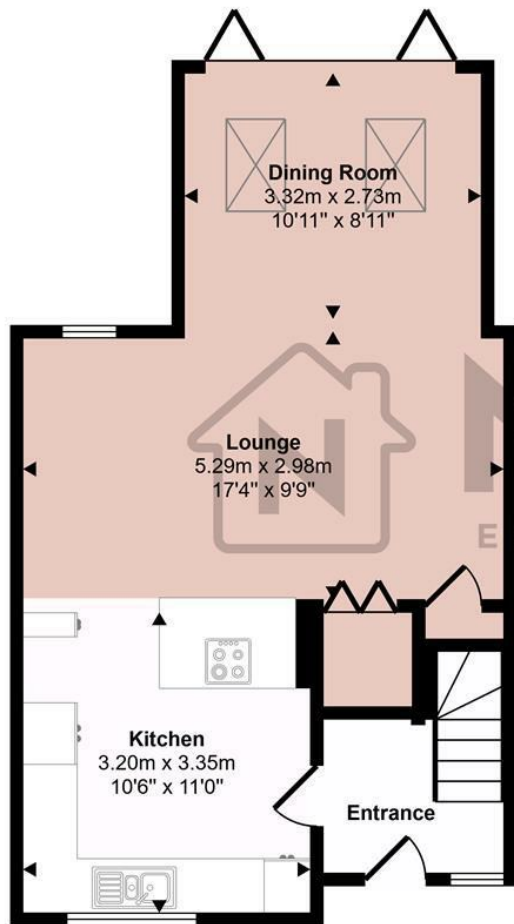
Offered to the market chain free, this exceptional property has been maintained to an outstanding standard by the current owners and is ready for its next family to move straight into.

The ground floor boasts a bright and spacious open plan layout, creating a fantastic flow between the living and dining areas, perfect for modern family living and entertaining. The property also benefits from a single storey rear extension, further enhancing the generous living space. The heart of the home is the stunning recently fitted contemporary kitchen, finished to an exceptional standard with both style and practicality in mind.

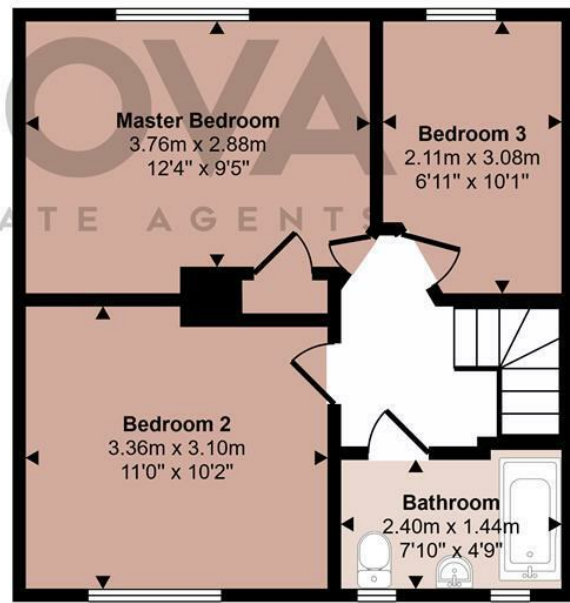
Upstairs, you'll find three well proportioned bedrooms along with a beautifully presented recently

- Nova Estate Agents
- Open Plan Living
- Three Bedrooms
- Newly Fitted Kitchen
- Large Rear Garden
- Driveway For Two Cars
- Press Play Button For 360° Walkaround Tour
- Extended
- CHAIN FREE

£325,000



Ground Floor



First Floor

This floorplan is only for illustrative purposes and is not to scale. Measurements of rooms, doors, windows, and any items are approximate and no responsibility is taken for any error, omission or mis-statement. Icons of items such as bathroom suites are representations only and may not look like the real items. Made with Made Snappy 360.

Energy Efficiency Rating		Current	Potential
Very energy efficient - lower running costs			
(92 plus) A			
(81-91) B			
(69-80) C		75	86
(55-68) D			
(39-54) E			
(21-38) F			
(1-20) G			
Not energy efficient - higher running costs			
England & Wales	EU Directive 2002/91/EC		