

Living  
made  
better

New Caledonian Wharf  
Surrey Quays, SE16 7TN



2



2



1



B

Asking Price £550,000

# New Caledonian Wharf, Surrey Quays, SE16 7TN

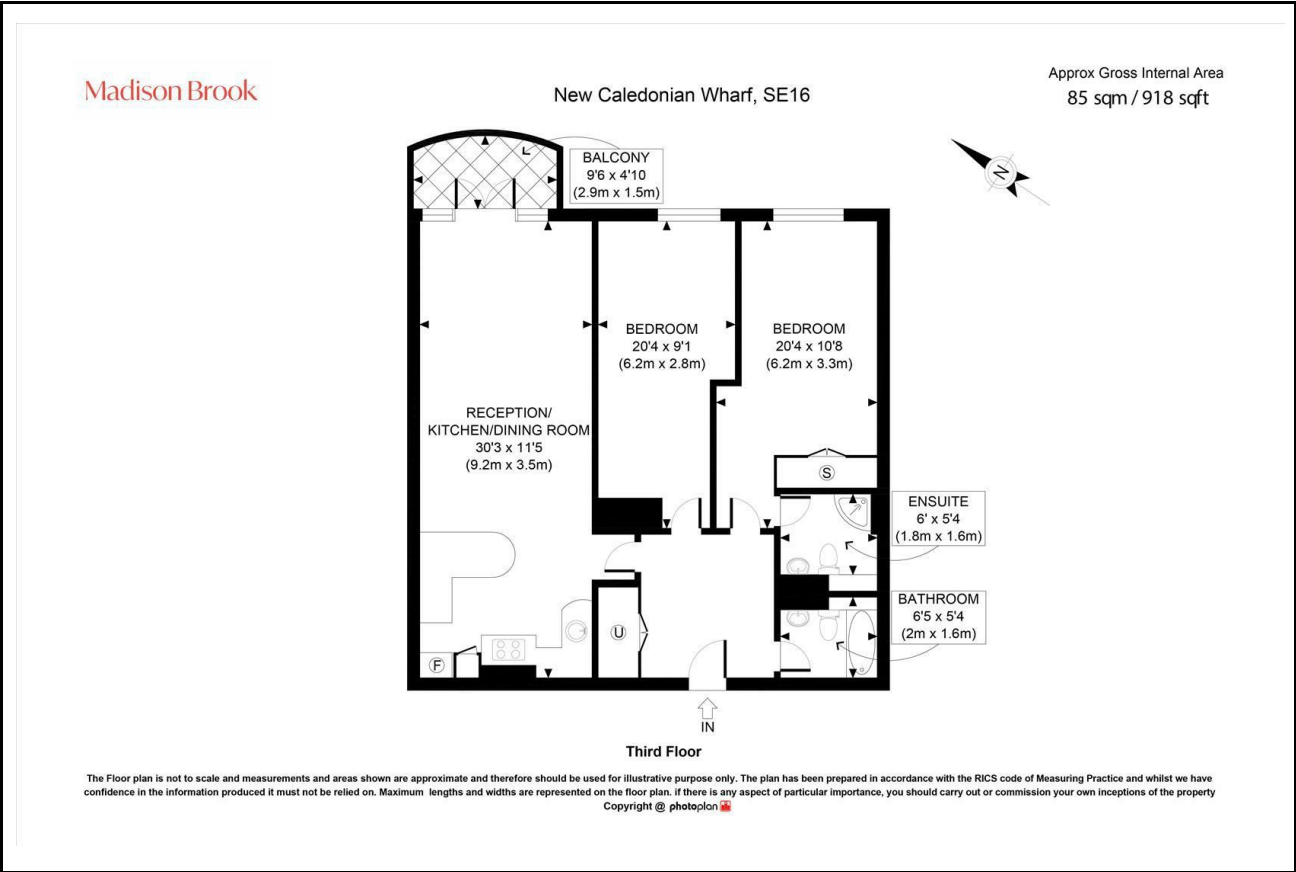
Madison Brook

## Property Summary

A spacious and well-presented two-bedroom apartment set within the popular New Caledonian Wharf riverside development. The property features a bright open-plan reception with modern fitted kitchen, access to a private balcony, two double bedrooms including a principal bedroom with en-suite shower room, and a stylish family bathroom. Residents benefit from concierge services, a gym, swimming pool and parking, with excellent transport links and riverside amenities close by.

Service charge: £5964.64 pa | Ground rent: £400 pa | Lease: 88 years remaining

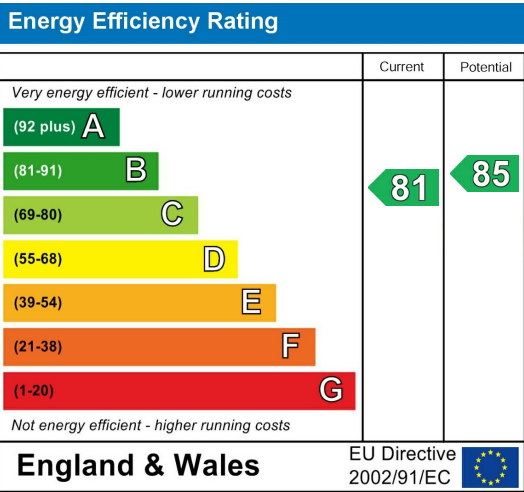
## Floorplan



## Area Map



## Energy Efficiency Graph



These particulars, whilst believed to be accurate are set out as a general outline only for guidance and do not constitute any part of an offer or contract. Intending purchasers should not rely on them as statements of representation of fact, but must satisfy themselves by inspection or otherwise as to their accuracy. No person in this firms employment has the authority to make or give any representation or warranty in respect of the property.

43 Loampit Vale, Lewisham, London, SE13 7FT  
Tel: 020 3946 6200 Email:  
lewisham@madisonbrook.com  
<https://madisonbrook.com/>