



Elstree Road, Bushey Heath, WD23

Bushey

£735,000

Bedrooms: 2

Bathrooms: 2

Receptions: 2

A bright and spacious TWO DOUBLE BEDROOM, TWO BATHROOM, THREE RECEPTION ROOM DETACHED CHALET BUNGALOW situated on a sought after residential road in the heart of Bushey Heath, conveniently located and within walking distance to all local shopping /transport facilities and places of worship. The property is being offered in good decorative order and benefits from: Replacement Double Glazed Windows, Guest Bathroom, Gas Fired Heating To Radiators, Living Room, Dining Room, Study, TV Room, Fully Fitted Kitchen/Breakfast Room, Bedroom One With En Suite Shower Room & Walk In Wardrobe, Bedroom Two With En Suite Bathroom, Secluded Rear Garden, Garage, Off Street Parking.

CHAIN FREE







Elstree Road, Bushey Heath, Bushey, WD23

Approximate Area = 1738 sq ft / 161.4 sq m (includes garage)

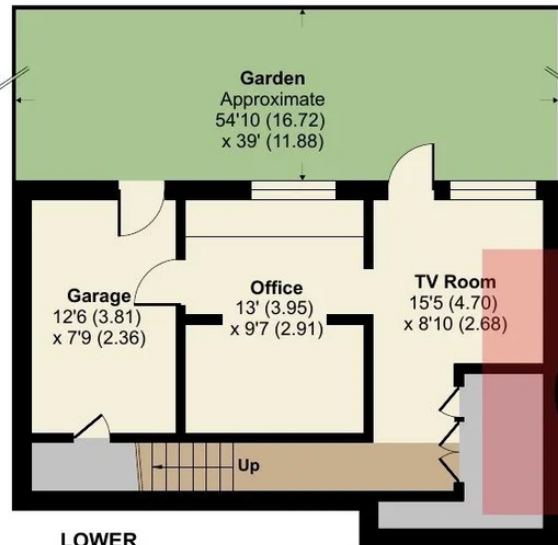
Limited Use Area(s) = 102 sq ft / 9.4 sq m

Total = 1840 sq ft / 170.8 sq m

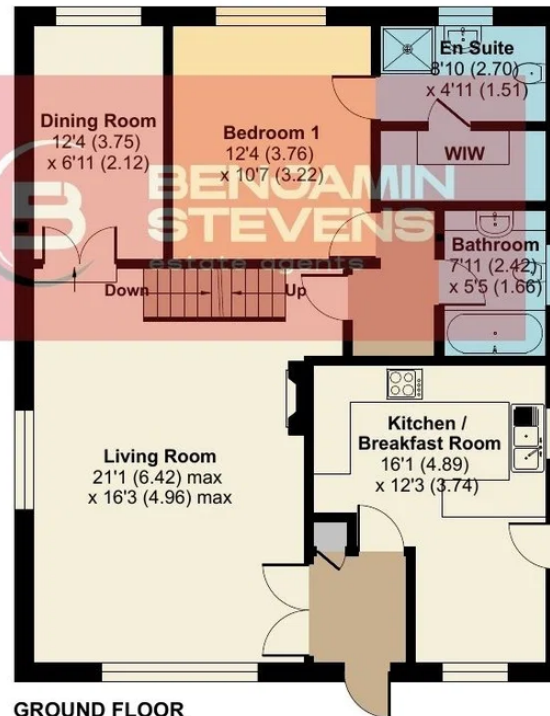
For identification only - Not to scale



Denotes restricted head height



LOWER GROUND FLOOR



GROUND FLOOR



FIRST FLOOR



Floor plan produced in accordance with RICS Property Measurement 2nd Edition, Incorporating International Property Measurement Standards (IPMS2 Residential). © nctecom 2026. Produced for Benjamin Stevens. REF: 1465001