



Guide Price
£212,500

Leasehold

2x  1x  1x 

**Hawley Drive,
Leybourne, West
Malling, Kent, ME19**

OVER 60?

Secure this property
for up to **59% less!**

Wards
Helping you move forwards



Main features

- Beautifully presented modern first floor apartment
- Light, bright & airy accommodation
- Surrounded by countryside & woodland walks
- Allocated parking to the rear of the property
- Discounted open market value scheme

Accommodation

FIRST FLOOR

Entrance Hall

Lounge/Kitchen: 23'7 x 11'11 (7.19m x 3.63m)

Bedroom 1: 16'6 x 10'4 (5.03m x 3.15m)

Bedroom 2: 12'7 x 7'0 (3.84m x 2.14m)

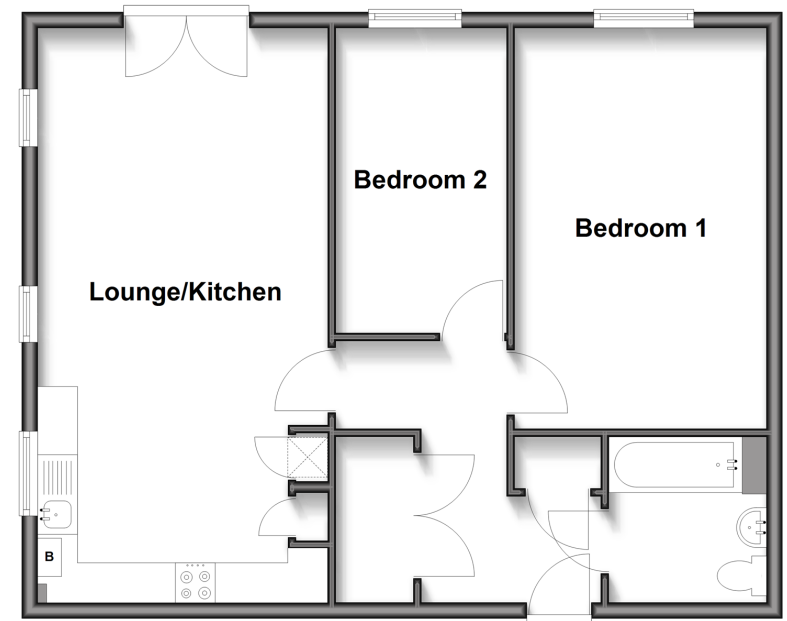
Bathroom

OUTSIDE

Allocated Parking

First Floor

Approx. 65.9 sq. metres (709.5 sq. feet)



Call Kings Hill - 01732 222211 ■ wardsofkent.co.uk

- Legal advice should be taken to verify fixtures/fittings, planning, alterations and/or lease details
- Appliances & services are untested, dimensions are approximate and floor plans are not to scale
- Through a Homewise Home For Life Plan people aged 60+ can secure this property for up to 50% less, by purchasing a Lifetime Lease.



12405139/20251013/EN/NR