

## Shad Thames, SE1

£3,700 Per calendar month

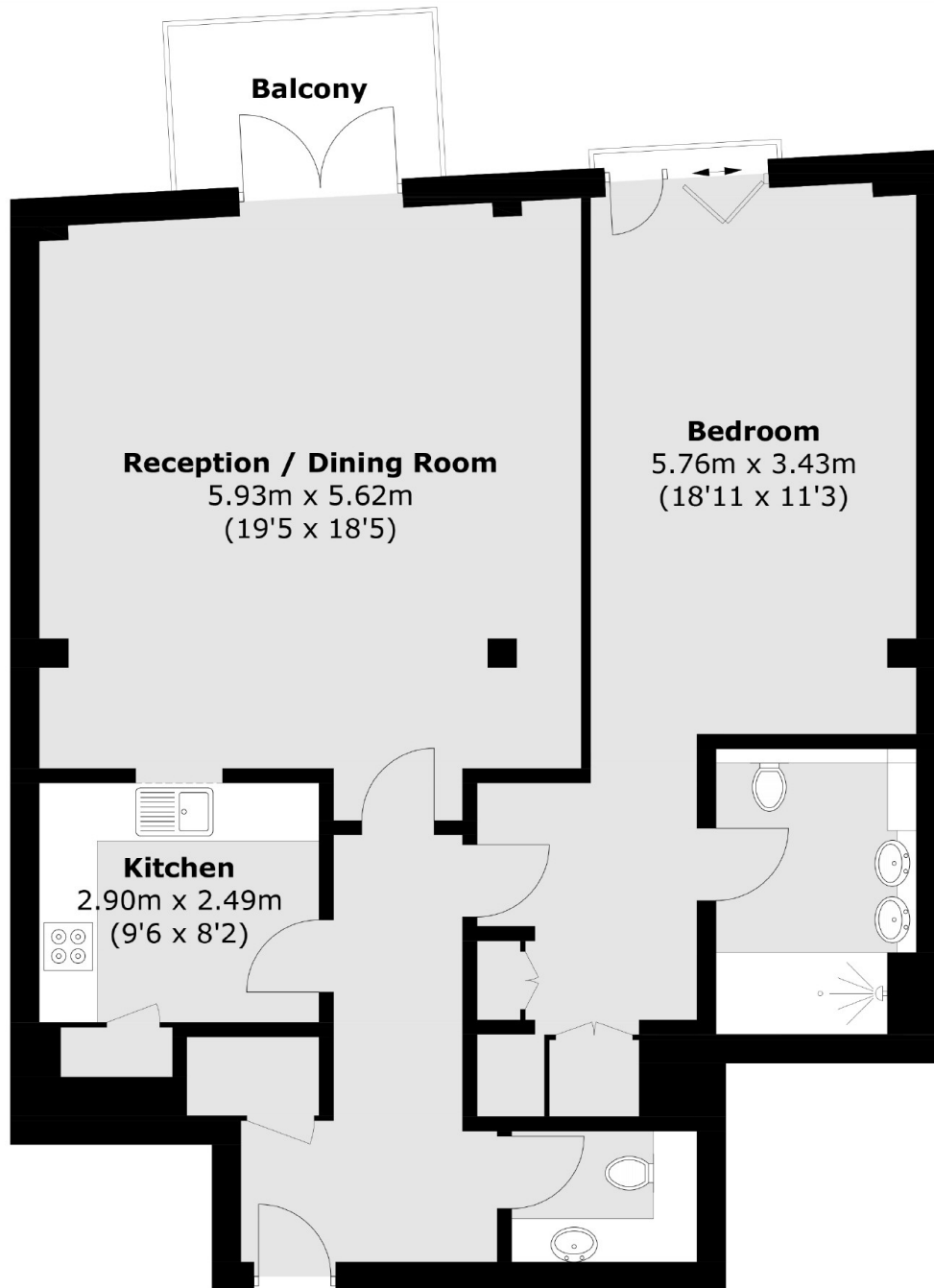
An extremely impressive one double bedroom riverside apartment in Tea Trade Wharf overlooking The River Thames. The accommodation is arranged over 1000 square feet with a spacious reception room.

Tea Trade Wharf is one of the most sought after developments in Shad Thames. It is just moments from a vast selection of bars and restaurants.

### Features

- One Double Bedrooms
- Parking
- Concierge
- Balcony
- Wood Flooring
- Shad Thames

Shad Thames,  
London, SE1



Total area (approx.): 91.4 sq. m (983.8 sq. ft)  
Balcony area (approx.): 4.7 sq. m (50.6 sq. ft)