



2 Humphreys Bridge, Christchurch BH23 4HX

£899,950

Mitchells

1963 — TODAY



Humphreys Bridge, Christchurch

An outstanding and luxuriously appointed coastal home of about 2560sq ft just moments from the award winning beaches at Friars Cliff. Currently being used for high-end holiday rentals, no expense has been spared on the comprehensive refurbishment of this most stylish home. Strongly recommended. Boasting four large double bedrooms, all with their own luxury en-suites and also featuring stunning open plan living space with marble flooring, this property really has the WOW factor.

The garden seamlessly links with the living space and enjoys a Tiki bar with ambient lighting allowing cool outside entertaining whilst the lawn is boarded by an ornamental stream. Set behind electric security gates and offered with no forward chain, this stunning home offers the very best in contemporary living. Please note the property is currently being used for holiday lettings so can be sold as an ongoing business and fully furnished if required.



The Property

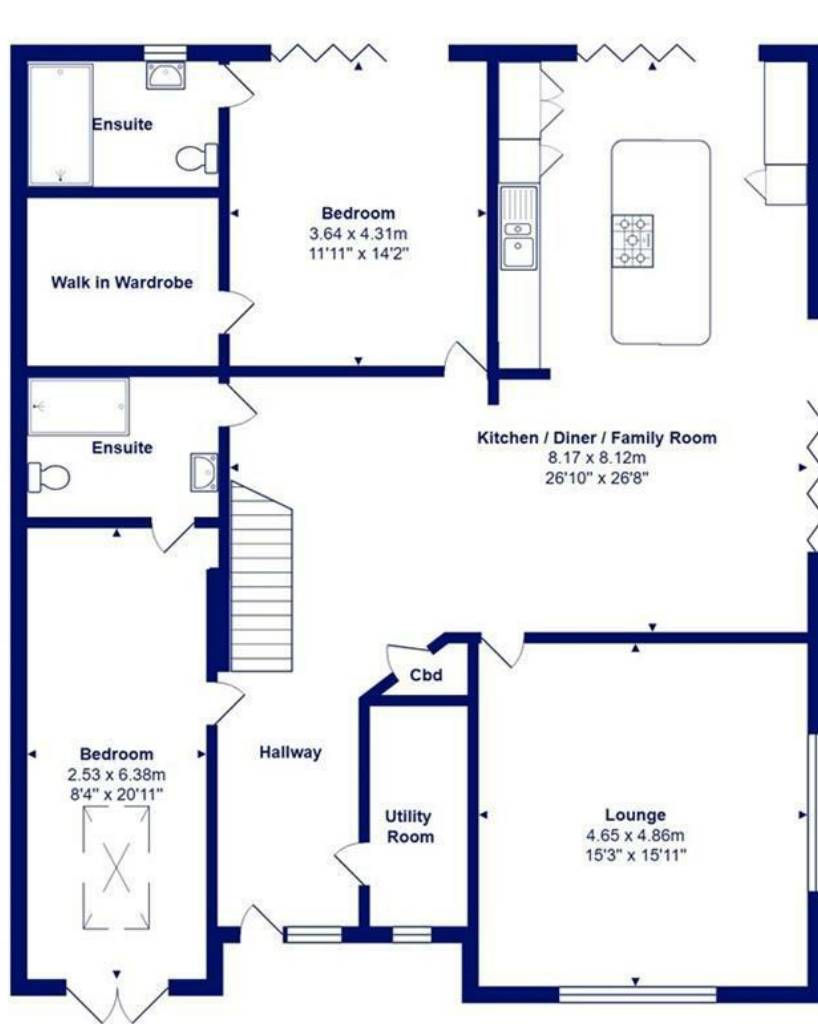
- Spacious detached home of about 2560sqft, right by the beach that has been professionally and comprehensively refurbished to the highest of standards
- Striking external elevations with complete privacy, secure parking and electric charging facility, outside store and landscaped gardens
- Fantastic master suite with large walk in dressing room and huge en-suite bathroom, three further double rooms all with en-suites
- Designer sanitary ware and tiling, high end kitchen with quartz worktops and quality integrated appliances
- Marble flooring to the ground floor with underfloor heating, controlled by a NEST system
- Spacious lounge with 'Jack and Jill' log burner that can be enjoyed from all the living space
- Re-wired, re-plumbed, Gas central heating and immaculate internal décor
- Highcliffe schools catchment area, walking of local shops, pubs, beach (dog friendly)





Location





Ground Floor



First Floor



Total Area: 237.7 m² ... 2559 ft² (excluding balcony)
 All measurements are approximate and for display purposes only







www.mitchells.uk.com
Highcliffe@mitchells.uk.com
01425 272206

Highcliffe
284 Lymington Road
Highcliffe
Christchurch
BH23 5ET

