



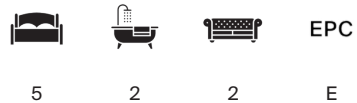
MAYFIELD AVENUE

London W4



MAYFIELD AVENUE

A Five-Bedroom Family Home in the Heart of Turnham Green



Local Authority: London Borough of Hounslow

Council Tax band: G

Tenure: Freehold

Guide Price: £2,300,000



A SPACIOUS AND WELL-PROPORTIONED FAMILY HOME ON MAYFIELD AVENUE, W4, OFFERING HIGH CEILINGS, GENEROUS ROOM SIZES AND A SUBSTANTIAL REAR GARDEN.

Arranged over four floors and measuring approximately 2,216 sq. ft., the property provides excellent scope for improvement and modernisation. The ground floor features an impressive double reception room with a bay window and great ceiling height, leading through to a dining area and a large kitchen. Beyond this sits a bright conservatory-style family room with direct access onto a notably large garden, ideal for families, entertaining or future landscaping projects.

The first floor comprises three good-sized bedrooms, including a substantial principal room spanning the width of the house, along with a family bathroom and an additional shower room. The second floor offers two further double bedrooms, creating flexible accommodation for guests, children or home working.

A useful lower-ground cellar serves as the perfect home office space, offering privacy and versatility, rather than just storage.





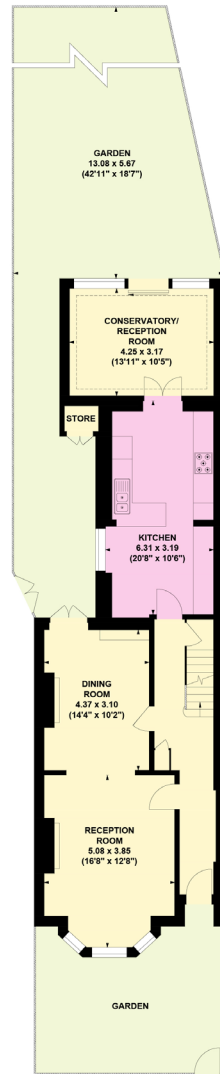


Mayfield Avenue, W4

Approximate Gross Internal Area : 205.88 Sq. metres
 (Including External Store) 2216 Sq. feet
 External Store : 0.75 Sq. metres
 8 Sq. feet

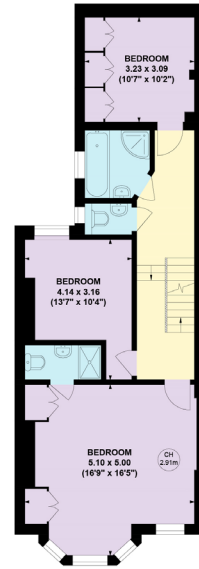


Key :
 CH - Ceiling Height

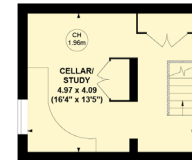


GROUND FLOOR

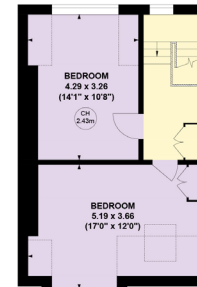
This plan is not to scale and must be used as layout guidance only. All measurements and areas are approximate and should not be relied upon to provide accurate information. This plan must not be relied upon when making property valuations, design considerations or any other such relevant decisions. We accept no responsibility or liability (whether in contract, tort or otherwise) in relation to any loss whatsoever arising from or in connection with any use of this plan or the adequacy, accuracy or completeness of it or any information within it.



FIRST FLOOR



LOWER GROUND FLOOR



SECOND FLOOR

Approximate Gross Internal Area = 205.88 sq m / 2216 sq ft

This plan is for layout guidance only. Not drawn to scale unless stated. Windows and door openings are approximate. Whilst every care is taken in the preparation of this plan, please check all dimensions, shapes and compass bearings before making any decisions reliant upon them. (ID767266)

We would be delighted
to tell you more.

Matthew Taylor
+44 2039276312
matthew.taylor@knightfrank.com

Chiswick Sales
64 Turnham Green Terrace
W4 1QN

[knightfrank.co.uk](https://www.knightfrank.co.uk)

Your partners in property

1. Particulars: These particulars are not an offer or contract, nor part of one. You should not rely on statements given by Knight Frank in the particulars, by word of mouth or in writing ("information") as being factually accurate about the property, its condition or its value. Neither Knight Frank nor any joint agent has any authority to make any representations about the property, and accordingly any information given is entirely without responsibility on the part of Knight Frank. 2. Material Information: Please note that the material information is provided to Knight Frank by third parties and is provided here as a guide only. While Knight Frank has taken steps to verify this information, we advise you to confirm the details of any such material information prior to any offer being submitted. If we are informed of changes to this information by the seller or another third party, we will use reasonable endeavours to update this as soon as practical. 3. Photos, Videos etc: The photographs, property videos and virtual viewings etc. show only certain parts of the property as they appeared at the time they were taken. Areas, measurements and distances given are approximate only. 4. Regulations etc: Any reference to alterations to, or use of, any part of the property does not mean that any necessary planning, building regulations or other consent has been obtained. A buyer must find out by inspection or in other ways that these matters have been properly dealt with and that all information is correct. 5. Fixtures and fittings: A list of the fitted carpets, curtains, light fittings and other items fixed to the property which are included in the sale (or may be available by separate negotiation) will be provided by the Seller's Solicitors. 6. VAT: The VAT position relating to the property may change without notice. 7. To find out how we process Personal Data, please refer to our Group Privacy Statement and other notices at <https://www.knightfrank.com/legals/privacy-statement>.

Particulars dated May 2026. Photographs and videos dated May 2026. All information is correct at the time of going to print. Knight Frank is the trading name of Knight Frank LLP. Knight Frank LLP is a limited liability partnership registered in England and Wales with registered number OC305934. Our registered office is at 55 Baker Street, London W1U 8AN. We use the term 'partner' to refer to a member of Knight Frank LLP, or an employee or consultant. A list of members names of Knight Frank LLP may be inspected at our registered office. If you do not want us to contact you further about our services then please contact us by either calling 020 3544 0692, email to marketing.help@knightfrank.com or post to our UK Residential Marketing Manager at our registered office (above) providing your name and address.