



Archway Road, N6

£650,000

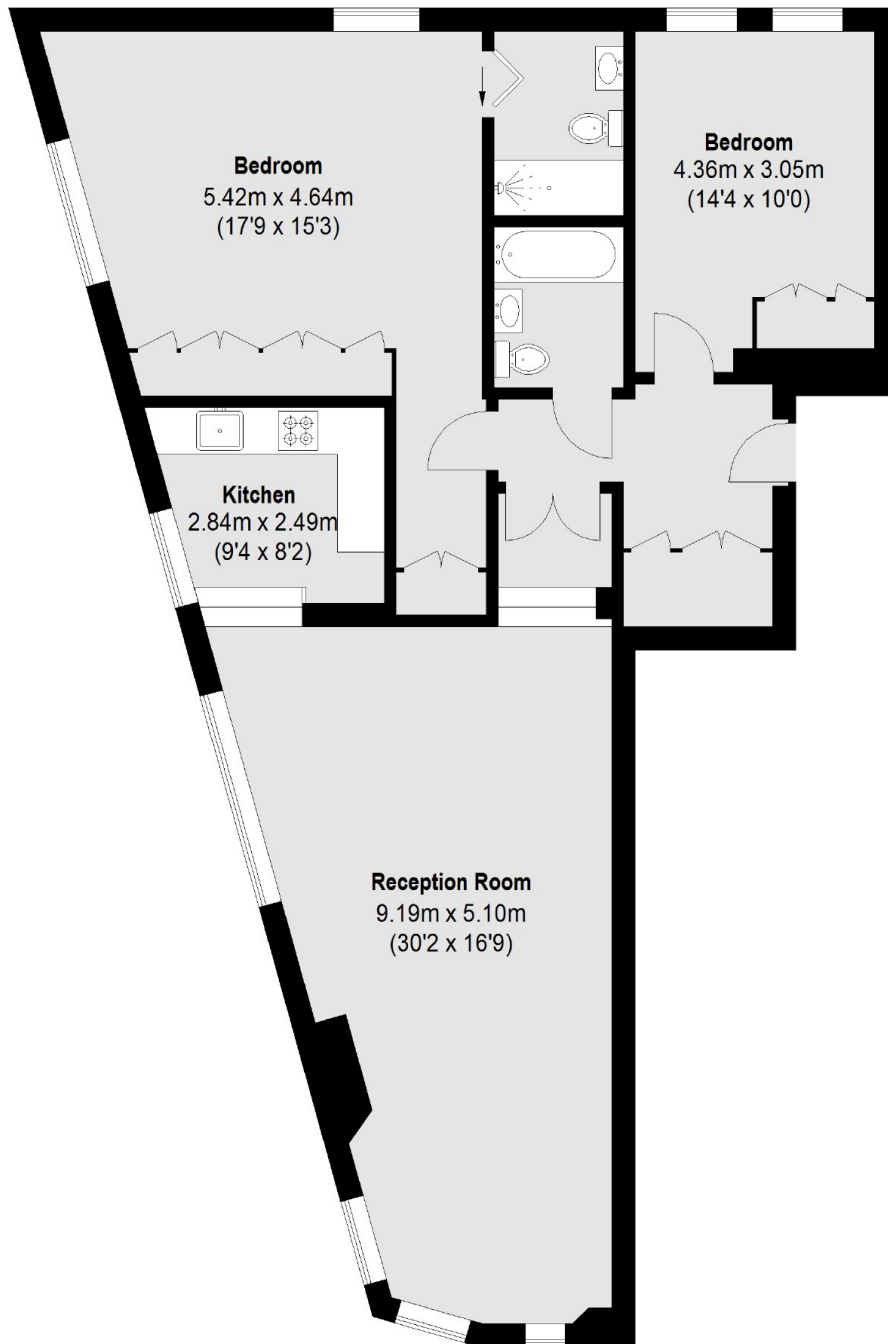
Converted from this landmark Victorian building, a superb two double bedroom apartment finished to a high standard with two bathrooms and an impressive 30 ft reception room.

Located just off Northwood Road with the green spaces of Parkland Walk and local shopping facilities close by, both Highgate and Archway underground stations are less than a mile away.

Features

- Two Double Bedrooms
- Large Reception
- Two Bathrooms
- Wooden Floors
- Lift
- Secure Gated Entrance

Archway Road, London, N6



Third Floor

Total area (approx.): 103.83 sq. m (1118 Sq. ft)