



## HORMEAD ROAD, W9

£850,000

A beautifully arranged three bedroom split level apartment offering bright, well-proportioned accommodation and exceptional outdoor space.

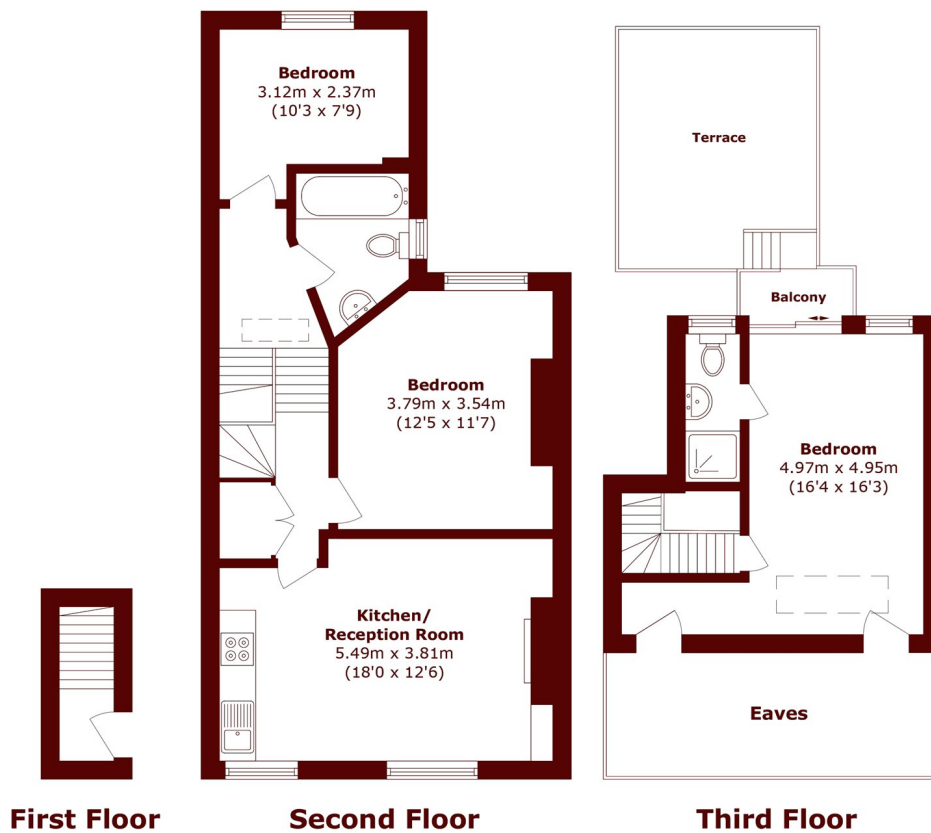
Three bedroom property  
Duplex Apartment  
Private Terrace

Opposite Grand Union Canal  
Walking distance to Portobello Road  
Chain free

@marshandparsons  
marshandparsons.co.uk

MARSH &  
PARSONS

# STEP INSIDE HORMEAD ROAD



Total area (approx.): 80.0 sq. m (861.1 sq. ft)  
(Excluding Eaves)  
Balcony area (approx.): 1.4 sq. m (15.0 sq. ft)  
Terrace area (approx.): 12.8 sq. m (137.7 sq. ft)

Little Venice  
020 7993 3050

Energy Rating: D We aim to make our particulars both accurate and reliable. However, they are not guaranteed; nor do they form part of an offer or contract. If you require clarification on any points then please contact us, especially if you're traveling some distance to view. Please note that appliances and heating systems have not been tested and therefore no warranties can be given as to their good working order

MARSH &  
PARSONS