



19 Oxford Close

, Peterlee, SR8 2EF

£127,000

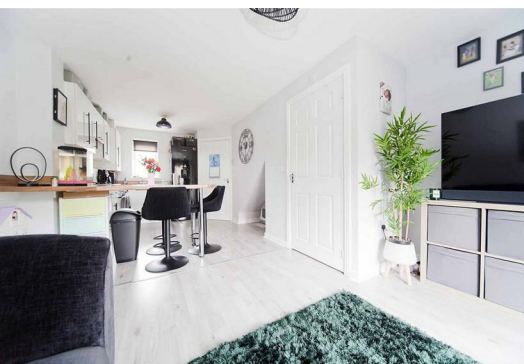


Welcome to this charming three-bedroom townhouse located on Oxford Close in Peterlee. This delightful property is an ideal first purchase for those looking to settle in a vibrant community. With no chain involved, the process of moving in can be smooth and straightforward.

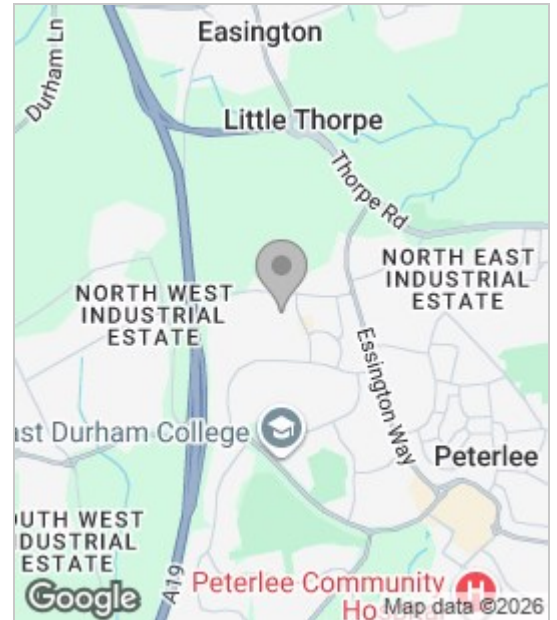
As you enter the home, you will be greeted by a beautifully decorated open-plan lounge and kitchen area, perfect for both relaxation and entertaining. The modern design creates a warm and inviting atmosphere, making it a wonderful space for family gatherings or quiet evenings in.

The property boasts a lovely rear garden, providing a private outdoor space for you to enjoy. Whether you wish to cultivate a garden, host summer barbecues, or simply unwind in the fresh air, this garden offers a versatile area to suit your needs. Additionally, the driveway ensures convenient off-street parking, a valuable feature in today's busy world.

Situated close to both primary and secondary schools, this home is ideal for families with children. The proximity to Peterlee town centre means that you will have easy access to a variety of shops, services, and amenities,



Area Map



Floor Plan



Energy Efficiency Graph



These particulars, whilst believed to be accurate are set out as a general outline only for guidance and do not constitute any part of an offer or contract. Intending purchasers should not rely on them as statements of representation of fact, but must satisfy themselves by inspection or otherwise as to their accuracy. No person in this firm's employment has the authority to make or give any representation or warranty in respect of the property.