



Oakwood Road, Westlea - SN5 7EF

Swindon

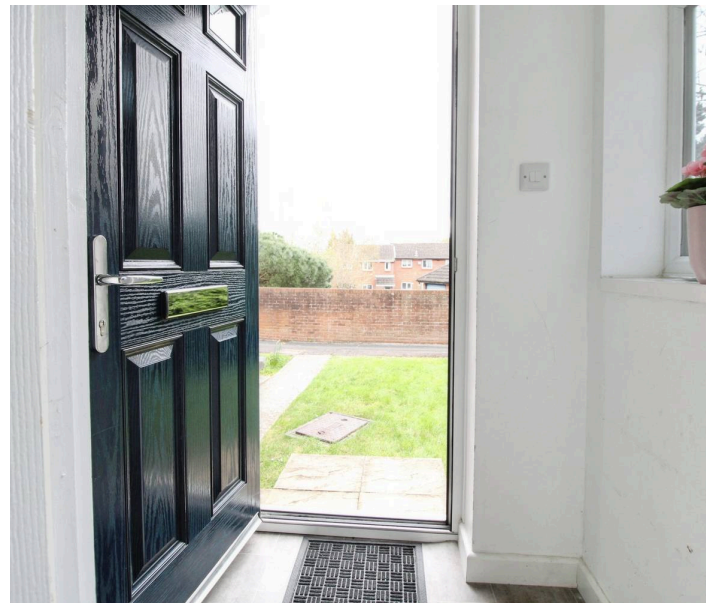
In Excess of **£230,000**

mcfarlane
property.com

Oakwood Road

Westlea, Swindon

- Two Bedroom End Terrace Home
- Garage + Parking
- Updated Throughout
- New Kitchen Dining Room
- Separate Living Room
- Two Bedrooms and Family Bathroom
- Enclosed Rear Gardens
- Access to West Swindon Amenities + Bus Routes and Transport



Oakwood Road

Westlea, Swindon

Council Tax band: B

Tenure: Freehold

EPC Energy Efficiency Rating: C

EPC Environmental Impact Rating: C

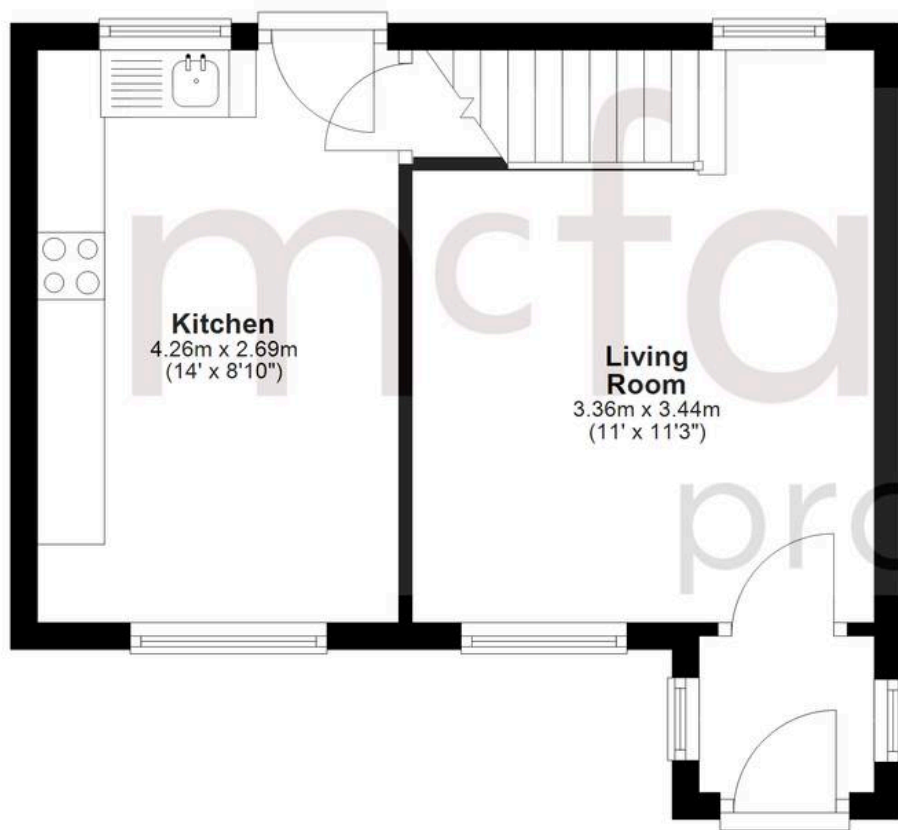


mcfarlane
property.com



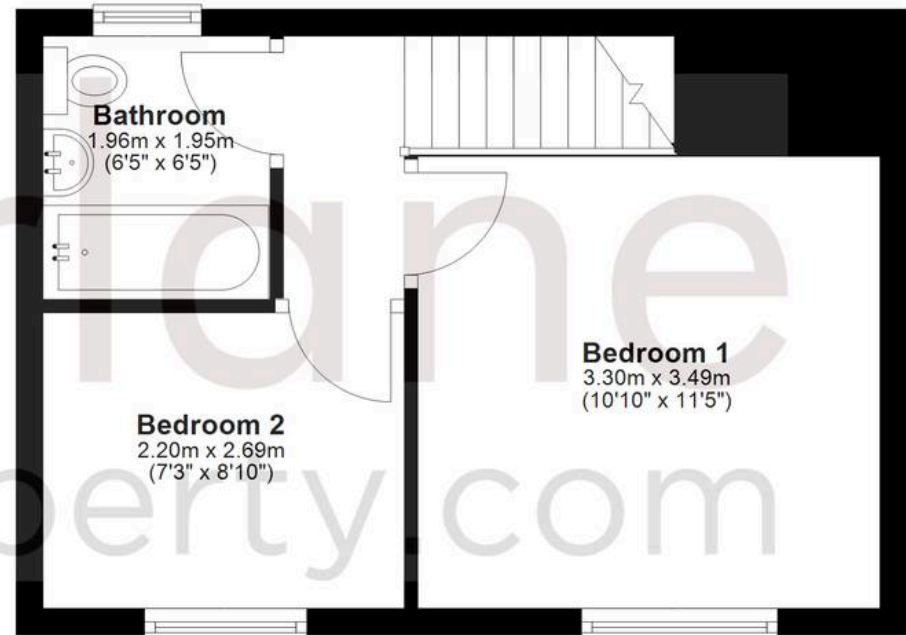
Ground Floor

Approx. 28.2 sq. metres (303.4 sq. feet)



First Floor

Approx. 27.0 sq. metres (290.6 sq. feet)



Total area: approx. 55.2 sq. metres (594.0 sq. feet)

Agents Note: Whilst every care has been taken to prepare these sales particulars, they are for guidance purposes only. All measurements are approximate and for general guidance purposes only and whilst every care has been taken to ensure their accuracy, they should not be relied upon and potential buyers are advised to recheck the measurements.