



Guide Price
£150,000

Leasehold

3x  1x  1x 

**Finch Road, Southsea,
Hampshire, PO4**

OVER 60?

Secure this property
for up to **59% less!**

cubitt & west
Helping you move forwards



Main features

- Chain free
- Spacious accommodation
- Ideal for families and investors
- Close to the beach
- Popular location

Accommodation

GROUND FLOOR

Entrance Hallway

Lounge: 15'1 x 11'0 (4.60m x 3.36m)

Kitchen: 16'3 x 8'8 (4.96m x 2.64m)

FIRST FLOOR

Landing

Bedroom 1: 14'7 x 8'6 (4.45m x 2.59m)

Bedroom 2: 11'6 x 8'6 (3.51m x 2.59m)

Bedroom 3: 10'5 x 6'3 (3.18m x 1.91m)

Bathroom

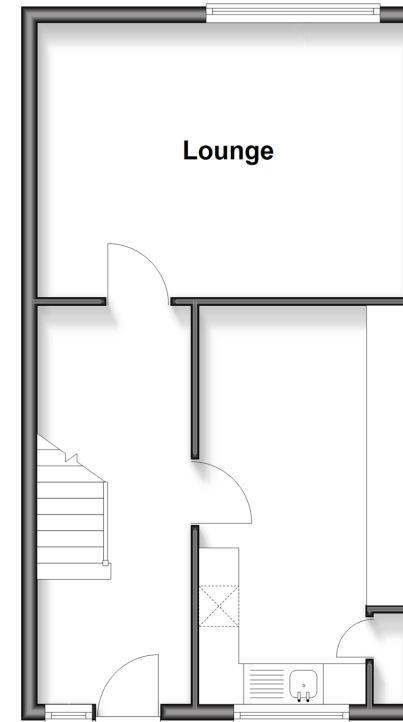
OUTSIDE

Communal Gardens

Resident Permit Parking

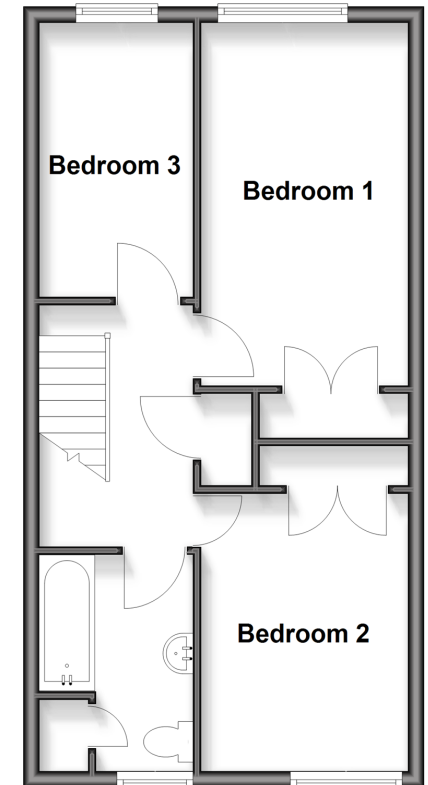
Ground Floor

Approx. 39.0 sq. metres (419.8 sq. feet)



First Floor

Approx. 42.9 sq. metres (461.8 sq. feet)



Call Southsea - 023 9229 6396 ■ cubittandwest.co.uk

- Legal advice should be taken to verify fixtures/fittings, planning, alterations and/or lease details
- Appliances & services are untested, dimensions are approximate and floor plans are not to scale
- Through a Homewise Home For Life Plan people aged 60+ can secure this property for up to 59% less, by purchasing a Lifetime Lease



42227626/20260108/JT/YH