



Worcester Close, SE20 | Guide Price £365,000

020 8702 9333

crystalpalace@pedderproperty.com

pedder
We live local



In General

- Two bedroom ground floor apartment
- Secure underground parking
- No onward chain
- Direct access to private patio
- Popular development
- Nearby multiple transport links

In Detail

****Guide Price: £365,000 - £380,000****

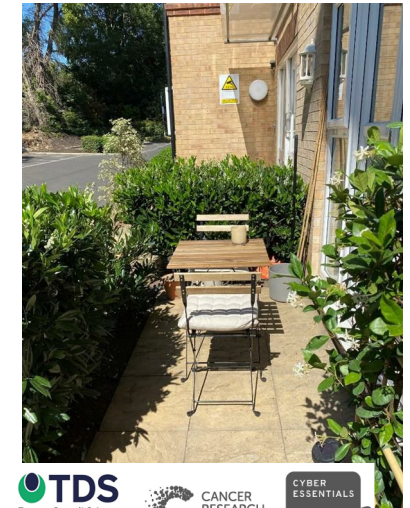
A smart two bedroom, two bathroom ground floor apartment forming a popular executive development moments from Crystal Palace Park and various transport options.

This fresh and inviting property is accessed via secure entry and boasts a 25ft living area which is socially open to a modern kitchen with space to dine. Both of the bedrooms are well proportioned, with the larger benefitting from an en suite shower room. A generous main bathroom is also great for busy households or guests. One of the highlights are double doors to a nicely cultivated patio area - perfect for a morning coffee or unwinding at the end of the day. Otherwise, secure underground parking is also available.

Worcester Close is a quiet residential location within easy reach of Anerley, Crystal Palace, and Penge West rail links. There are numerous amenities close by on Anerley Parade, and multiple shopping and leisure options on Crystal Palace Triangle.

NO ONWARD CHAIN.

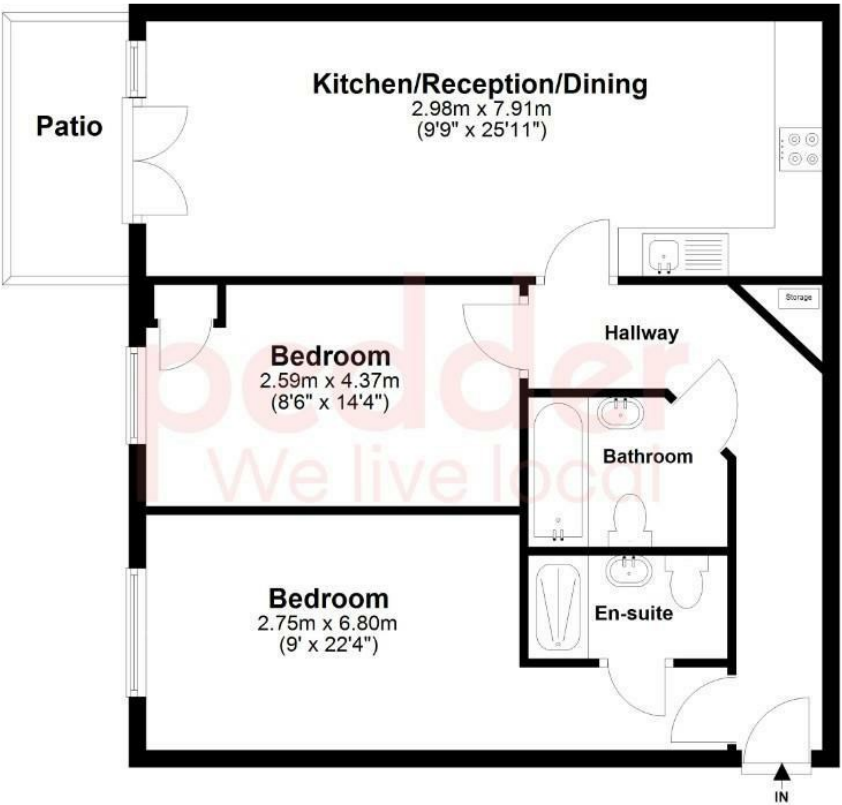
EPC: C | Council Tax Band: C | Lease: 110 Years remaining | SC: £2414.66 pa | GR: £340 pa | BI: TBC



Floorplan

Ground Floor

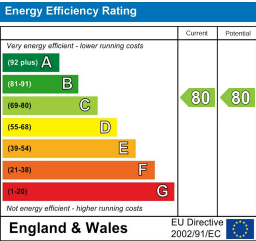
Approx. 67.4 sq. metres (725.4 sq. feet)



Total area: approx. 67.4 sq. metres (725.4 sq. feet)

Copyright www.pedderproperty.com 2024. These plans are for representation purposes only as Defined by RICS - Code of Measuring Practice. Not drawn to scale. windows and door measurements are approximate. please check dimensions, shapes and compass bearings before making any decisions reliant upon them.

Plan produced using PlanUp.



Pedder Property Ltd trading as Pedder for themselves and for the vendor/landlord of this property whose agents they are, give notice that (1) these particulars do not constitute any part of an offer or contract, (2) all statements contained within these particulars are made without responsibility on the part of Pedder or the vendor/landlord, (3) whilst made in good faith, none of the statements contained within these particulars are to be relied upon as a statement of representation or fact, (4) any intending purchaser/tenant must satisfy him/herself by inspection or otherwise as to the correctness of each of the statements contained within these particulars, (5) the vendor/landlord does not make or give either Pedder or any person in their employment any authority to make or give representation or warranty whatsoever in relation to this property.