



# CROFTS ESTATE AGENTS

PASSIONATE ABOUT PROPERTY

CLEETHORPES  
01472 200666

IMMINGHAM  
01469 564294

LOUTH  
01507 601550

SALES LETTINGS NEW HOME SALES LAND PROPERTY MANAGEMENT AUCTIONS FINANCIAL ADVICE AND MORTGAGES ENERGY PERFORMANCE PROVIDER



Grantham Avenue

Grimsby  
DN33 2HE

Guide Price £205,000

CLEETHORPES: 62 St Peters Avenue, Cleethorpes, DN35 8HP

IMMINGHAM: 21 Kennedy Way, Immingham, DN40 2AB

LOUTH: 3 Market Place, Louth, LN11 9NR

Email: Cleethorpes:

Email: Immingham :

Email: Louth :

[info@croftsestateagents.co.uk](mailto:info@croftsestateagents.co.uk)

[immingham@croftsestateagents.co.uk](mailto:immingham@croftsestateagents.co.uk)

[louth@croftsestateagents.co.uk](mailto:louth@croftsestateagents.co.uk)

[www.croftsestateagents.co.uk](http://www.croftsestateagents.co.uk)





### Property Introduction

#### £10,000 ALLOWANCE AVAILABLE!

Step into this beautifully updated semi-detached home that blends classic charm with fresh, contemporary style—perfectly placed in the heart of sought-after Scartho village. With shops, schools, pubs, and playing fields just a stroll away, the location is spot on for convenience and community. Inside, you'll find two inviting reception rooms: a stunning bay-fronted lounge with a multi-fuel stove, and a cosy rear living room warmed by a stylish log burner. The standout feature is the impressive family kitchen—bright, modern, and designed around a striking roof lantern that floods the space with natural light. Upstairs offers three well-proportioned bedrooms and a sleek, modern shower room. Outside, the home continues to impress with a front driveway and a generous rear garden, complete with a detached garage. Gas central heating and uPVC double glazing. A perfect mix of character, comfort, and contemporary living—ready to move straight into.

### Entrance Hallway

Offering composite entry door to the side elevation with two adjoining glazed windows. Stairs leading to the first floor.

### Lounge

13' 5" into bay x 13' 3" (4.092m x 4.044m)

The first of the reception rooms creates this pleasant living space with uPVC double glazed bay window to the front elevation. Neutrally decorated and having coving and rose to the ceiling.

Central heating radiator. A focal point of the lounge is created by the log stove set into the chimney breast with inset wood mantle over.

### Sitting Room

13' 11" x 13' 2" (4.245m x 4.002m)

Offering uPVC double glazed window to the side elevation, the second reception room offers a versatile living space. Central heating radiator. Useful understairs storage cupboard. Coving and rose to the ceiling. Once again a focal point of the room is created by the inset stove set into the chimney breast.

### Dining Kitchen

12' 6" x 12' 10" (3.817m x 3.902m)

A lovely sized and well appointed dining kitchen offering an ample array of fitted modern wall and base units with contrasting work surfacing with inset enamel sink and drainer. Space for a range oven with the freestanding range oven to be included within the asking price and having chimney extractor over. Integrated dishwasher, fridge and freezer. Plumbing for a washing machine. Down lighting. Column radiator. uPVC double glazed window to the side elevation, patio doors to the rear and a notable feature of a roof lantern allowing for ample natural light to brighten the area.

### First Floor Landing

Access to the bedrooms and shower room.

### Bedroom One

10' 4" x 13' 3" (3.140m x 4.048m)

The first of the bedroom is the main bedroom located to the front of the property. uPVC double glazed window and a central heating radiator.

### Bedroom Two

8' 0" x 12' 0" maximum (2.432m x 3.652m)

uPVC double glazed window to the side elevation. Central heating radiator. Storage cupboard located over the stairwell.

### Bedroom Three

9' 1" x 10' 0" (2.773m x 3.037m)

uPVC double glazed window to the side elevation. Central heating radiator.

### Shower Room

4' 10" minimum x 12' 10" (1.464m x 3.923m)

Modern shower room with walk in shower, vanity wash hand basin and close coupled w.c. Chrome effect central heating towel radiator. Fitted extractor fan. uPVC double glazed window to the rear elevation.

### Outside

The property offers a lawned front garden with driveway creating ample off road parking and leading down to side gates and onto a detached garage. The rear garden offers a low maintenance garden with lawn and patio area. Brick detached garage with light and power.

### Tenure

Believed to be Freehold, awaiting solicitors' formal confirmation. All interested parties are advised to make their own enquiries.

### Services

All mains services are understood to be connected, however Crofts have not inspected or tested any of the services or service installations & purchasers should rely on their own survey.

### Broadband and Telecom Communications

Broadband and mobile speeds and availability can be assessed via the Ofcoms checker website.

<https://www.ofcom.org.uk/phones-and-broadband/coverage-and-speeds/ofcom-checker>

### Viewings

Please contact the relevant marketing office, all viewings are strictly by appointment only please.

### Council Tax Information

Band C: To confirm council tax banding for this property please view the website [www.voa.gov.uk/cti](http://www.voa.gov.uk/cti)

### Free Valuations

We offer a free valuation with no obligation, just call the relevant office or visit [www.croftsestateagents.co.uk](http://www.croftsestateagents.co.uk) seven days a week to arrange for your free valuation.

### Property Management

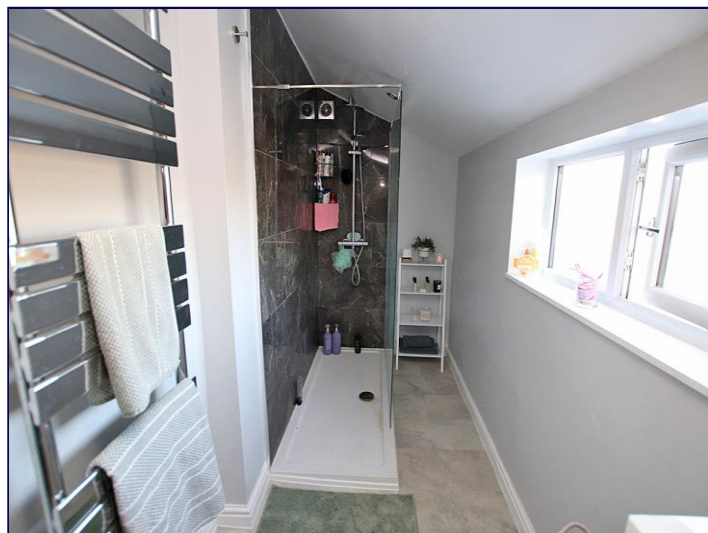
We offer a full property management service, offering full and comprehensive credit and referencing checks detailed photographic inventories and regular property inspections to name just a few of our services.

### Mortgage and Financial Advice

With access to a wide range of mortgages from over 50 of the UK's best-known lenders, **Crofts Estate Agents**, in partnership with **Forge Financial Solutions**, can help you find the mortgage that best suits your needs.

**Forge Financial Solutions** will act on your behalf, providing expert advice on mortgages and other financial matters, ensuring you receive tailored guidance and support throughout the process.

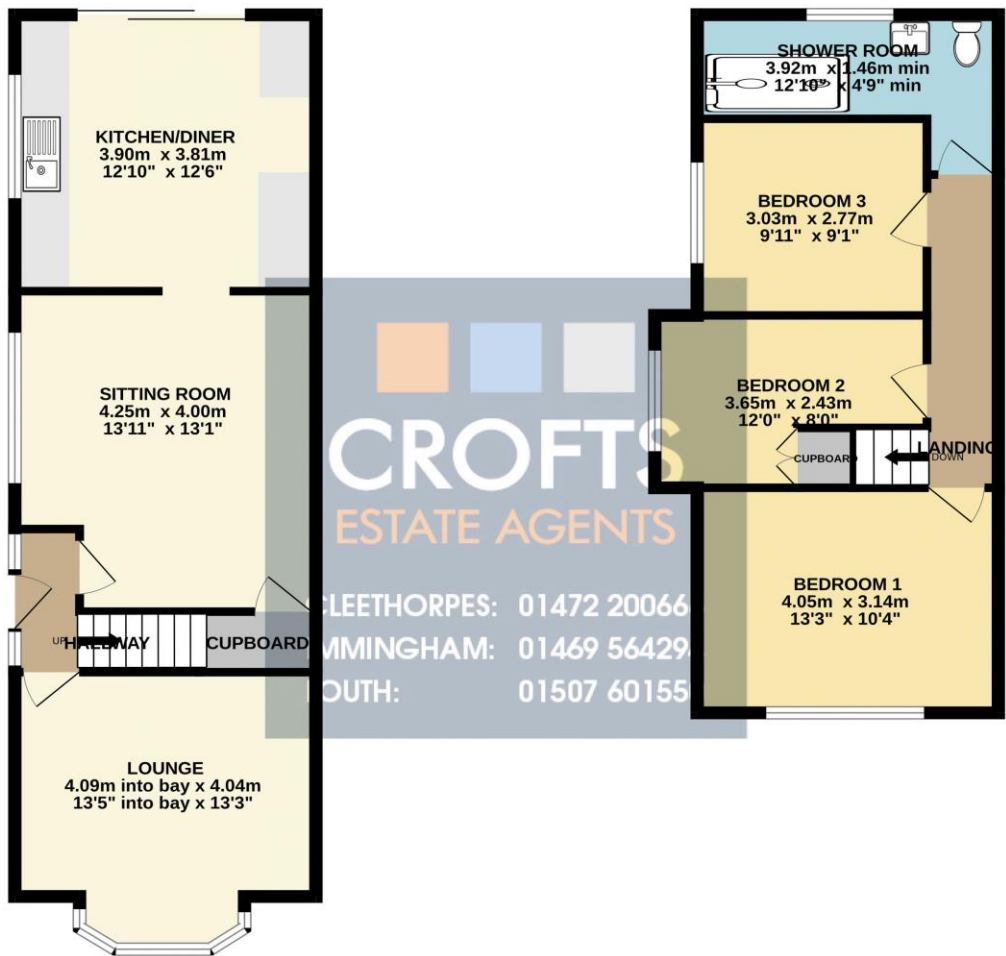
**STATUTORY NOTICE: YOUR HOMES IS AT RISK IF YOU DO NOT KEEP UP REPAYMENTS ON A MORTGAGE OR OTHER LOAN SECURED ON IT.**





GROUND FLOOR

1ST FLOOR



Whilst every attempt has been made to ensure the accuracy of the floorplan contained here, measurements of doors, windows, rooms and any other items are approximate and no responsibility is taken for any error, omission or mis-statement. This plan is for illustrative purposes only and should be used as such by any prospective purchaser. The services, systems and appliances shown have not been tested and no guarantee as to their operability or efficiency can be given.  
Made with Metropix ©2025

Score	Energy rating	Current	Potential
92+	A		
81-91	B		
69-80	C		79 C
55-68	D	67 D	
39-54	E		
21-38	F		
1-20	G		

**DISCLAIMER - IMPORTANT NOTICE REGARDING SALES PARTICULARS** Although we have taken great care to insure the accuracy of the information contained in these particulars, we specifically deny liability for any mistakes, omissions or errors and strongly advise that all proposed purchasers should satisfy themselves by inspection or otherwise, as to their correctness, prior to entering into any commitment to purchase. In particular any information provided in respect of tenure, council tax, rateable values etc has been given in good faith and whilst believed to be correct, may be subject to amendment. Any references to the condition, use or appearance of the property are made for guidance only, and no warranties are given or implied by this information. It is not Crofts policy to check the position with regards to any planning permission or building regulation matters and as such all interested parties are advised to make their own enquires, in order to ensure that any necessary consents have been obtained. All measurements are approximate and are for guidance only and cannot be relied upon. Measurements are taken from wall to wall unless otherwise stated, with the metric conversion shown in brackets. Any plans or maps contained are for identification purpose only, and are not for any other use but guidance & illustration. Crofts have not tested any apparatus, equipment, fixtures, fittings or services including central heating systems and cannot therefore verify that they are in working order, or fit for their intended purpose. These details do not form any part of any contract, and unless specifically stated otherwise, furnishings and contents are not included within this sale.