



**HENDERSON
CONNELLAN**

ESTATE AGENTS

“Delightful Level Living!”

Situated in an established location and with a delightful rear garden, this impressive and detached bungalow boasts generous proportions throughout, three bedrooms, off road parking and a garage!



Rainsborough Gardens
Market Harborough
LE16 9LN





Conveniently located with a bus stop very close by, leading into the town centre and beyond. The local shops on Western Avenue are also within walking distance, as is the doctors surgery or a short drive into town.

Entrance through the uPVC front door leading into the inviting entrance hall with access to all rooms and the attic via a hatch.

Spacious living/dining room benefitting from laminate flooring, a large front aspect window flooding the space with natural light, and a feature gas fireplace adding a focal point to the room.

Modern kitchen comprising vinyl flooring, eye and base level fitted units, metro tiled walls, a stainless-steel sink with drainage board, a freestanding electric cooker with a four-ring electric hob, and space for a washing machine, dishwasher and fridge/freezing.

Three good sized bedrooms, two of which are double in size with the main bedroom benefitting from double doors through to the conservatory.

Light and airy conservatory boasting laminate flooring, central heating and French doors opening out to the garden.

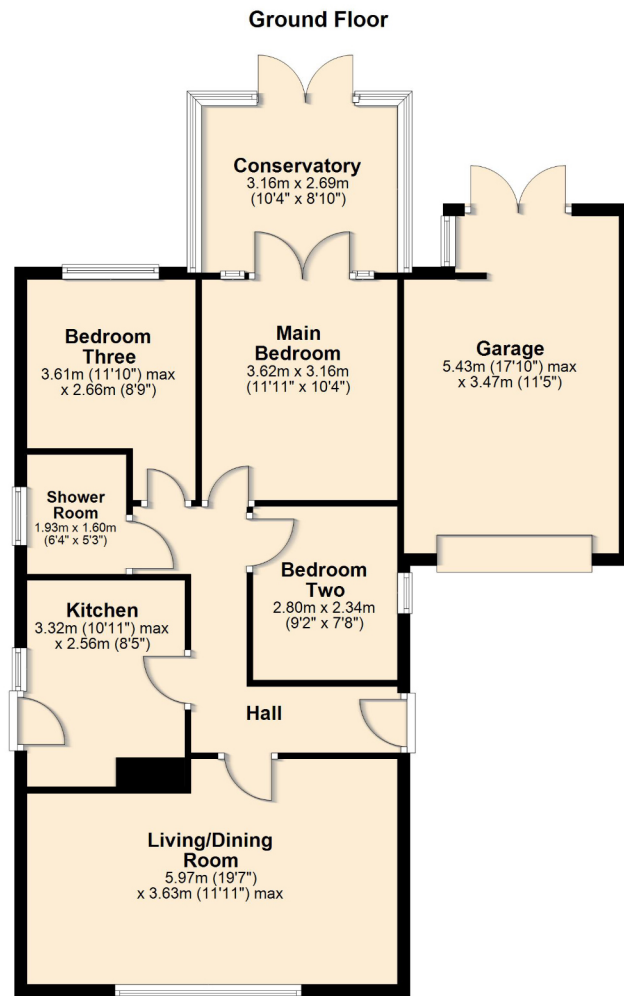


Separate single garage, slightly wider than a standard single garage with an electric up and over door, rear double doors, and a sidelight window.

The property features a neat and attractive frontage, benefitting from a low maintenance design with a large, gravelled area and a paved driveway leading mg to the single garage, providing off road parking for two cars.

The delightful rear garden is of a good size and features a paved patio offering multiple places to sit out and enjoy the best of the morning sun. A lawn area provides a touch of greenery, and two timber sheds add additional storage. A paved path leads to a further patio at the rear, perfectly placed to get the afternoon sun.





*Although great care has been taken to create an accurate floorplan, it is for visual representation only and does not represent exact proportions.



Henderson Connellan, 63 High Street,
Market Harborough, LE16 7AF

01858 410400
marketharboroughsales@hendersonconnellan.
co.uk



hendersonconnellanmh