



Goldsmid Road, Hove, BN3 1QA

£325,000



Property Type: Ground Floor Flat

Bedrooms: 2

Bathrooms: 1

Receptions: 1

Tenure: Leasehold

Council Tax Band: A

- Chain Free.
- Front Patio.
- Two Double Bedrooms.
- Large Bathroom Shower.
- Moments Away From Seven Dials Cafes & Restaurants.
- Very Close To Brighton Mainline Station.
- Modernized Throughout.
- Separate Toilet.
- Original Victorian Features Throughout.
- Open-Plan Kitchen / Living / Dining room

Jacobs Steel Are Delighted To Present This Two Double Bedroom Victorian Ground Floor Flat Chain Free In The Heart Of Seven Dials. Moments Away From Local Cafe's And Restaurants And Brighton Mainline Station.



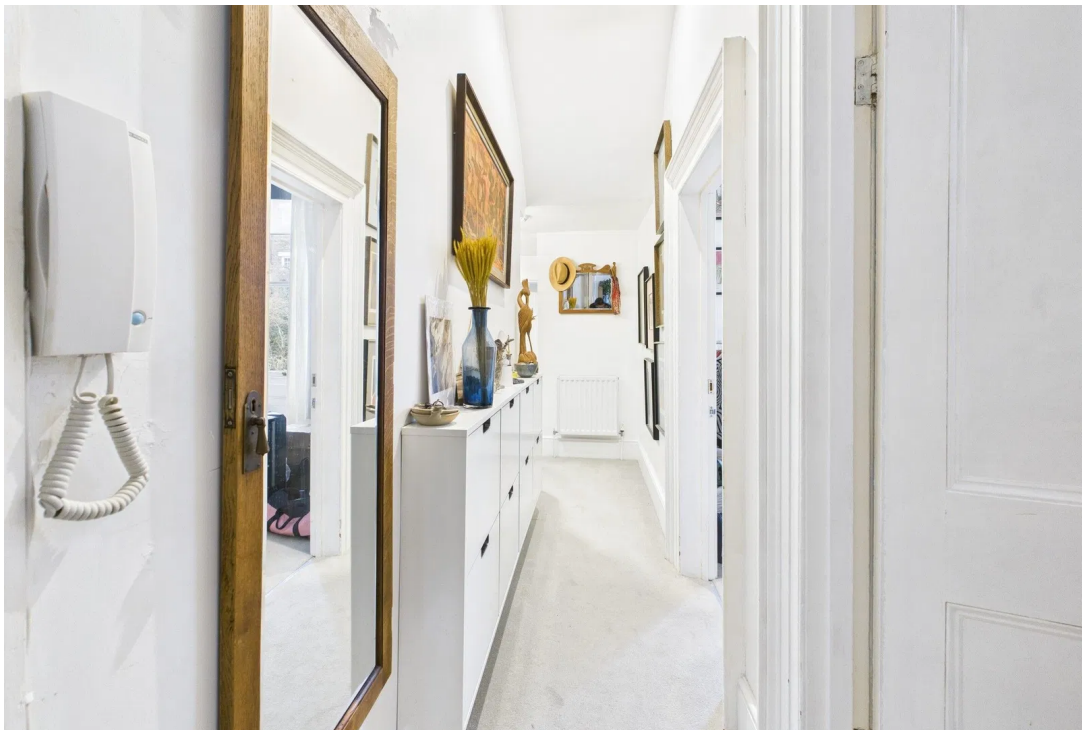


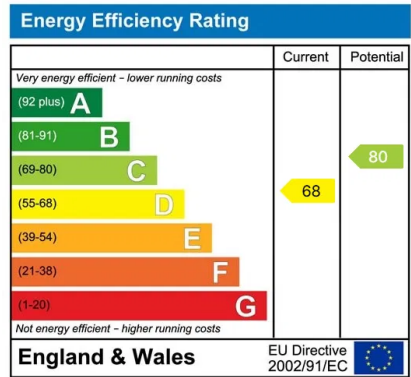
Offered chain free, this beautifully presented two double bedroom ground floor flat enjoys an enviable position just moments from the vibrant heart of Seven Dials and within easy walking distance of Brighton Station. The property is maintained in good cosmetic order throughout, offering a stylish and comfortable home in one of Brighton & Hove's most desirable neighborhoods.

The flat features a striking open-plan kitchen, living and dining area, designed to maximize space and natural light. The contemporary floor-to-ceiling fitted kitchen is seamlessly integrated into the living space, creating an elegant and sociable environment perfect for modern living and entertaining.

Both double bedrooms are generously proportioned and offer versatile, light-filled spaces. The property also benefits from a large, modern bathroom featuring a bath with overhead shower, providing both style and practicality.

Set on Goldsmid Road, the flat is moments from Seven Dials' main shops, independent cafés and popular restaurants, while Brighton Station is within easy walking distance, offering excellent commuter links. The seafront, city center and green open spaces are also close at hand.





Whilst we endeavour to make our properties particulars accurate and reliable, we have not carried out a detailed survey. If there is any point which is of particular importance to you, please contact the office and we will be pleased to check the information for you, particularly if you are contemplating travelling some distance. Whilst every effort has been made to ensure that any floorplans are correct and drawn as accurately as possible, they are to be used for layout and identification purposes only and are not drawn to scale. The services, where applicable, including electrical equipment and other appliances have not been tested and no warranty can be given that they are in working order, even where described in these particulars. Carpets, curtains, furnishing, gas fires, electrical goods/ fittings or other fixtures, unless expressly mentioned, are not necessarily included with the property.