

**LONDON  
VICTORIA  
GROUPS** 



## Heritage Tower, 118 East Ferry Road

, London E14 3PT

- Crossharbour Station
- 24 hour concierge
- Bike storage
- CTB-E
- Residents gym
- Spacious reception room
- EPC-B

**£2,500 Per Month**

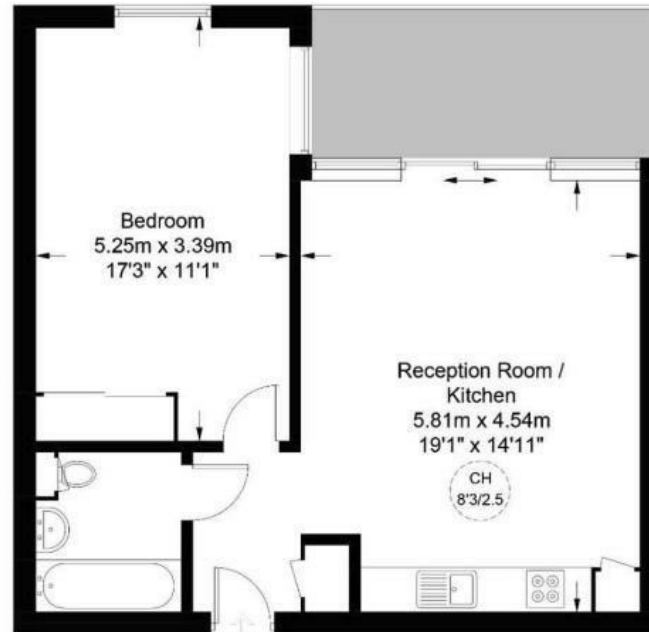


Local Authority **Tower Hamlets**  
Council Tax Band **E**  
EPC Rating **B**



## Heritage Tower, E14

Approximate Gross Internal Area = 588 sq ft / 54.6 sq m



### Seventeenth Floor

#### London Office Office

Spaces Victoria, 25 Wilton Road, Pimlico,  
London, SW1V 1LW

#### Contact

020 3084 3094  
XL@londonvictoriagroups.co.uk  
www.londonvictoriagroups.co.uk

Agents Note: Whilst every care has been taken to prepare these particulars, they are for guidance purposes only. All measurements are approximate and for general guidance purposes only and whilst every care has been taken to ensure accuracy, they should not be relied upon and potential buyers/tenants are advised to recheck the measurements.

