



# SOUL ESTATES

## SALES & LETTINGS

### TO LET - 3 Bedroom House

**Ramsey Close, West Bromwich, B71**

**£1,100 PCM**

Soul Estates are proud to present this well presented 3 bedroom Mid-terrace house To Let. This perfect family home is situated in a very popular area of West Bromwich. Situated close to the motorway network and within easy reach of West Bromwich centre and Great Barr.

The property offers an entrance hallway which leads to double doors to the spacious lounge and dining room which looks over the rear garden. The ground floor also includes a family kitchen with and downstairs WC and storage. Kitchen with a range of wall and base units to match, splashback tiling, gas hob with an electric such oven with appliances as Fridge freezer and washing machine.

Stairs leading to the first-floor landing which leads off to, three bedrooms and a family bathroom. The property also benefits from gas central heating and double glazing, low maintenance front and rear garden with off-road parking.

✓ **3 BEDROOM MID-TERRACE HOUSE**

✓ **PERFECT FAMILY HOME IN WEST BROMWICH**

✓ **SPACIOUS LOUNGE WITH DINING ROOM**

✓ **FAMILY BATHROOM**











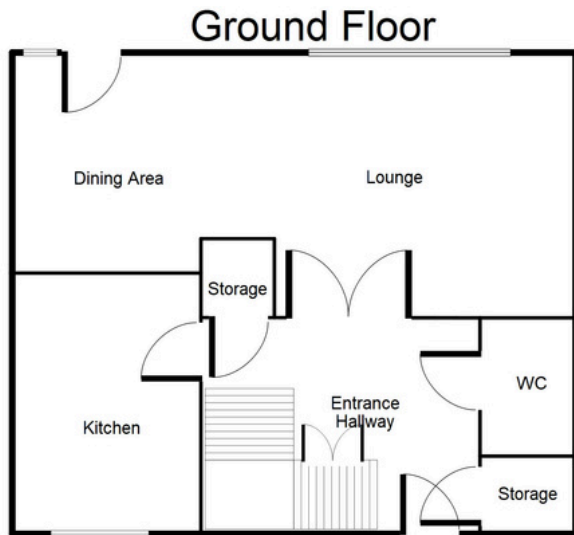
# SOUL ESTATES

## SALES & LETTINGS

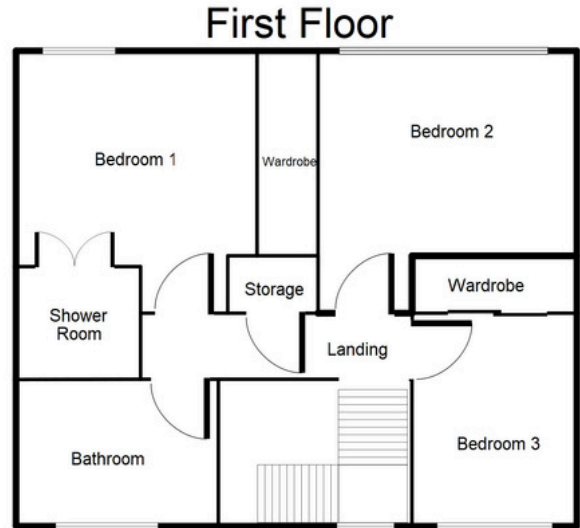
### TO LET - 3 Bedroom House

Ramsey Close, West Bromwich, B71

£1,100 PCM



This floorplan is just an example, this is not to scale.  
Please see description for exact room sizes.  
(c) Soul Estates



This floorplan is just an example, this is not to scale.  
Please see description for exact room sizes.  
(c) Soul Estates

#### Entrance Hallway

8' 6" x 9' 11" (2.59m x 3.02m)

#### Lounge/ Dining Area

13' 9" x 21' 1" (4.19m x 6.42m)

#### Kitchen

11' 4" x 7' 9" (3.45m x 2.36m)

#### WC

6' 7" x 2' 10" (2.01m x 0.86m)

#### First Floor Landing

8' 3" x 9' 10" (2.51m x 2.99m)

#### Bedroom 1

13' 10" x 10' 6" (4.21m x 3.20m)

#### Shower Room

4' 9" x 5' 1" (1.45m x 1.55m)

#### Bedroom 2

13' 10" x 10' 4" (4.21m x 3.15m)

#### Bedroom 3

9' 10" x 5' 8" (2.99m x 1.73m)

#### Family Bathroom

5' 5" x 7' 11" (1.65m x 2.41m)



# SOUL ESTATES

## SALES & LETTINGS

### CONTACT US

Soul Estates  
20 Great Bridge  
Tipton  
DY4 7HA

0121 647 6779

[www.soulestates.co.uk](http://www.soulestates.co.uk)