



Clare Road, TW4

£499,950

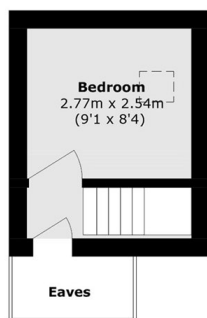
Offered to the market with no onward chain is this four bedroom end of terrace house located in a popular and sought after residential location. Arranged over three floors and offering more than 1,075 square feet of generous living space, further benefits include a front reception room, kitchen/dining room, two bathrooms and a generous west-facing garden (with outside shed).

Clare Road is ideally located close to excellent primary and secondary schools, with Ofsted outstanding rated St. Michael & St. Martin's school close by. Fantastic transport links: including a few minutes walk to buses to Heathrow and a wide range of areas, Hounslow West Underground and Hounslow Rail station are close by and easy access to the A4/M4 to London and Heathrow. Hounslow High Street is also nearby which hosts a variety of shops, restaurants and cinema.

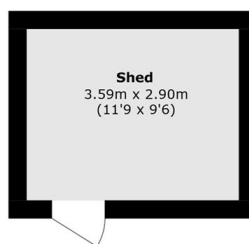
Features

- End of Terrace House
- Four Bedrooms
- Two Bathrooms
- West Facing Garden
- Popular Location
- No Chain

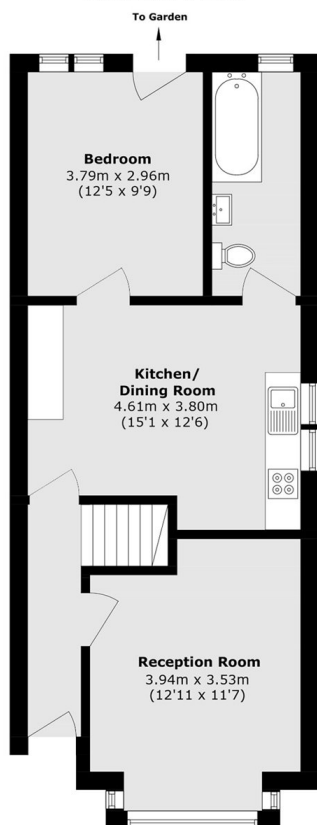
Clare Road, Hounslow, TW4



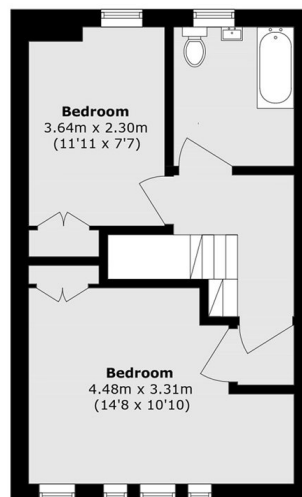
Second Floor



Ground Floor



Ground Floor



First Floor

Total area (approx.): 99.9 sq. m (1075.3 sq. ft)
(Excluding Eaves)
Outbuilding area (approx.): 10.4 sq. m (111.9 sq. ft)