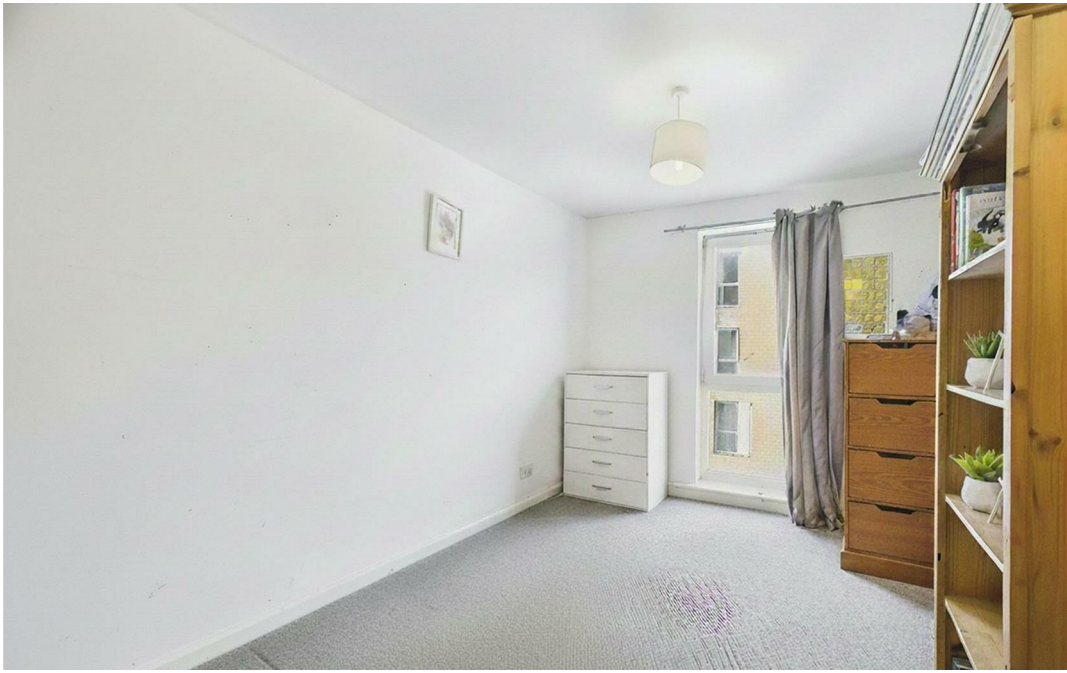




**JUPITER COURT, CAMERON CRESCENT,
EDGWARE HA8 0FN**

**£274,950
Leasehold**

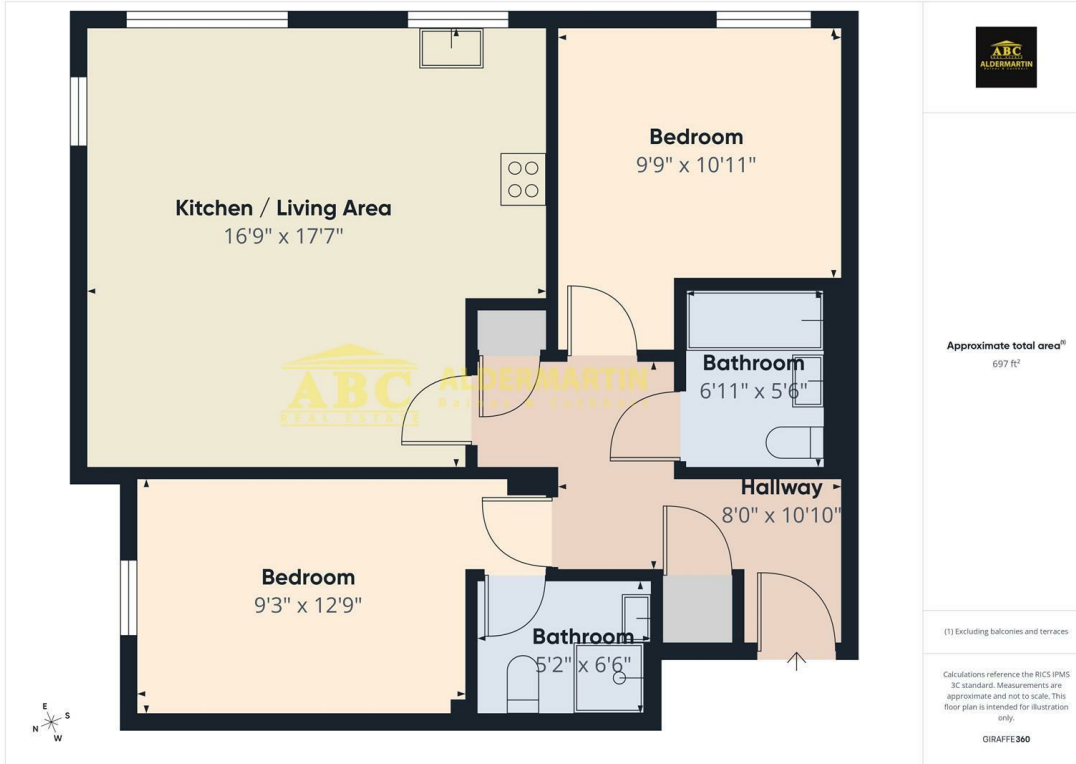




- 2 BEDROOM FLAT
- EPC RATING B - TAX BAND D
- COMMUNAL GARDENS

- 2 BATHROOMS
- LIFT TO SECOND FLOOR
- CLOSE TO SHOPS & TRANSPORT

- ALLOCATED PARKING SPACE.
- 106 YEAR LEASE
- SERVICE CHARGES £2,705 PER YEAR



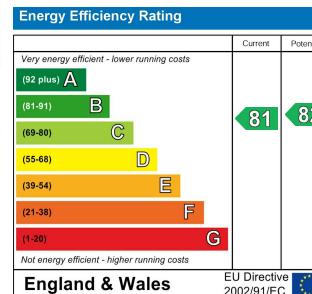
ABC ALDERMARTIN

Approximate total area¹⁾
697 ft²

(1) Excluding balconies and terraces

Calculations reference the RICS IPMS 3C standard. Measurements are approximate and not to scale. This floor plan is intended for illustration only.

GIRAFFE 360



Welcome to this charming flat located on Cameron Crescent in the desirable area of Edgware. This modern property, built in 2010, offers a comfortable living space of 764 square feet, making it an ideal choice for individuals or small families seeking a contemporary home. Upon entering, you will find a well-appointed reception room that provides a warm and inviting atmosphere, perfect for relaxation or entertaining guests. The flat boasts two spacious bedrooms, each designed to offer a peaceful retreat at the end of the day. With two bathrooms, including an en-suite, convenience and privacy are assured for all residents.

The property benefits from allocated parking, a valuable feature in this bustling area, ensuring that you always have a secure place for your vehicle. Additionally, the presence of a lift in the block enhances accessibility, making it suitable for all ages.

Cameron Crescent is situated in a vibrant community, with local amenities, shops, and transport links within easy reach. This flat presents an excellent opportunity for those looking to enjoy modern living in a well-connected location. Do not miss the chance to make this delightful property your new home.

ABC Hendon Sales
020 8621 4000
www.abcestates.co.uk

