



Price
£700,000

Freehold

3x  1x  1x 

**Carnarvon Road, Leyton,
E10**

 **DOUGLAS
ALLEN**
Helping you move forwards



Main features

- Striking Victorian terraced property
- Double lounge & modern kitchen
- Landscaped rear garden
- Family bathroom & ground floor w/c
- Close to Walthamstow Village and several schools
- Excellent transport links

Accommodation

GROUND FLOOR

Lounge: 13'2 x 11'3 (4.02m x 3.43m)

Dining Area: 11'3 x 10'6 (3.43m x 3.20m)

Kitchen: 13'1 x 9'8 (3.99m x 2.95m)

Cloakroom

FIRST FLOOR

Bedroom 1: 14'5 x 12'6 (4.40m x 3.81m)

Bedroom 2: 12'7 x 9'2 at widest point (3.84m x 2.80m)

Bedroom 3: 12'7 x 9'2 (3.84m x 2.80m)

Bathroom

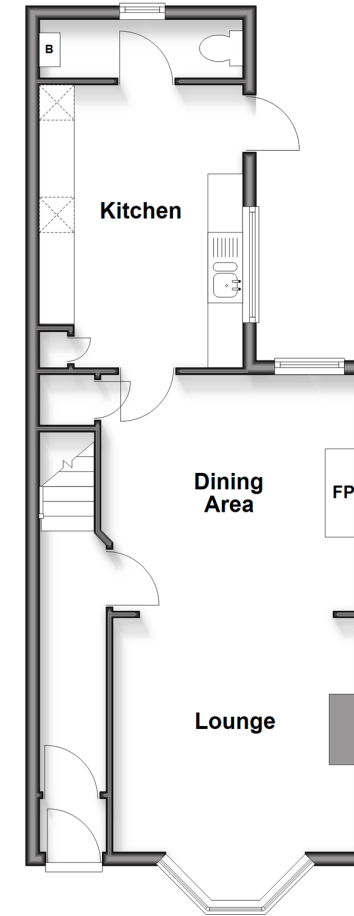
OUTSIDE

Front Garden

Rear Garden

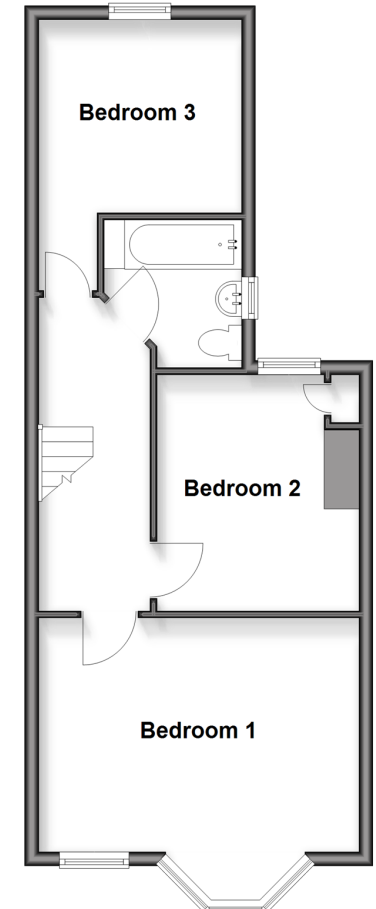
Ground Floor

Approx. 46.1 sq. metres (495.7 sq. feet)



First Floor

Approx. 46.1 sq. metres (495.7 sq. feet)



Unable to display material information. Please check with the branch for material information details for this property



53118039/20260418/KS/SC