



GREENFIELD
EST. 1985



35 Wickham Avenue, Cheam - SM3 8DU

35 Wickham Avenue

Cheam

- Extended 1930's classic semi
- Scope to further extend to side & rear (STPP)
- Attached garage with large store/utility/laundry behind
- Downstairs cloakroom
- 25' lounge
- Generous rear garden
- Immaculate stylish decor
- Vendors suited

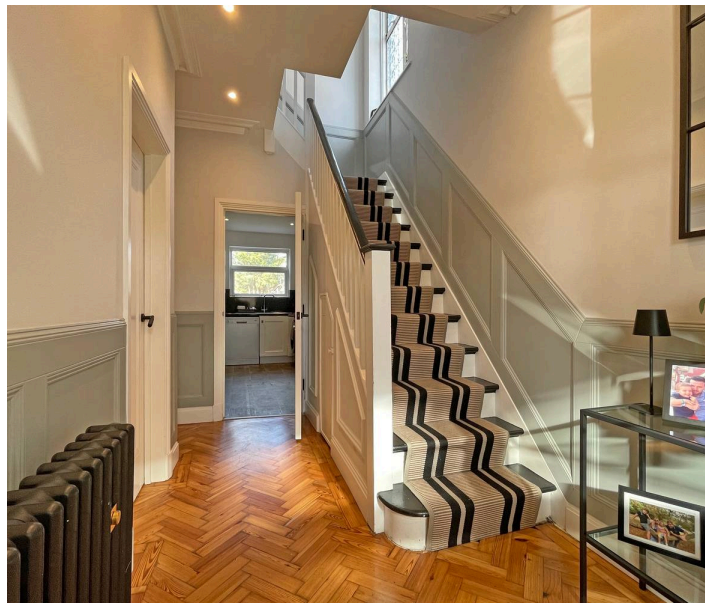
EXTENDED 3 BED SEMI WITH FURTHER SCOPE TO EXTEND (STPP) - Step inside this charming extended 3-bedroom semi-detached house that exudes classic 1930s vibes with a modern twist. The extended property boasts an attached garage leading to a large store (perfect for storage or potentially a utility/laundry room) and a convenient downstairs cloakroom.

Enjoy the spacious 25' lounge ideal for relaxing evenings or hosting friends.

The property features an exceptionally large rear garden waiting to be transformed into your private oasis. Step into immaculate, stylish decor that complements the character of the home.

Council Tax band: F

Tenure: Freehold



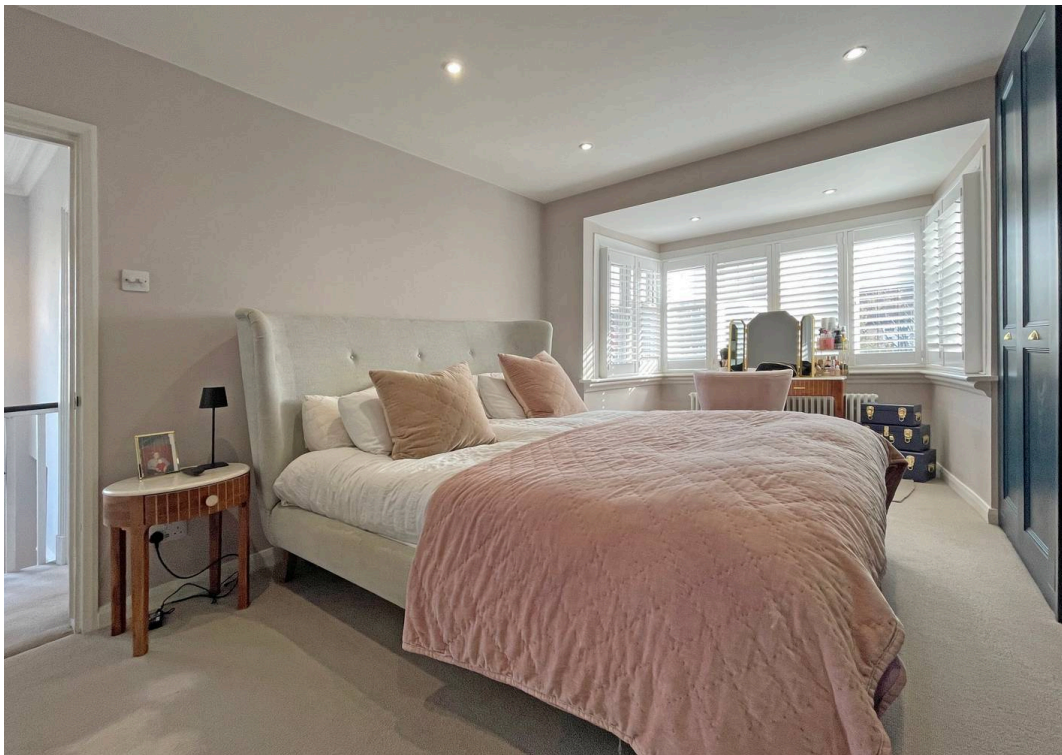


35 Wickham Avenue

Cheam, Sutton

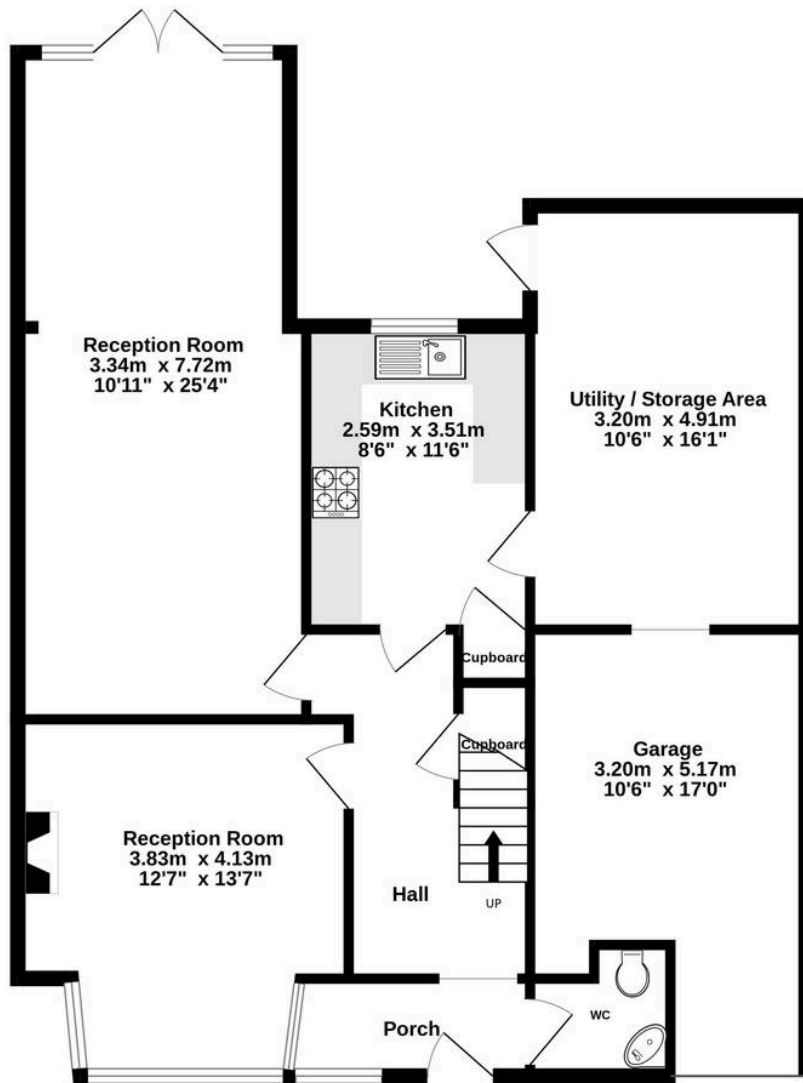
SPACIOUS 3 BED SEMI IN SOUGHT AFTER CHEAM AVENUE - Situated close to Nonsuch Park is this classic 1930's semi detached home, extended to the ground floor, offered in excellent order, offering larger than average accommodation with ample driveway parking, attached garage and large utility/store room - Scope to further extend (STPP)



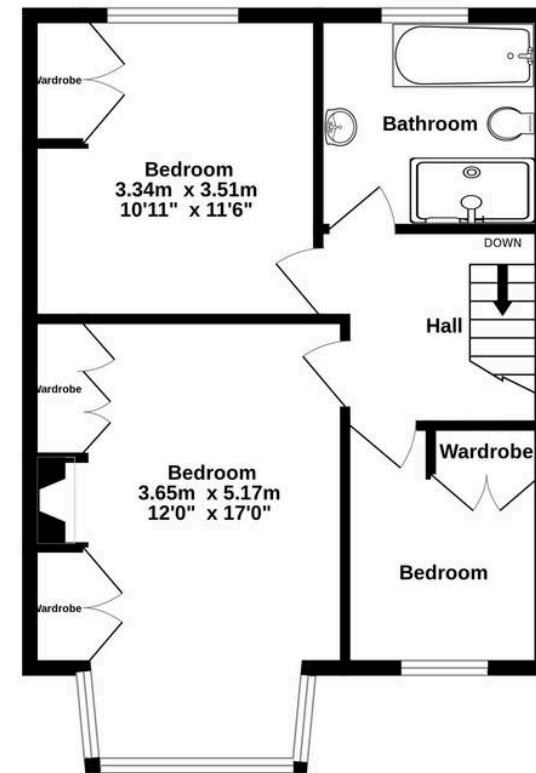




Ground Floor
92.5 sq.m. (996 sq.ft.) approx.



1st Floor
47.2 sq.m. (508 sq.ft.) approx.



TOTAL FLOOR AREA : 139.7 sq.m. (1504 sq.ft.) approx.

Whilst every attempt has been made to ensure the accuracy of the floorplan contained here, measurements of doors, windows, rooms and any other items are approximate and no responsibility is taken for any error, omission or mis-statement. This plan is for illustrative purposes only and should be used as such by any prospective purchaser. The services, systems and appliances shown have not been tested and no guarantee as to their operability or efficiency can be given.

Made with Metropix ©2025



Greenfield Estate Agents – Ewell Village

Greenfield Estate Agents 55 High Street, Epsom – KT17 1RX

02083930077 • property@greenfieldewell.co.uk • www.greenfieldewell.co.uk/

