



JUPITER HOUSE, E16

£2,050 pcm

Two bedroom two bathroom apartment with private courtyard facing balcony. Residents benefit from 24 hour concierge.

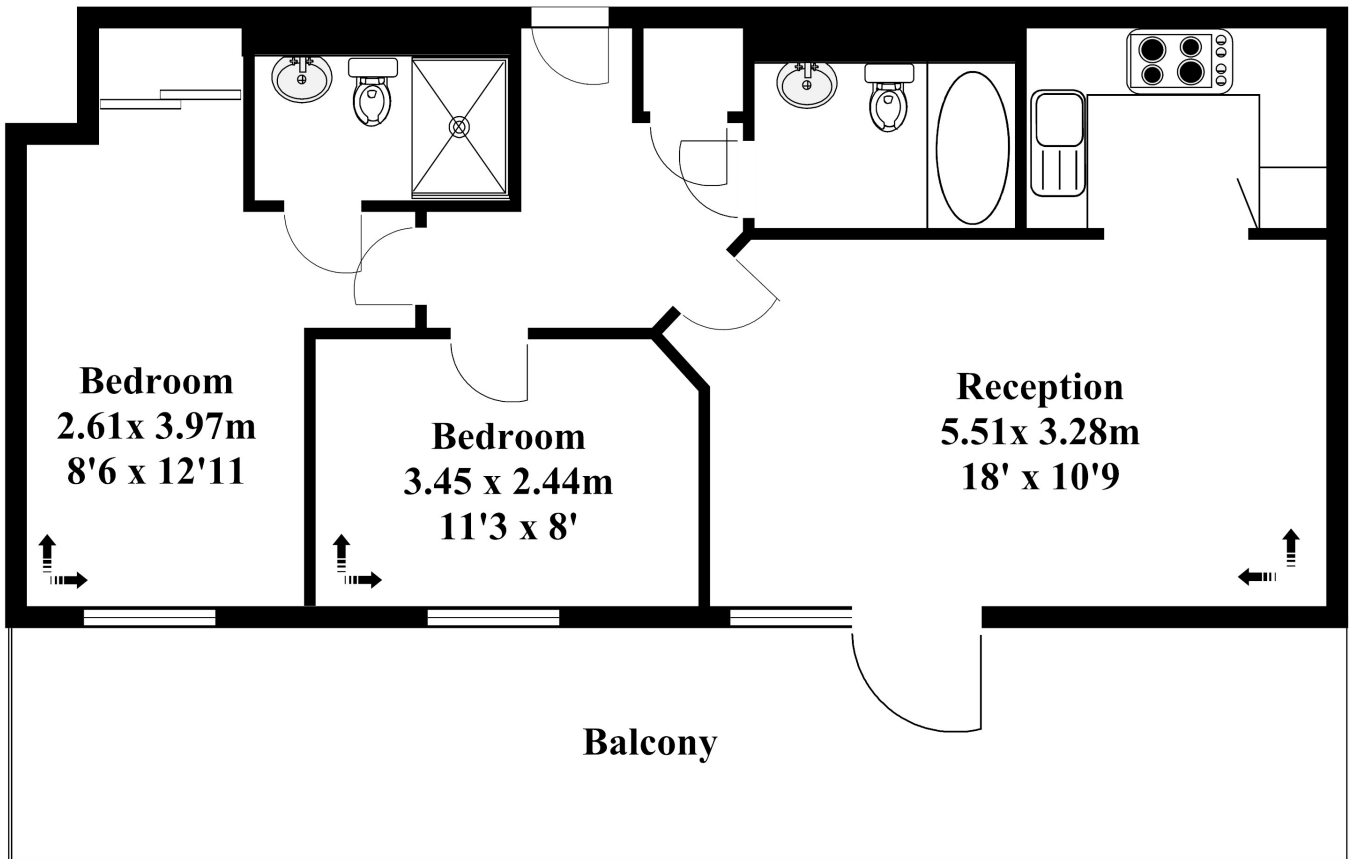
- Two Bedroom
- Two Bathroom
- Open Plan
- Wood Floors
- Private Balcony
- Great Location

**St Luke's Square
London
E16**



6th Floor

**Approx. Gross Internal Area = 60m square
= (649ft square)**



Plan produced by HP. Source.
For illustrative purposes only.
Not to scale.
Tel-07766340073

LiFE RESIDENTIAL

16 Royal Crest Avenue,
London, E16 2TQ
Sales: 020 3846 3332
Lettings: 020 3846 3311

Energy Rating: C. We aim to make our particulars both accurate and reliable. However they are not guaranteed; nor do they form part of an offer or contract. If you require clarification on any points then please contact us, especially if you're traveling some distance to view. Please note that appliances and heating systems have not been tested and therefore no warranties can be given as to their good working order.