



Flat First Floor 66 Gladstone Road

Watford, WD17 2RB

£1,250 Per Calendar Month

HOME SWEET HOME on Gladstone road! With serenity and charm all around, from the ceiling down to the ground, this delightful one bedroom abode is without question one of the best in the road. Offering convenience and location, a must have for every situation it is a sure bet this will be let soon! so do not delay call Signature Estates today!!

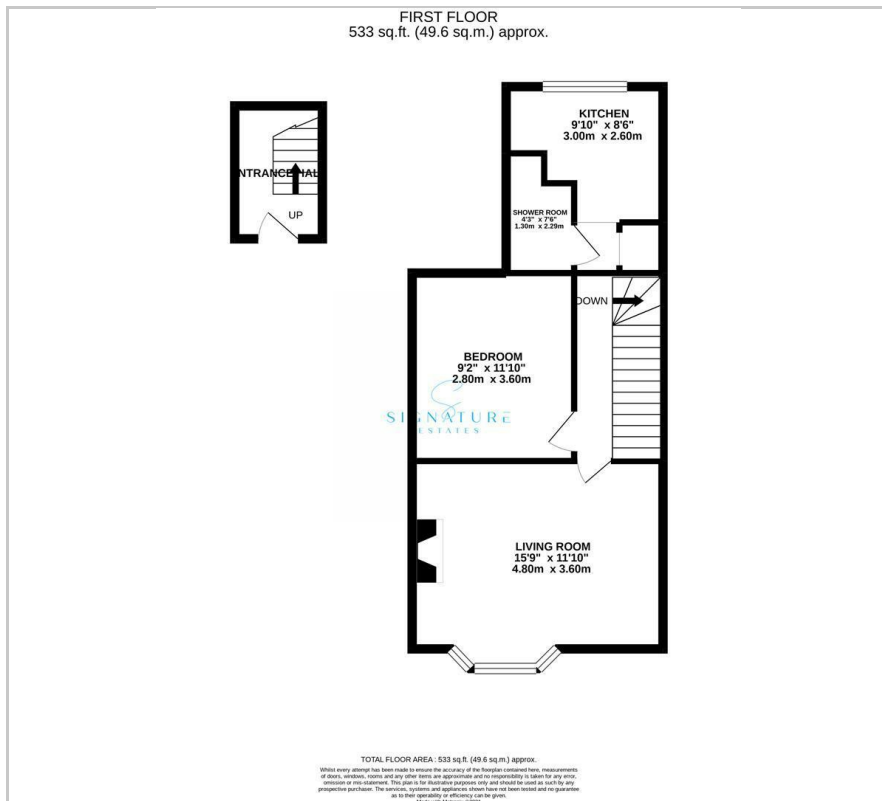
- One Bedroom Flat
- First Floor Flat
- Central Watford location
- Spacious living area
- Double Bedroom
- Available March
- Holding Deposit £265
- Council Tax band B

Viewing

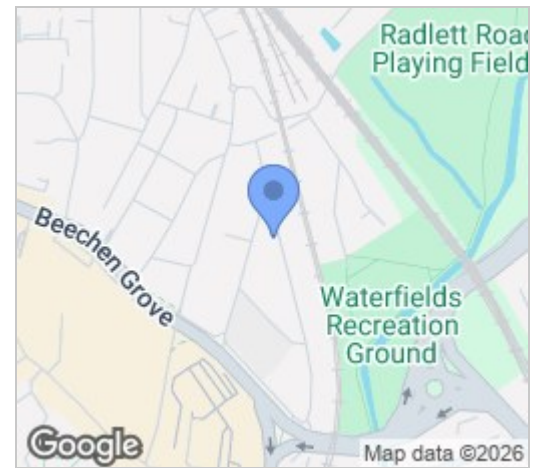
Please contact our Watford Office on 01923224030 if you wish to arrange a viewing appointment for this property or require further information.



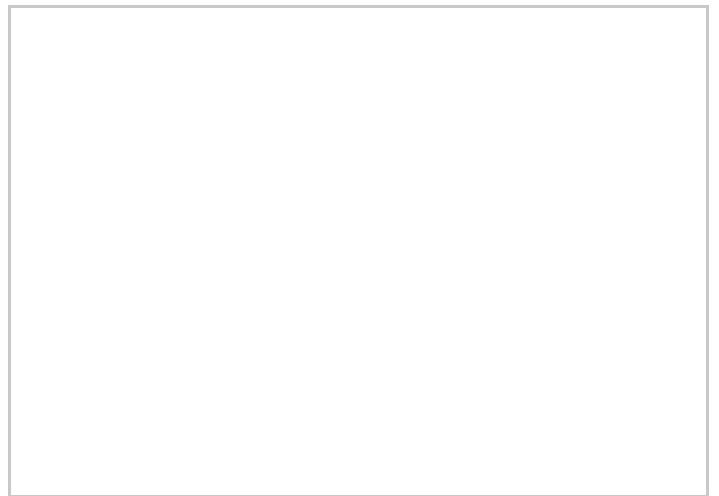
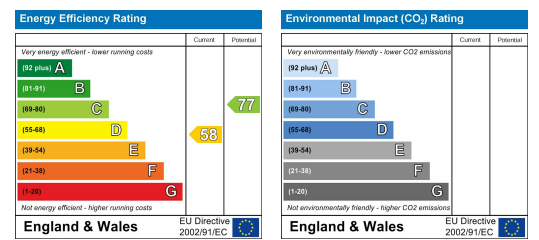
Floor Plan



Area Map



Energy Efficiency Graph



These particulars, whilst believed to be accurate are set out as a general outline only for guidance and do not constitute any part of an offer or contract. Intending purchasers should not rely on them as statements of representation of fact, but must satisfy themselves by inspection or otherwise as to their accuracy. No person in this firm's employment has the authority to make or give any representation or warranty in respect of the property.