



Price

£1,300 PCM

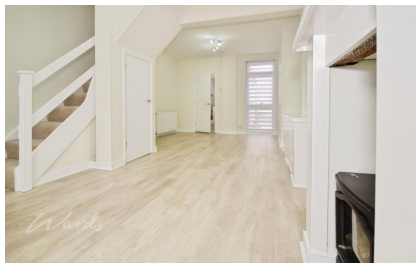
Fees Apply



Available 11/02/26

**Gardiner Street
Gillingham ME7 1DW**

Wards
Helping you move forwards



Main Features

Two Bedroom Terrace

Immaculate Condition Throughout

Garden

Walking Distance To Gillingham Train Station and Town Centre

Permit Parking

Unfurnished

Accommodation

Lounge/Diner 3.58 x 6.75

Kitchen 1.91 x 3.0

Bathroom 1.7 x 1.75

Bedroom 1 2.85 x 3.55

Bedroom 2 2.91 x 3.63

Bedroom 2 2.91 x 3.63



Deposit required is £1,500.00
Medway - Council Tax Band Tax Band B

Renting a property is a big commitment and we recommend that you visit the local authority website and these websites which offer helpful information and advice about letting

www.gov.uk/government/publications/how-to-rent

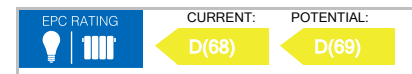
www.gov.uk/private-renting

www.wardsofkent.co.uk/renting/tenancy-fees-individuals/

www.gov.uk/green-deal-energy-saving-measures

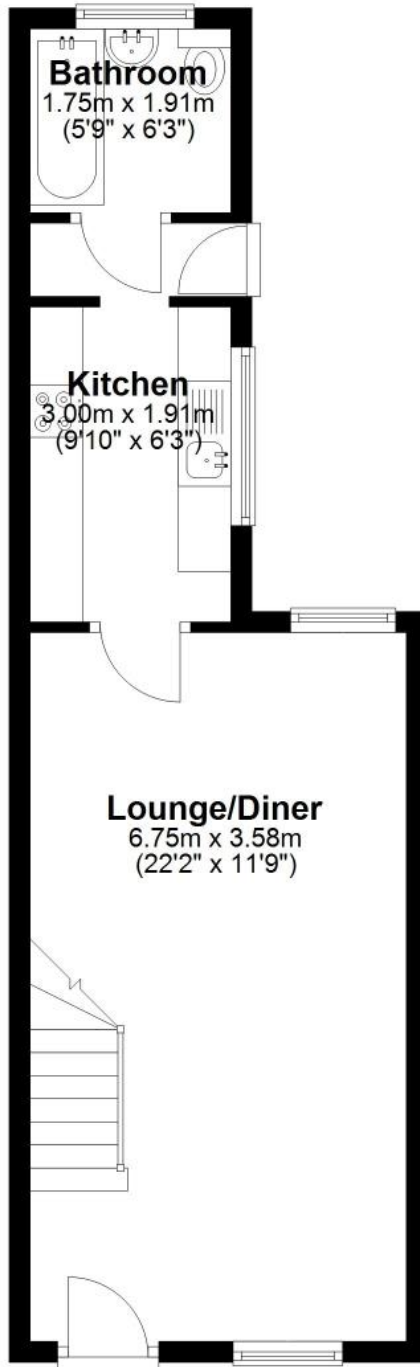
Call Medway 01634 714848 ■ wardsofkent.co.uk

IMPORTANT INFORMATION: Please contact our Lettings Team who will confirm the total costs involved in renting this property. For clarification, we wish to inform the prospective tenant that we have prepared these details as a general guide. The agent has not carried out a detailed survey nor tested the services, appliances, or specific fittings (unless otherwise stated), and no warranty can be given as to their condition. All room measurements are taken at floor level. We strongly recommend that all the information which we provide about the property is verified by yourself and your advisers. The contents of this publication are © Wards, 2015. Wards is a trading name of Arun Estates Limited Registered in England No. 2597969



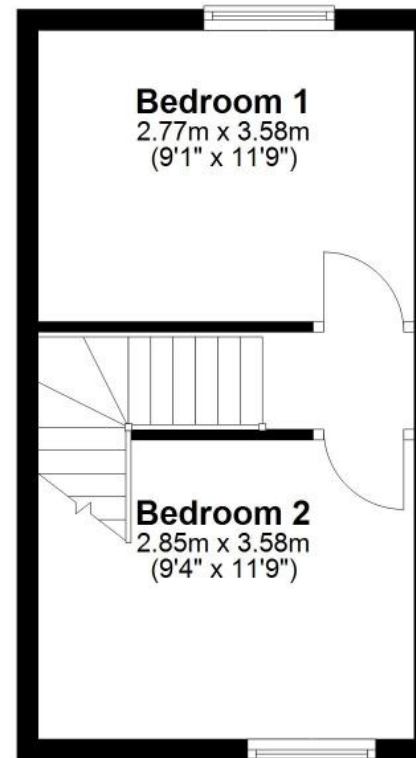
Ground Floor

Approx. 35.1 sq. metres (378.3 sq. feet)



First Floor

Approx. 24.2 sq. metres (260.1 sq. feet)



Total area: approx. 59.3 sq. metres (638.4 sq. feet)