



4 HAZELWOOD

Elmsett | Suffolk



Chapman Stickels

4 HAZELWOOD ELMSETT SUFFOLK, IP7 6QD

SHARED OWNERSHIP OPPORTUNITY - A TWO BEDROOM
SEMI-DETACHED HOME OCCUPYING A PEACEFUL RURAL SETTING

Hadleigh – 3 miles

Ipswich – 7 miles

Manningtree Station - 12 miles (London Liverpool Street Station in 56 minutes)

-
- Entrance hall • Sitting room • Kitchen / dining room • Two double bedrooms •
 - Family bathroom • Garden • Off-road parking • Store •





SHARED OWNERSHIP - £184,000 FOR A 80% SHARE. **Eligibility terms apply. Leasehold property.

Regular monthly payments are required as follows:

Rent: £110.14
Service charge: £32.48
Buildings insurance: £37.59
Admin fee: £9.46

The Property

Situated in the picturesque Suffolk village of Elmsett, 4 Hazelwood is a well presented, comfortable home. Forming part of a small cul-de-sac surrounded by countryside on the edge of the village, the house is approached by a garden path to the front door with a useful store to one side. The welcoming entrance hall provides access to the sitting room and the kitchen/dining room. The kitchen is well equipped with base and eye level units combined with wood effect worktops providing space for cooker, washing machine and fridge freezer. Wooden flooring runs throughout all the downstairs accommodation, and there are two useful storage cupboards on both sides of the hall.

On the first floor a landing area leads to two double bedrooms, the family bathroom, and loft space above.

To the rear of the house lies a good sized, fully enclosed garden with a raised decking area and a side gate provides access on to the drive.

Location

Elmsett is a popular village about 5 miles from the thriving market town of Hadleigh and 9 miles from Ipswich. The village itself offers a Post Office/Village Stores, public house, primary school, and village hall.

Services

We understand all mains services are connected.

Local Authority & Council Tax Band
Babergh District Council
Band B 2026

EPC Rating

Current D (60). Potential B (85).

4 Hazelwood, Elmsett, IP7 6QD

Approximate Floor Area

Main House - 708 sq. ft / 65.77 sq. m

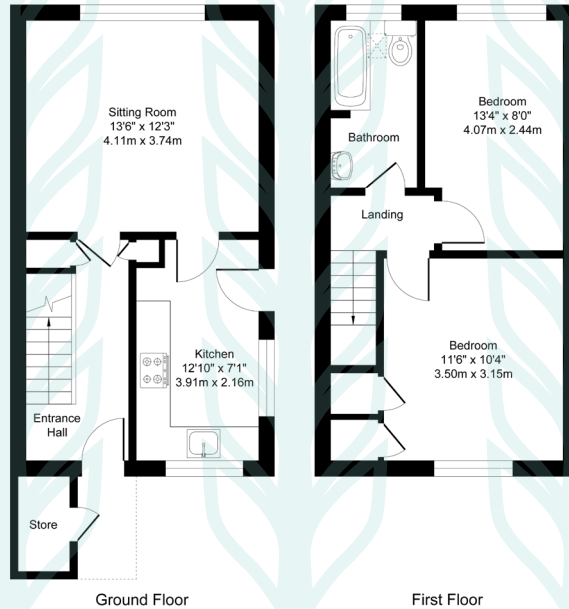


Illustration for identification purposes only, measurements approximate, not to scale. Copyright



Chapman Stickels

The Corn Exchange,
Market Place,
Hadleigh,
Suffolk,
IP7 5DN

info@chapmanstickels.co.uk
www.chapmanstickels.co.uk

01473 372 372

All enquiries:

Benedict Stickels
ben@chapmanstickels.co.uk

Cleo Shiel
cleo@chapmanstickels.co.uk



Scan the QR code to visit our website



rightmove

PrimeLocation.com

onTheMarket.com

Zoopla



IMPORTANT NOTICE
Chapman Stickels states these particulars are for general information only and do not constitute an offer or contract or part thereof. All descriptions, photographs and plans are for guidance only and should not be relied upon as statements or representations of fact. All measurements are approximate where stated. Any prospective purchaser must satisfy themselves of the accuracy of the information within these particulars by inspection or otherwise. Chapman Stickels does not have any authority to give any representations or warranties whatsoever in relation to this property (including but not limited to planning/building restrictions), nor can it enter into any contract on behalf of the client. We do not accept responsibility for any expenses incurred by prospective purchasers in inspecting properties which have been sold, let or withdrawn. If there is anything of particular importance to you, please contact us where we will endeavour to have any information or queries checked.