



Coombe Road, KT2

£360,000

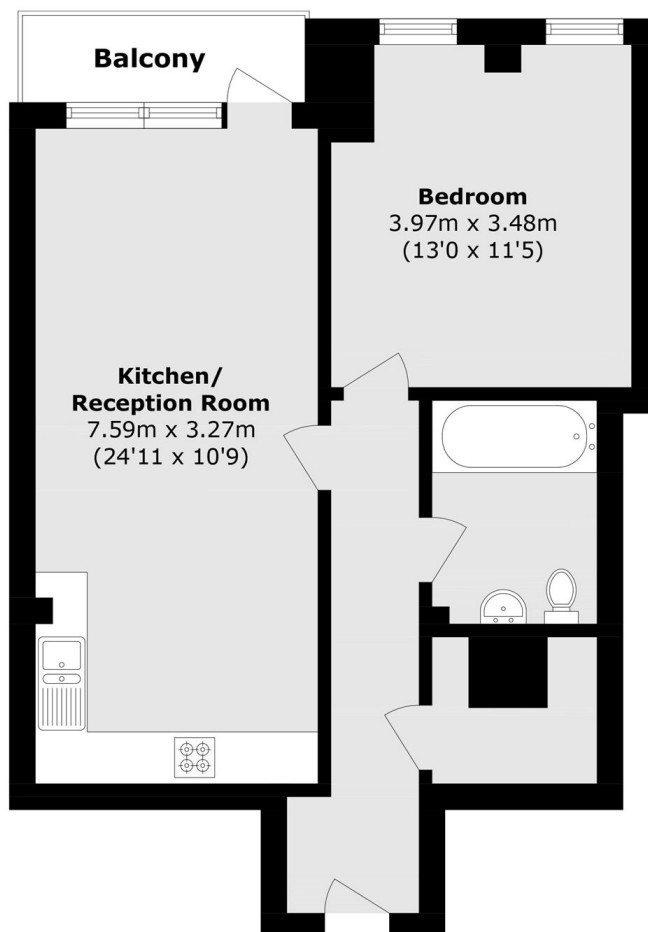
This stylish one bedroom apartment is set on the first floor of this sought after, small and contemporary development. Beautifully presented throughout and ideally located for an array of local amenities, it would be superb choice for those looking to take their next step on the property ladder or expand their portfolio.

Fallow Court, Coombe Road is centrally situated within Kingston Upon Thames and is ideally positioned for Richmond Park, the River Thames, Norbiton Mainline Train Station and the areas extensive shopping and leisure amenities, including both High Street and artisan shops, independent coffee shops and fabulous bars and restaurants.

Features

- One Double Bedroom
- Large Open Plan Living Room
- Bright and Spacious
- Smart Modern Kitchen
- Great Location
- Private Balcony

Coombe Road, Kingston Upon Thames, KT2



Total area (approx): 56.2 sq. m (604.9 sq. ft)
Balcony area (approx): 3.3 sq. m (35.5 sq. ft)