



Millington Lodge Lodge Road, Telford, TF2 7QL

Price £665,000

Millington Lodge offers a unique family home set within approximately three acres of paddocks & woodland. The house is located close to Lilleshall & with expansive views over the Shropshire countryside. This property has an 'upside-down' living arrangement with generous sized rooms and huge potential. Please note it is subject to an Agricultural Occupancy Condition.

Reception Hall

Entering through the front porch, this large entrance hall provides access to all ground-floor bedrooms and bathrooms, along with two storage cupboards, a lift and side porch and garage. The grand central staircase rises to the first floor.

Bedroom One (front right)

A front-facing double bedroom with a large window overlooking the front of the property and views beyond. Completed with an ensuite shower room.

Bedroom Two (rear right)

To the rear of the property, a mirror-image second double bedroom with an ensuite shower room. The dual-aspect windows give views out over the vast countryside and to Lilleshall Monument.

Bedroom Three (rear central)

A single bedroom currently serving as a dressing room, with views over the rear paddock and offering flexible living options such as use as a study, nursery or fifth bedroom.

Bedroom Four (rear left)

Another good-sized double bedroom to the rear of the property, with a large window allowing in plenty of natural light.

Bedroom Five (front left)

The final double bedroom, again a great size with lovely views over the front of the property and fields beyond.

Family Bathroom

A very generous family bathroom, comprising a white suite of WC, pedestal basin and fitted bathtub with overhead shower.

Landing

Approached from the large wooden staircase, the landing offers a central hub for the first-floor and links all rooms to create a flow to the living space. Housing also a WC and pantry cupboard with access to the loft space.

Kitchen Breakfast Room

This generous kitchen offers an inviting space perfectly suited to everyday family living and entertaining. Fitted with a range of warm wood-effect wall and base units, the kitchen provides ample storage and extensive worktop space, complemented by integrated cooking appliances and room for additional freestanding appliances. Large dual-aspect windows flood the room with natural light while offering pleasant views over the surrounding gardens, creating a bright and welcoming atmosphere throughout the day.

Family/Dining Area

Flowing seamlessly from the kitchen and designed in an L-shape, the family area offers a suitable

space for a snug or dining area. Featuring a fitted log burner and windows overlooking the views towards Lilleshall.

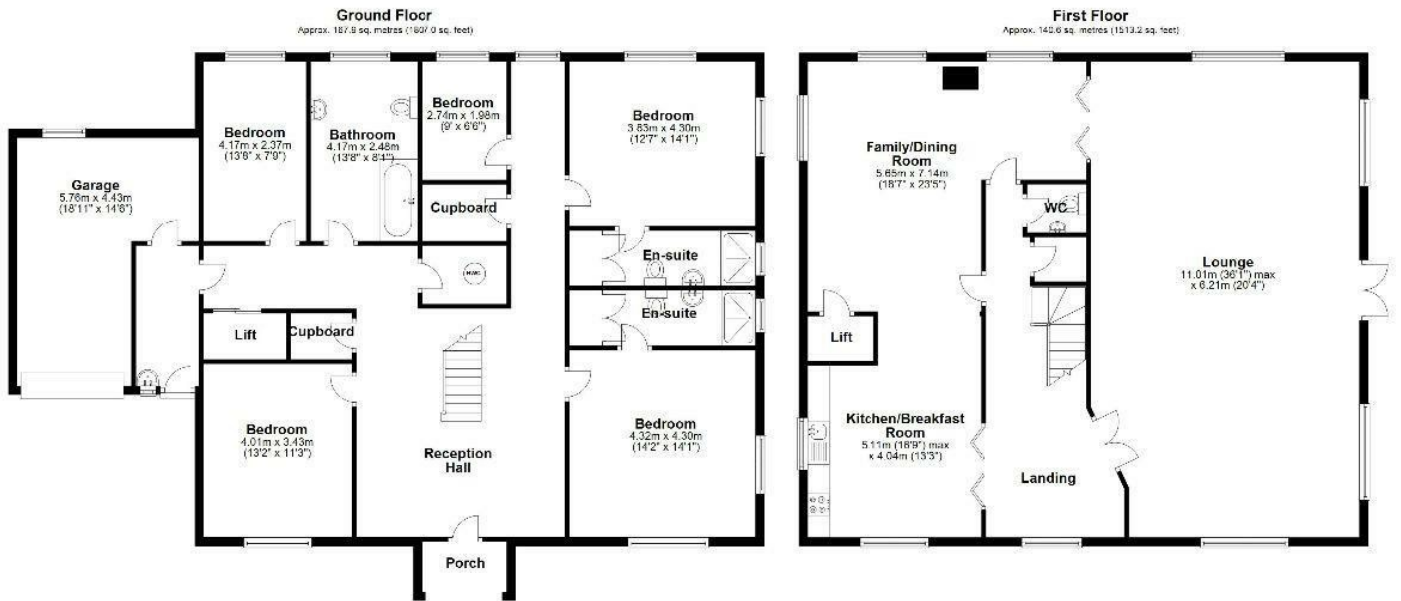
Lounge

A vast, bright and airy living room with views out towards all angles of the property. This generous lounge offers huge versatility as a living room, playroom, entertaining area or bedrooms should you choose to. Leading off the French doors is a wooden bridge giving access to the outdoor woodland.

Outside

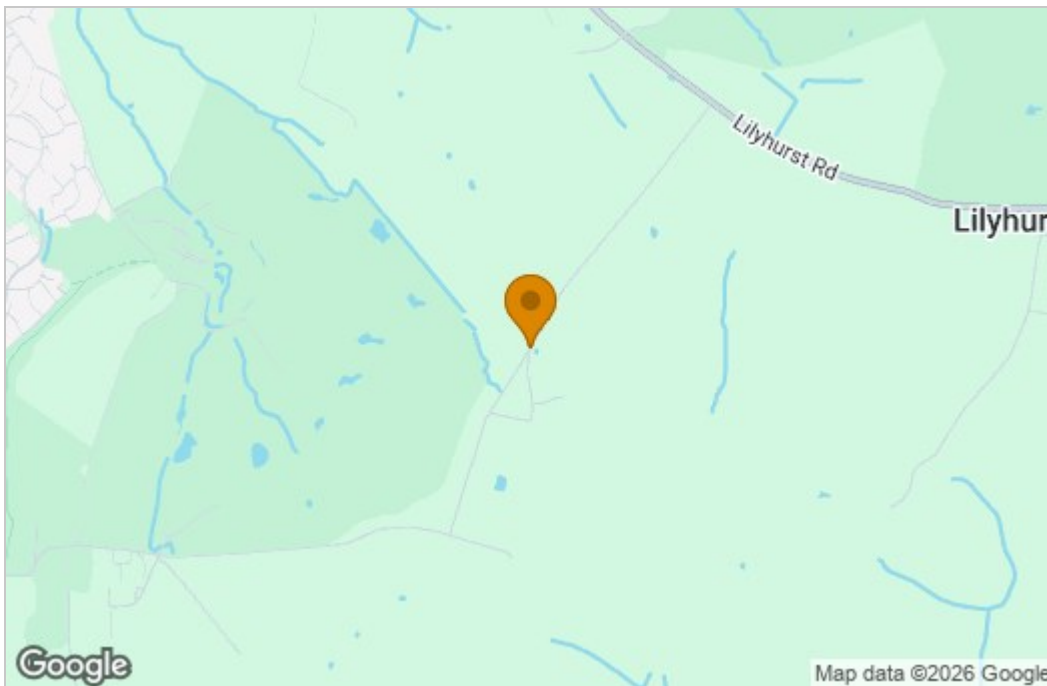
The property is approached up a sweeping driveway that gives way to a large front parking area. The front of the property features a lawned area, a large, planted border and access to one of the outbuildings that would serve nicely as a workshop or further storage space. Over the back of the property a paddock expands down the length of the driveway and borders the woodland. Within the wooded area you'll find a small quarry and pond, a further shed and children's play area.

Floor Plan

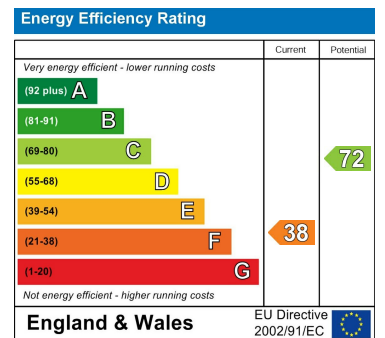


Total area: approx. 308.5 sq. metres (3320.2 sq. feet)

Area Map



Energy Efficiency Graph



These particulars, whilst believed to be accurate are set out as a general outline only for guidance and do not constitute any part of an offer or contract. Intending purchasers should not rely on them as statements of representation of fact, but must satisfy themselves by inspection or otherwise as to their accuracy. No person in this firm's employment has the authority to make or give any representation or warranty in respect of the property.