



## Kensington Court, W8

£2,375 Per calendar month

A lovely one bedroom apartment on the ground floor of a traditional residential building. Being only a few minutes walk from the Palace Gate entrance to Kensington Gardens, the home is in an ideal location, just tucked away behind the high street. The property has wooden floors in the hallway and living space, with plenty of built in storage in the bedroom, plus additional storage for larger items in the hallway cupboard.

The property is situated just off Kensington High Street, only moments from popular high street stores including Whole Foods market and other amenities such as the Equinox Fitness club.

### Features

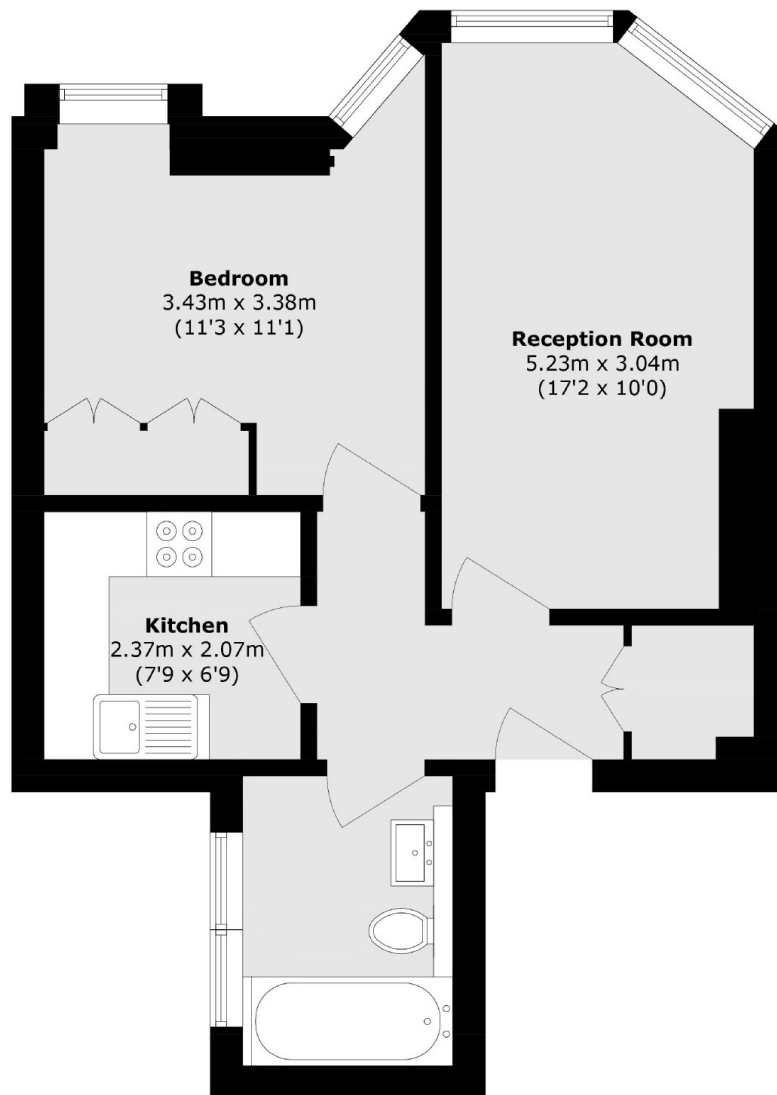
- One Bedroom
- Separate Kitchen
- Heating and Hot water Included
- Ground Floor
- Furnished
- High Street Kensington Tube



Kensington Court, W8



# Kensington Court, London, W8



Total area (approx.): 45.1 sq. m (484.4 sq. ft)